



Doncaster
Council

Report

Learning Provision Organisation: Key Data Report Armthorpe Pyramid

Autumn 2018 Release

Analysis of school and childcare provision within the Armthorpe pyramid.

Contents

1. Executive Summary.....	4
1a. Demographic.....	4
1b. Schools.....	4
1c. Childcare and Early Years.....	5
1d. SEND.....	5
1e. Key Points.....	5
2. The Pyramid in Context.....	6
2a. Overview.....	6
2b. Demographics and Population.....	6
2c. Pyramid Profile.....	7
2d. Ethnicity and Migration.....	8
2e. Indices of Multiple Deprivation (IMD) Overview.....	9
2f. Working Tax Credits.....	9
2g. Free School Meals (FSM).....	9
2h. Birth Trends.....	10
2i. Social Care Referrals.....	11
3. Structure of Learning Provision.....	12
3a. Locality of Provision.....	13
3b. Academy Conversions.....	14
3c. Social Mobility.....	15
3d. English as Other Language (EAL).....	16
3e. Admissions.....	17
3f. Pupil Absence.....	18
3g. Exclusions.....	19
4. Pupil Place Planning.....	20
4a. Housing Growth and S106 Contributions.....	20
5. Schools Capacity (SCAP).....	23
5a. Primary School Projections.....	23
5b. Primary Summary.....	24
5c. Secondary School Projections.....	25
5d. Contributing Factors.....	25
5e. Childcare Places & Availability.....	27
5f. Childcare Projections.....	31
5g. Capital Projects.....	32
5h. SEND Provision.....	33

5i. Childcare Costs.....	35
6. Early Education Funding.....	36
6a. 2 Year Old Early Education	36
6b. 3 and 4 Year Old Early Education (Universal)	37
6c. 30 Hours Free Childcare for Eligible 3 and 4 Year Olds	37
6d. Future Plans	40
7. Parent Feedback	41

1. Executive Summary

1a. Demographic

The Armthorpe pyramid is located in the east area of Doncaster and consists of 7% of the Doncaster population.

Within this pyramid 88% of the children are white british, the other 12% are made up of other nationalities, the largest being polish.

In 2010 the Armthorpe Pyramid had an IMD of 36.31% and was the 12th most deprived area in Doncaster, 2015 data shows that the Armthorpe IMD has increased to 42.7% however it remains the 12th most deprived area in Doncaster. The Armthorpe pyramid is consistently higher than the Doncaster average.

Birth rates for Armthorpe have started to slowly rise in this past year.

Within Armthorpe 11% of primary pupils and 7% secondary pupils are EAL, the most common first language other than English locally is Polish.

50% of primary children in Armthorpe access school places outside of their catchment school, 8% of these were out of pyramid.

51% of secondary children access outside of their catchment school, of which 36% access faith schools.

There are a number of large scale housing developments coming to the Armthorpe area over the next few years totalling to around 732 dwellings.

1b. Schools

The Armthorpe pyramid consists of a range of learning provision types from both the school / academy and PVI sector offering a mix of flexible provision.

There are five schools in Armthorpe, all of which have converted to academy status.

There is a program of capital and S106 investment in Doncaster. Within this pyramid three of the five schools have accessed funding.

Pupil absence in the pyramid has dropped year on year however there has been a steady increase for secondary.

School projections for the next five years show an emerging shortfall of primary places. Secondary provision shows no shortfalls within Armthorpe, however neighbouring Hungerhill School has some forecast shortfalls, future projections show the number of surplus places in Armthorpe is sufficient to offer places across the two pyramids.

1c. Childcare and Early Years

Childcare places are based on summer terms as this shows the highest occupancy throughout the year. In Summer 2018 there were vacant places in all provision types. There are no provisions available after 6pm however one provision does provide care for shift patterns.

Childcare costs within Armthorpe are roughly in line with the Doncaster average however Childminders and Full Daycare costs are lower than the Doncaster and Yorkshire and Humber averages.

The take up of 2 year old early education funding boroughwide was 80% in Autumn 2017, 75% in Spring 2018 and 80% in Summer 2018.

The take up of the 3 and 4 year old universal provision boroughwide was 92% in Autumn 2017, 98% in Spring 2018 and 98% in Summer 2018.

The take up of the 30 hours extended entitlement boroughwide was 78% in Autumn 2017, 79% in Spring 2018 and 76% in Summer 2018.

There are no identified concerns from families in the Armthorpe area highlighting shortfalls in provision.

1d. SEND

There is no specific SEND provision in Armthorpe, however all provisions have to meet the requirements of the SEN Code of Practice and Disability Discrimination Act requirements.

1e. Key Points

There is an expected influx of families to the Armthorpe area over the coming years due to the large number of housing developments. This will impact on place provision both in the school / academy and PVI sector.

2. The Pyramid in Context

2a. Overview

The data within this report aims to provide an overview of the Armthorpe pyramid, the available learning provision within the pyramid and identify any pressures or shortfalls which will form part of the borough wide Learning Provision Organisation Strategy.

The first section gives an overview of the dynamics of the area and then moves onto analysis of pupil place provision.

2b. Demographics and Population

Doncaster is an ambitious borough and very few places in the UK come close to us in terms of delivering major projects over the last 10 years. These projects are world class and have changed Doncaster considerably, with several more multi-million pound developments already underway and in the pipeline.

Other Doncaster landmark developments include:

- The Great Yorkshire Way Project (FARRS)
- iPort
- Aero Centre, Yorkshire
- Project Unity (DN7)
- National Rail College
- Institute of Technology
- PGA European Tour Development at Rossington Hall
- Doncaster Corn Exchange Restoration
- Bader School
- DUTC
- Big Picture Learning

The Urban Centre Master plan including; City Gateway, Enterprise Market Place, Waterfront, Minster Canalside, Civic/Business District, Parklands, Retail Core, Innovation Quarter, Waterfront Phase 2.

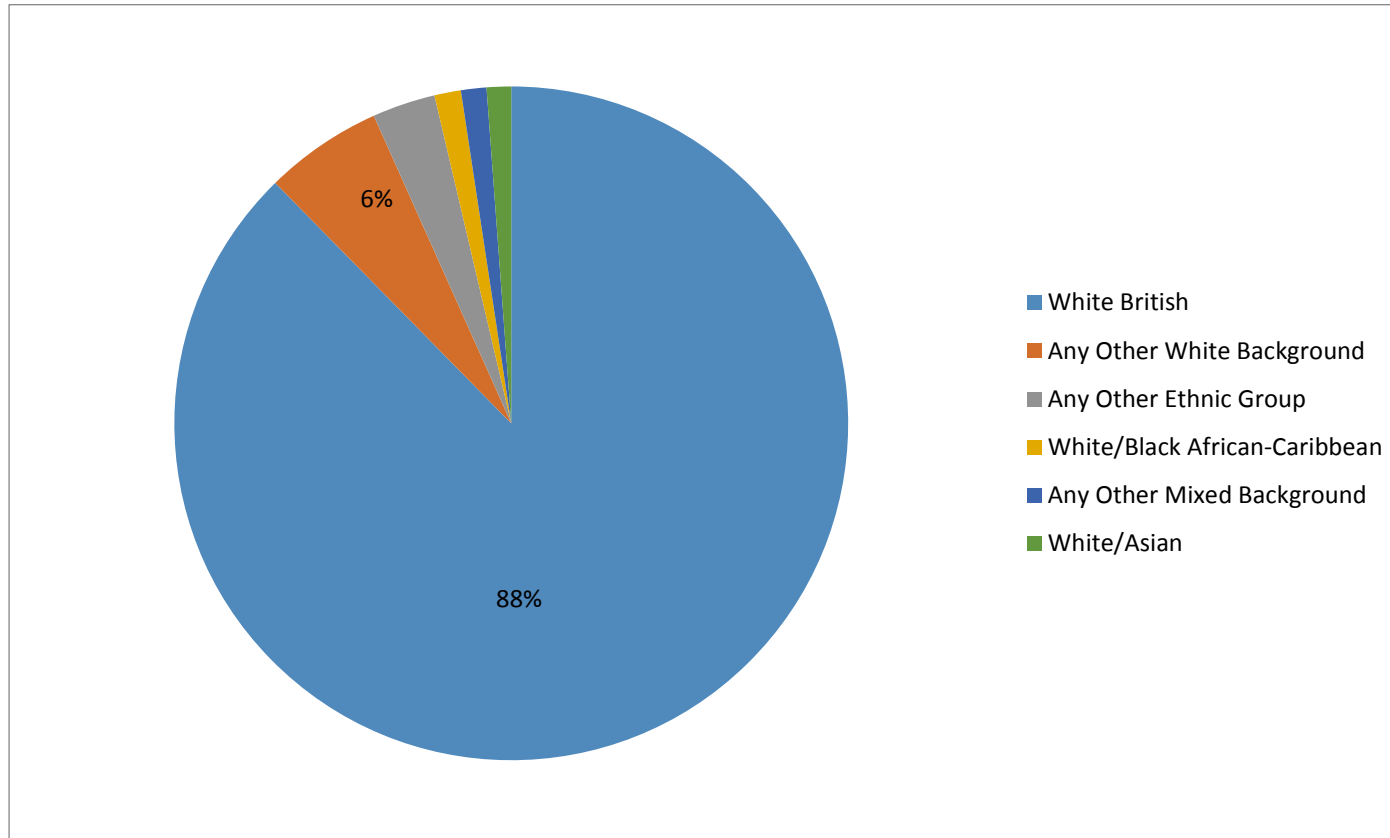
2c. Pyramid Profile

Today, on average Armthorpe remains one of the more affluent areas of Doncaster. Armthorpe is an area defined within the Doncaster East Neighbourhood Management area and is accessed by Armthorpe Road to the east of Doncaster town centre and the A630 from M18 junction 4.

The village once had a thriving mining community but since the closure of the pits and related industries the village has expanded and become a substantial residential area. Armthorpe has a thriving local community with an abundance of shops and amenities such as supermarkets, small shops, doctors, dentist and a library. There are large commercial and industrial estates that are located next to the M18 Motorway operated by Global distribution players such as IKEA , Fellowes and Next (Clothing).

2d. Ethnicity and Migration

This data shows the breakdown of significant ethnicities of the children within the Armthorpe Pyramid, 88% of the children are White British. The main nationality of any other white background is Polish.



*Source: School Census Spring 2017

2e. Indices of Multiple Deprivation (IMD) Overview

This data shows a comparison between the 2015 IMD and the 2010 IMD. The data shows that Armthorpe remains above the Doncaster average and the IMD has increased by 6.39% since 2010.

2015 IMD			2010 IMD		
Pyramid	2015	(1 most deprived, 16 least deprived)	Pyramid	2010	(1 most deprived, 16 least deprived)
Armthorpe Pyramid	42.70%	12	Armthorpe Pyramid	36.31%	12
Doncaster Average	35.40%	-	Doncaster Average	33.56%	-

* Source: 2015 Indices of Multiple Deprivation <https://www.gov.uk/government/collections/english-indices-of-deprivation>

2f. Working Tax Credits

The table below shows the percentage take up of the Childcare Element of Working Tax Credits. The take up in this pyramid is higher than the Doncaster and National averages.

School Pyramid Area	2013 - 2014 Tax Year
Armthorpe Pyramid	17.51%
Doncaster Average	14.74%
National Average	14.30%

2g. Free School Meals (FSM)

The table below show the number of children accessing Free School Meals within the pyramid. Data shows that Armthorpe has a lower level of FSM take up than the Doncaster average.

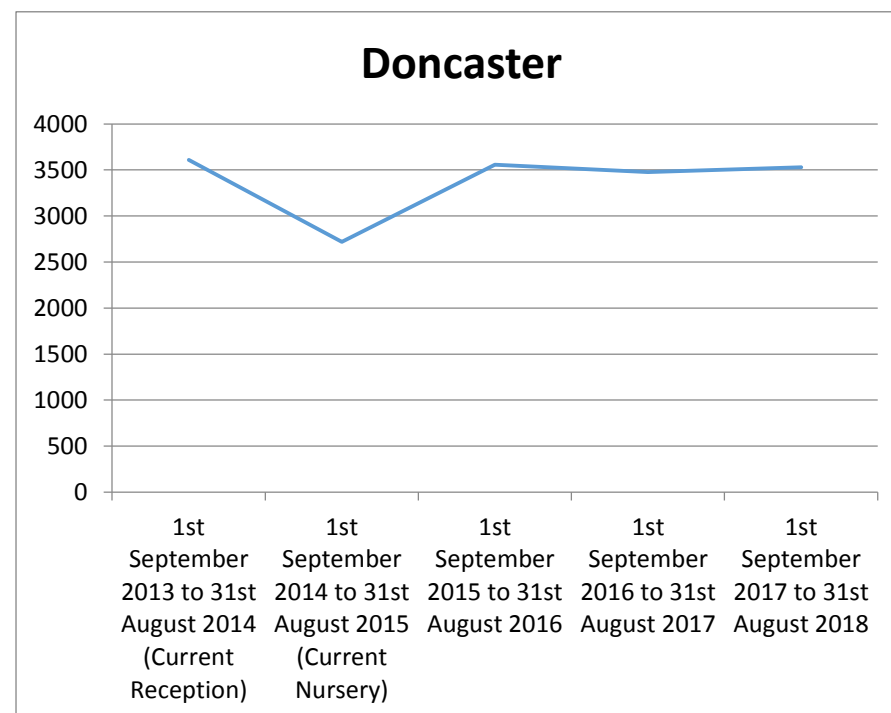
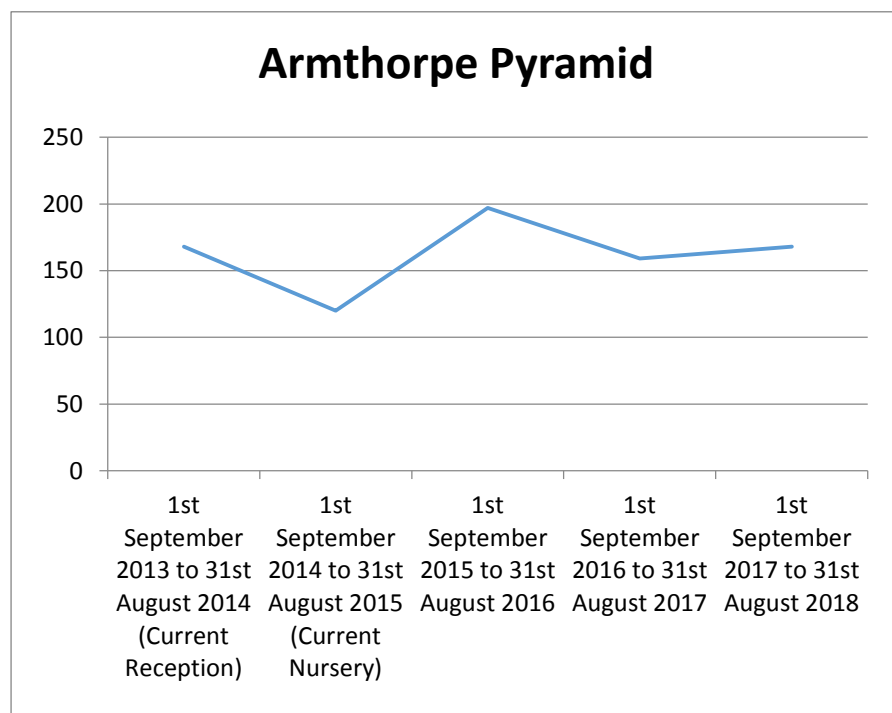
School Pyramid Area	% FSM
Armthorpe Pyramid	11%
Non-geographic*	17%
Doncaster Average	16%

* Non-geographic includes all special schools and PRUs, plus McAuley and XP secondary schools

2h. Birth Trends

Baseline data for pupil place planning is based on health data. This data identifies children's residency at time of birth, and is widely accepted as the most accurate dataset of children residing within the borough. The data shows the birth trends for children residing in Armthorpe at birth against the borough wide trends.

Pyramid	1st September 2013 to 31st August 2014 (Current Reception)	1st September 2014 to 31st August 2015 (Current Nursery)	1st September 2015 to 31st August 2016	1st September 2016 to 31st August 2017	1st September 2017 to 31st August 2018
Armthorpe Pyramid	168	120	197	159	168
Doncaster	3610	2719	3557	3478	3529



2i. Social Care Referrals

The data below shows the number of children who are subject to a Social Care Referral and the category they fall in to.

January 2018	Children in Care	Children in Need	Child Protection	February 2018	Children in Care	Children in Need	Child Protection
Armthorpe Pyramid	34	84	18	Armthorpe Pyramid	36	85	19
% of Borough wide Total	10%	4%	5%	% of Borough Wide Total	10%	5%	5%
Doncaster Total	348	1878	371	Doncaster Total	343	1840	393

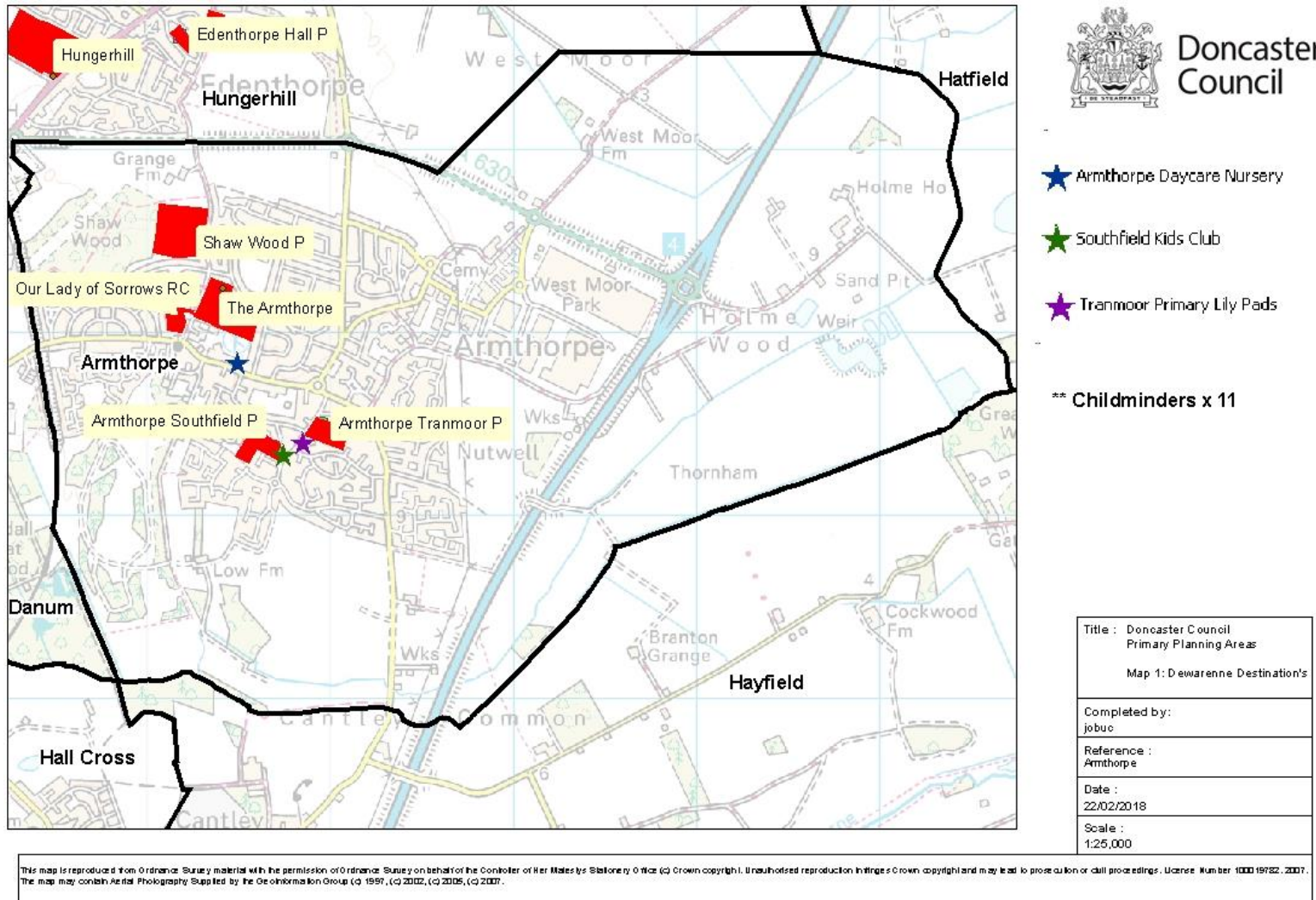
3. Structure of Learning Provision

The following pages set out the context of the local provision within the Armthorpe pyramid. Below is a table showing all the provision by type.

Secondary School	Armthorpe Academy
Infant Schools	None
Junior Schools	None
Primary Schools	Southfield Primary School Tranmoor Primary School Armthorpe Shaw Wood Primary Our Lady of Sorrows Catholic Voluntary Academy
Special Schools	None
Alternative Provision (PRU's)	None
School Nurseries	Southfield Primary School Tranmoor Primary School Shaw Wood Academy
Full Daycare Provider (PVI Sector Nurseries)	Armthorpe Day Nursery
Sessional Care Providers (Pre-School Playgroups)	None
Out of School Provision (Breakfast Clubs, After School Care and Holiday Schemes)	Southfield Primary School Tranmoor Primary School Shaw Wood Academy Our Lady of Sorrows Catholic Voluntary Academy Armthorpe Day Nursery Southfields Kids Club
Childminders	13 Childminders

3a. Locality of Provision

To help to visualise the local provision the map below shows the geographical location of each provision from the School / Academy and PVI Sector. The exception is that childminders are not plotted. Although they work to the same Ofsted standards as all childcare provision they operate from their home address and therefore are summarised within the key. The pyramid is 5.3 square miles in size.



3b. Academy Conversions

There has been a drive in recent years for schools to convert to academy status. Academies are independent, state-funded schools, which receive their funding directly from central government, rather than through the local authority.

In Doncaster 54% of schools have converted to academies. This includes all of our secondary schools.

In Armthorpe all schools have converted to academies.

Maintained Schools	Academies
N/A	Armthorpe Shaw Wood Primary
	Tranmoor Primary School
	Southfield Primary School
	Armthorpe Academy
	Our Lady of Sorrows

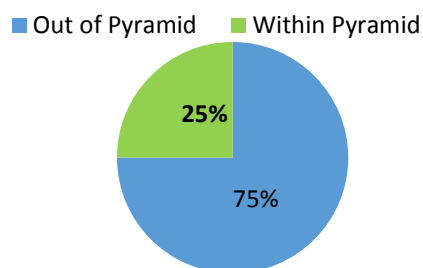
3c. Social Mobility

The data below shows the most common moves out of Pyramid schools and their destination school outside of the usual leaving point over a 2 year period for academic years 2015/16 and 2016/17.

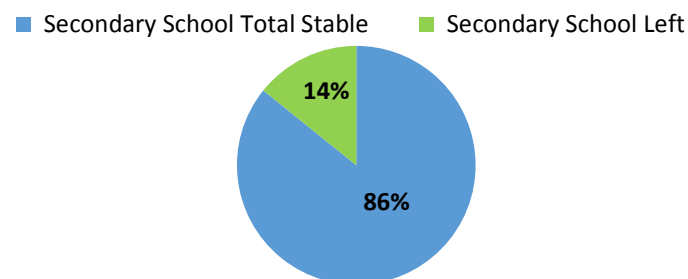
School Name	Stable Places	Joined In Year	Left In Year	1 st Most Common Destination	2 nd Most Common Destination	3 rd Most Common Destination
Southfield Primary	292	41	28	Our Lady of Sorrows (4)	Hayfield Lane Primary (4)	Sandringham Primary (2)
Tranmoor Primary	487	73	35	Sandringham Primary (6)	Mexborough Montagu (3)	Bessacarr Primary (2)
Shaw Wood Primary	480	83	40	Our Lady of Sorrows (4)	Rossington St. Michaels (3)	Windhill Primary (3)
Our Lady of Sorrows	156	35	10	Willow Primary School (2)	Southfield Primary (1)	Kirkby Avenue (1)
Armthorpe Academy	589	62	117	Danum Academy (14)	McAuley (8)	Hall Cross Academy (7)
Pyramid Total	2004	294	230			
Doncaster Total	47,157	7517	7248			

* Any schools denoted with an Asterisk identify where a pupil has moved from a Doncaster school to an out of area school then returned to their original Doncaster school.

Primary Movement Within or Outside of Pyramid



Mobility Vs. Stable Secondary Pupils



This gives an overview of locality of leavers Destination Schools within Primary Schools and leavers vs non leavers within the Secondary School.

3d. English as Other Language (EAL)

Within the Armthorpe pyramid 11% of the primary pupils and 7% of the secondary pupils are EAL. The Doncaster total shows that 11% of primary pupils and 8% of secondary pupils are EAL, therefore Armthorpe is roughly in line with the boroughwide average.

The data below shows most common first languages (other than English) within this pyramid compared to boroughwide:

Primary			
Armthorpe Pyramid		Boroughwide	
Polish	135	Polish	1133
Russian	4	Romanian	221
Turkish	4	Urdu	195
Romanian	3	Kurdish	167
Latvian	2	Slovakian	158

Secondary			
Armthorpe Pyramid		Boroughwide	
Polish	18	Polish	366
Bulgarian	4	Slovakian	108
Romanian	3	Romanian	89
Czech	2	Urdu	87
Nepali	2	Punjabi	75

The local authority delivers support bilingual classroom support to none of the pyramid schools.

School	EMTAS Support	Languages Supported
Southfield Primary	No	N/A
Tranmoor Primary	No	N/A
Shaw Wood Academy	No	N/A
Our Lady of Sorrows	No	N/A
Armthorpe Academy	Partial	Annual support with First language exams

3e. Admissions

The data below shows the non-catchment children on role and their identified catchment school.

Primary (Spring Census 2018)

School	% Attending from out of Catchment	Catchment School	Catchment School	Catchment School	Catchment School	Catchment School
Armthorpe Tranmoor Primary	56%	Shaw Wood Academy (132)	Borderline (41)	Southfield Primary (21)	Hatchell Wood Primary (6)	Kingfisher Primary (5)
Our Lady of Sorrows	0%	VA Schools are boroughwide and do not have an allocated catchment area				
Shaw Wood Academy	31%	Borderline (43)	Tranmoor Primary (30)	Southfield Primary (7)	Park Primary (6)	Plover Primary (6)
Southfield Primary	71%	Shaw Wood Academy (55)	Tranmoor Primary (54)	Borderline (45)	Hatchell Wood Primary (4)	Edenthorpe Hall Primary (3)

Secondary (Spring Census 2018)

Catchment School	% Attending from out of Catchment	Catchment School	Catchment School	Catchment School	Catchment School	Catchment School
Armthorpe Academy	14%	Outwood Academy Danum (32)	Hall Cross Academy (9)	Balby Carr Academy (6)	Ash Hill Academy (6)	Hungerhill School (6)

3f. Pupil Absence

The table below shows a 5 year trend for authorised and unauthorised absences by Primary and Secondary

Primary															
	2016/17			2015/16			2014/15			2013/14			2012/13		
	Auth	Unauth	Total	Auth	Unauth	Total	Auth	Unauth	Total	Auth	Unauth	Total	Auth	Unauth	Total
Southfield Primary	2.0%	1.3%	3.3%	2.5%	1.3%	3.9%	3.0%	0.9%	3.9%	3.4%	0.8%	4.2%	3.8%	0.7%	4.6%
Tranmoor Primary	3.1%	1.3%	4.4%	3.1%	0.9%	4.0%	2.8%	0.9%	3.7%	2.4%	0.9%	3.3%	3.7%	1.5%	5.2%
Shaw Wood Academy	2.4%	1.2%	3.6%	2.4%	1.1%	3.4%	3.0%	1.7%	4.6%	3.1%	1.9%	4.9%	3.3%	2.0%	5.3%
Our Lady of Sorrows	3.0%	1.1%	4.1%	2.9%	0.5%	3.4%	2.9%	0.7%	3.6%	3.1%	0.4%	3.5%	4.7%	0.7%	5.4%
Armthorpe	2.6%	1.3%	3.8%	2.7%	1.0%	3.7%	2.9%	1.2%	4.1%	2.9%	1.2%	4.1%	3.7%	1.4%	5.2%
Doncaster	3.0%	1.2%	4.2%	3.0%	1.1%	4.1%	3.0%	1.1%	4.1%	3.1%	0.9%	4.0%	4.2%	1.0%	5.1%
National	3.1%	0.9%	4.0%	3.2%	0.8%	3.9%	3.3%	0.7%	4.0%	3.2%	0.7%	3.9%	4.1%	0.7%	4.8%

Secondary															
	2016/17			2015/16			2014/15			2013/14			2012/13		
	Auth	Unauth	Total	Auth	Unauth	Total	Auth	Unauth	Total	Auth	Unauth	Total	Auth	Unauth	Total
Armthorpe Academy	3.3%	2.5%	5.9%	2.9%	2.5%	5.4%	3.4%	2.5%	5.8%	3.6%	2.0%	5.6%	4.5%	2.7%	7.1%
Doncaster	4.1%	2.5%	6.6%	3.8%	2.1%	5.9%	3.6%	2.0%	5.7%	3.7%	1.9%	5.6%	4.6%	1.9%	6.5%
National	3.8%	1.3%	5.2%	3.8%	1.2%	5.0%	4.0%	1.2%	5.2%	3.9%	1.2%	5.1%	4.6%	1.2%	5.8%

The data shows that for primary over the last 5 years there has been a year on year drop in absences however there has been a steady increase for secondary.

3g. Exclusions

This data summarises the number of permanent exclusions by school.

School Name	Number of Permanent Exclusions 2017/18
Armthorpe Academy	1
Pyramid Total	1
Doncaster Total	71

4. Pupil Place Planning

4a. Housing Growth and S106 Contributions

Housing growth impacts school place planning significantly. Data on developments is embedded into the schools capacity place planning data. To project the number of additional children from any proposed developments, the following formula is applied:

- 4 to 10 year old children (Year groups R to 6) = 21 children (3 per year group) per 100 planned dwellings
- 11 to 16 year old children (Year groups 7 to 11) = 15 children (3 per year group) per 100 planned dwellings

Current applications contributing to housing growth in Armthorpe

Shaw Wood Academy

Application Decision	Development	Proposal	No. of Dwellings Proposed
Awaiting Decision	Land on the East Side of Hatfield Lane	Development of 400 houses	400
Granted	Tadcaster Arms Hotel, Doncaster Road	Erection of 9 retail units and 22 apartments	22
Awaiting Decision	Grange Farm	Development of 264 dwellings, landscaping, open space including equipped play areas and eco-resource shelter.	264
Granted	DMBC Depot (St Leger Homes), Mere Lane	Erection of 12 dwellings & associated highways following demolition of existing buildings	12
Shaw Wood Academy Total			698

Tranmoor Primary

Application Decision	Development	Proposal	No. of Dwellings Proposed
N/A	Land at Holme Wood Lane	Proposed development for housing or distribution and warehousing	N/A
Awaiting Decision	6 Mill Street	Change of use from Office use to 11 1-bed appts and 1 2-bed apt	12
Total:			12

Potential for Shaw Wood Academy or Southfield Primary

Application Decision	Development	Proposal	No. of Dwellings Proposed
Granted subject to S106	Former Blacks Engineering Works, Barton Lane	Proposed residential development	22
Total:			22

Pyramid Grand Totals

Locality	Number of Proposed Developments
Pyramid Total	732

Final Overview of Status

Catchment Primary Schools	Application Decision
3 Schools Affected	<ul style="list-style-type: none">• 3 Awaiting decision• 2 Granted• 1 Granted Subject to S106• 1 Status not specified

Source: School Organisation Team - Projected Housing Growth (inc. SCAP 2017)

5. Schools Capacity (SCAP)

Below are the projected school places which were submitted in the 2017 SCAP survey. Primary Places are projected for 5 years including the current year due to the children starting school at 5 years, and secondary places are projected beyond this point due to the age of the children. The row titled CAP shows the capacity within each year group. Where cells are highlighted red, this is due to the projected capacity exceeding the actual places available.

5a. Primary School Projections

YEAR	PAN	CAP	R	PAN-NOR	1	PAN-NOR	2	PAN-NOR	3	PAN-NOR	4	PAN-NOR	5	PAN-NOR	6	PAN-NOR	SUB	BAL
Shaw Wood Academy																		
2018/19	60	420	59	1	48	12	51	9	60	0	73	-13	62	-2	59	1	412	8
2019/20	60	420	65	-5	59	1	48	12	51	9	60	0	73	-13	62	-2	418	2
2020/21	60	420	62	-2	65	-5	59	1	48	12	51	9	60	0	73	-13	418	2
2021/22	60	420	61	-1	62	-2	65	-5	59	1	48	12	51	9	60	0	406	14
2022/23	60	420	50	10	64	-4	65	-5	68	-8	62	-2	51	9	54	6	414	6
Tranmoor Primary																		
2018/19	60	420	60	0	60	0	53	7	59	1	58	2	62	-2	60	0	412	8
2019/20	60	420	45	15	60	0	60	0	53	7	59	1	58	2	62	-2	397	23
2020/21	60	420	52	8	45	15	60	0	60	0	53	7	59	1	58	2	387	33
2021/22	60	420	40	20	52	8	45	15	60	0	60	0	53	7	59	1	369	51
2022/23	60	420	43	17	40	20	52	8	45	15	60	0	60	0	53	7	353	67
Southfield Primary																		
2018/19	30/6	300	30	0	54	6	40	20	52	8	30	0	28	2	31	-1	265	35
2019/20	30/6	300	50	-20	30	0	54	6	40	20	52	8	30	0	28	2	284	16
2020/21	30/6	300	48	-18	50	-20	30	0	54	6	40	20	52	8	30	0	304	-4
2021/22	30/6	300	42	-12	48	-18	50	-20	30	0	54	6	40	20	52	8	316	-16
2022/23	30/6	300	42	-12	42	-12	48	-18	50	-20	30	30	54	6	40	20	306	-6

YEAR	PAN	CAP	R	PAN-NOR	1	PAN-NOR	2	PAN-NOR	3	PAN-NOR	4	PAN-NOR	5	PAN-NOR	6	PAN-NOR	SUB	BAL
Our Lady of Sorrows																		
2018/19	30	210	24	6	26	4	24	6	30	0	20	10	23	7	21	9	168	42
2019/20	30	210	21	9	24	6	26	4	24	6	30	0	20	10	23	7	168	42
2020/21	30	210	20	10	21	9	24	6	26	4	24	6	30	0	20	10	165	45
2021/22	30	210	20	10	20	10	21	9	24	6	26	4	24	6	30	0	165	45
2022/23	30	210	17	13	20	10	20	10	21	9	24	6	26	4	24	6	152	58

5b. Primary Summary

YEAR	PAN	CAP	R	PAN-NOR	1	PAN-NOR	2	PAN-NOR	3	PAN-NOR	4	PAN-NOR	5	PAN-NOR	6	PAN-NOR	SUB	BAL
2018/19	180	1350	173	7	188	22	168	42	201	9	181	-1	175	5	171	9	1257	93
2019/20	180	1350	181	-1	173	7	188	22	168	42	201	9	181	-1	175	5	1267	83
2020/21	180	1350	182	-2	181	-1	173	7	188	22	168	42	201	9	181	-1	1274	76
2021/22	180	1350	163	17	182	-2	181	-1	173	7	188	22	168	42	201	9	1256	94
2022/23	180	1350	152	28	166	14	185	-5	184	-4	176	34	191	19	171	39	1225	125

Primary Overview

Primary data shows an emerging shortfall of primary places.

**5c. Secondary School Projections
Armthorpe Academy**

YEAR	PAN	CAP	7	PAN-NOR	8	PAN-NOR	9	PAN-NOR	10	PAN-NOR	11	PAN-NOR	SUB	BAL	12	13	14	6TH
2018/19	180	900	122	58	97	83	116	64	80	100	80	100	495	405	-	-	-	-
2019/20	180	900	109	71	122	58	97	83	116	64	116	64	560	340	-	-	-	-
2020/21	180	900	111	69	109	71	122	58	97	83	97	83	536	364	-	-	-	-
2021/22	180	900	117	63	111	69	109	71	122	58	125	55	584	316	-	-	-	-
2022/23	180	900	128	52	120	60	114	66	112	68	115	65	589	311	-	-	-	-
2023/24	180	900	108	72	120	60	123	57	117	63	120	60	588	312	-	-	-	-
2024/25	180	900	121	59	111	69	123	57	126	54	126	54	607	293	-	-	-	-
2025/26	180	900	121	59	124	56	114	66	123	57	123	57	605	295	-	-	-	-

**5d. Contributing Factors
Hungerhill Academy**

YEAR	CAP	ALL CAP	7	PAN-NOR	8	PAN-NOR	9	PAN-NOR	10	PAN-NOR	11	PAN-NOR	SUB	BAL	12	13	14	6TH
2018/19	252	1260	256	-4	252	0	234	18	232	20	221	31	1195	65	-	-	-	-
2019/20	252	1260	275	-23	257	-5	253	-1	235	17	233	19	1253	7	-	-	-	-
2020/21	252	1260	244	8	276	-24	258	-6	254	-2	236	16	1268	-8	-	-	-	-
2021/22	252	1260	227	25	244	8	276	-24	258	-6	254	-2	1259	1	-	-	-	-
2022/23	252	1260	237	15	229	23	245	7	276	-24	258	-6	1245	15	-	-	-	-
2023/24	252	1260	222	30	238	14	230	22	246	6	277	-25	1213	47	-	-	-	-
2024/25	252	1260	230	22	223	29	239	13	231	21	247	5	1170	90	-	-	-	-
2025/26	252	1260	229	23	230	22	223	29	239	13	231	21	1152	108	-	-	-	-

Cluster Total

YEAR	CAP	ALL CAP	7	PAN-NOR	8	PAN-NOR	9	PAN-NOR	10	PAN-NOR	11	PAN-NOR	SUB	BAL	12	13	14	6TH
2018/19	432	2160	378	54	349	83	350	82	312	120	301	131	1690	470	-	-	-	-
2019/20	432	2160	384	48	379	53	350	82	351	81	349	83	1813	347	-	-	-	-
2020/21	432	2160	355	77	385	47	380	52	351	81	333	99	1804	356	-	-	-	-
2021/22	432	2160	344	88	355	77	385	47	380	52	379	53	1843	317	-	-	-	-
2022/23	432	2160	365	67	349	83	359	73	388	44	373	59	1834	326	-	-	-	-
2023/24	432	2160	330	102	358	74	353	79	363	69	397	35	1801	359	-	-	-	-
2024/25	432	2160	351	81	334	98	362	70	357	75	373	59	1777	383	-	-	-	-
2025/26	432	2160	350	82	354	78	337	95	362	70	354	78	1757	403	-	-	-	-

Secondary Overview

This data shows no shortfalls within Armthorpe, however neighbouring Hungerhill School has some forecast shortfalls, when you look at the cluster the number of surplus places in Armthorpe balance this out.

5e. Childcare Places & Availability

The table below shows the occupancy levels and the availability of the childcare provision for the Summer 2018 term.

Childcare Provision within Schools, PVI Sector Full Daycare and Sessional Care and Childminders

School, PVI and Childminder Provision	0 to 1 Yrs			2 Yrs			3 & 4 Yrs			5 to 10 Yrs			11 to 14 Yrs			Total			VACANCY RATE	Availability					
	PLACES	NOR (FTE)	BALANCE	PLACES	NOR (FTE)	BALANCE	PLACES	NOR (FTE)	BALANCE	PLACES	NOR (FTE)	BALANCE	PLACES	NOR (FTE)	BALANCE	PLACES	NOR (FTE)	BALANCE		Annual	Before 8am	8am to 6pm	After 6pm	Weekends	Shift Patterns
Shaw Wood Academy							39	35	4							39	35	4	10%	TT		1			
Southfield Primary School							26	19	7							26	19	7	27%	TT		1			
Tranmoor Primary School				20	20	0	39	39	0							59	59	0	0%	TT		1			
School Totals				20	20	0	104	93	11							124	113	11	9%	-	0	3	0	0	0
Armthorpe Daycare Nursery	12	6	6	18	12	6	24	18	6							54	36	18	33%	AY	1	1			1
PVI Totals	12	6	6	18	12	6	24	18	6						54	36	18	33%	-	1	1	0	0	1	
13 x Childminder	16	5	11	16	11	5	16	11	5	61	35	26	5	3	2	114	65	49	43%	-	10	10	6	1	8
All Sector Total	28	11	17	54	43	11	144	122	22	61	35	26	5	3	2	292	214	78	27%	-	11	14	6	1	9

The data shows that 27% of the vacancies overall remain vacant within the school, PVI and childminder provision. The data also shows that there are vacancies available for every age group, and there is some availability for shift patterns.

School based and PVI Sector Breakfast Childcare Provision

School & PVI Breakfast Provision	0 to 1 Yrs			2 Yrs			3 & 4 Yrs			5 to 10 Yrs			11 to 14 Yrs			Total			VACANCY RATE	Availability					
	PLACES	NOR (FTE)	BALANCE	PLACES	NOR (FTE)	BALANCE	PLACES	NOR (FTE)	BALANCE	PLACES	NOR (FTE)	BALANCE	PLACES	NOR (FTE)	BALANCE	PLACES	NOR (FTE)	BALANCE		Annual	Before 8am	8am to 6pm	After 6pm	Weekends	Shift Patter
Armthorpe Shaw Wood Academy							13	8	5	21	18	3				34	26	8	24%	TT	1				
Our Lady of Sorrows Catholic Voluntary Acaden							6	5	1	26	21	5				32	26	6	19%	TT	1				
Southfield Primary							10	9	1	15	12	3				25	21	4	16%	TT	1				
Tranmoor Primary School							6	3	3	26	23	3				32	26	6	19%	TT	1				
School Totals							35	25	10	88	74	14				123	99	24	20%	-	4	0	0	0	0
Armthorpe Daycare Nursery Ltd							2	0	2	3	0	3				5	0	5	100%	AY	1	1			
PVI Sector Totals							2	0	2	3	0	3				5	0	5	100%	-	1	1	0	0	0
All Sector Totals							37	25	12	91	74	17	0	0	0	128	99	29	23%	-	5	1	0	0	0

The data shows that 23% of the vacancies overall remain vacant for School & PVI Breakfast Provision, allowing flexibility for any increase in requirements.

School based and PVI Sector After School Childcare Provision

School & PVI After School Provision	0 to 1 Yrs			2 Yrs			3 & 4 Yrs			5 to 10 Yrs			11 to 14 Yrs			Total			VACANCY RATE	Availability					
	PLACES	NOR (FTE)	BALANCE	PLACES	NOR (FTE)	BALANCE	PLACES	NOR (FTE)	BALANCE	PLACES	NOR (FTE)	BALANCE	PLACES	NOR (FTE)	BALANCE	PLACES	NOR (FTE)	BALANCE		Annual	Before 8am	8am to 6pm	After 6pm	Weekends	Shift Patterns
Armthorpe Shaw Wood Academy							13	9	4	21	20	1				34	29	5	15%	TT		1			
Our Lady of Sorrows Catholic Voluntary Acaden							6	4	2	18	16	2				24	20	4	17%	TT		1			
Tranmoor Primary School							6	3	3	26	23	3				32	26	6	19%	TT		1			
School Totals							25	16	9	65	59	6				90	75	15	17%	-	0	3	0	0	0
Armthorpe Daycare Nursery Ltd							2	0	2	3	0	3				5	0	5	100%	TT		1	1		
Southfield Kids club							8	8	0	16	12	4				24	20	4	17%	TT		1			
PVI Sector Totals							10	8	2	19	12	7				29	20	9	31%	-	0	2	1	0	0
All Sector Totals							35	24	11	84	71	13	0	0	0	119	95	24	20%	-	0	5	1	0	0

The data shows that 20% of the vacancies overall remain vacant for the school & PVI after school provision, allowing flexibility for any increase in requirements. The data also shows that there are vacancies available for every age group, and there is provision that operates after 6pm.

School based and PVI Sector Holiday Childcare Provision

School & PVI Holiday Provision	0 to 1 Yrs			2 Yrs			3 & 4 Yrs			5 to 10 Yrs			11 to 14 Yrs			Total			VACANCY RATE	Availability					
	PLACES	NOR (FTE)	BALANCE	PLACES	NOR (FTE)	BALANCE	PLACES	NOR (FTE)	BALANCE	PLACES	NOR (FTE)	BALANCE	PLACES	NOR (FTE)	BALANCE	PLACES	NOR (FTE)	BALANCE		Annual	Before 8am	8am to 6pm	After 6pm	Weekends	Shift Pattern
Tranmoor Primary School							6	3	3	26	23	3				32	26	6	19%	SH		1			
School Totals							6	3	3	26	23	3				32	26	6	19%	-	0	1	0	0	0
Armthorpe Daycare Nursery Ltd							10	4	6	3	1	2				13	5	8	62%	SH		1			
PVI Sector Totals							10	4	6	3	1	2				13	5	8	62%	-	0	1	0	0	0
All Sector Totals							16	7	9	29	24	5	0	0	0	45	31	14	31%	-	0	2	0	0	0

The data shows that 31% of the vacancies overall remain vacant for school & PVI holiday provision, allowing flexibility for any increase in requirements. The data also shows that there are vacancies available for every age group.

5f. Childcare Projections

This table below measures the birth rates of children to anticipate the future projected need for childcare places within this pyramid. This data shows the anticipated projected place requirements for the spring and summer 2018 terms. This information is displayed using a red, amber green (RAG rating)

- **Green** depicts sufficient available places
- **Amber** depicts the potential for a shortfall of places if demand increases
- **Red** shows an identified need where supply does not meet local demand.

Summary of Projected Places Spring 2018

Spring Term 2018	0 and 1 Years	2 Years	3 and 4 Years	5 to 10 Years	11 to 14 Years
Armthorpe Pyramid	Green	Amber	Green	Amber	Green
Doncaster Total	Green	Green	Green	Green	Green

Armthorpe projections show that there is a potential for a shortfall of places for children aged 2 years and between 5 to 10 years. This supports the outcome of the gap analysis where more flexibility in provision is required around childcare provision after 6pm and on weekends. We will continue to monitor this over the coming terms.

On a boroughwide basis early indications of birth vs previous occupancy rates show that there are a sufficient number of places available for all ages in Spring 2018.

Summary of Projected Places Summer 2018

Summer Term 2018	0 and 1 Years	2 Years	3 and 4 Years	5 to 10 Years	11 to 14 Years
Armthorpe Pyramid	Green	Amber	Green	Amber	Green
Doncaster Total	Green	Green	Green	Green	Green

Armthorpe projections show that there is a potential for a shortfall of places for children aged 2 years and between 5 to 10 years. This supports the outcome of the gap analysis where more flexibility in provision is required around childcare provision after 6pm and on weekends. We will continue to monitor this over the coming terms. On a boroughwide basis, early indications of birth vs. previous occupancy rates show that there are a sufficient number of places available for all ages in summer 2018.

5g. Capital Projects

Below is an overview of Armthorpe pyramid capital projects.

School / Academy Projects	Status
Southfield Primary - Conversion of existing hall to teaching space.	Approved and works complete
Our Lady of Sorrows - Build of 2 new classrooms, refurbishment of existing space to toilets and breakout area.	Complete
Partial rebuild of Armthorpe Academy	Approved

PVI Sector Projects	Status
N/A	N/A

Safeguarding and Access Projects		
School / Academy	Description of Project	Status
N/A		

5h. SEND Provision

This data shows the number of pupils identified as SEND per school, what proportion of the total cohort this represents and their SEND status.

School Name	Number of SEND Pupils	% of Total Cohort	Education, Health and Care Plan	SEN Support	Statement of Special Needs
Armthorpe Tranmoor Primary	58	14%	2	54	2
Our Lady of Sorrows	29	17%	4	24	1
Shaw Wood Academy	60	14%	3	57	0
Southfield Primary	35	13%	4	30	1
Armthorpe Academy	54	11%	13	41	0
Pyramid Total	236	13%	26	206	4
Doncaster Total	6668	16%	816	5486	366

- There were a total of 1247 children / young people living in Doncaster with a special educational need or disability aged 0 to 19 years old registered with Together Information Exchange (TIE), at September 2017. This shows an increase of 158 children / young people since 2015.
- At October 2017, there were a total of 131 children known to the Pre-School Inclusion Team living in Doncaster with a special educational need or disability aged 0 to 5 years old.
- At Summer 2017 there were 71 Ofsted registered group childcare providers and 213 childminders on the Local Authority Directory registered to provide the free early years entitlement. All have to meet the requirements of the SEN Code of Practice and Disability Discrimination Act requirements. Three Ofsted registered group providers are designated as “enhanced provisions”, these are within Wheatley, Intake & Belle Vue and Adwick.
- A specialist provision for pre-school children with SEND is based within the Central Children’s Centre. The setting is registered with Ofsted and offers sessions for funded 2, 3 & 4 year old children.
- There were a total of 513 children educated within schools that accessed support through an Education, Health & Care Plan. An additional 5762 children had SEN support or a statement, as reported at the May Schools Census 2017.

- There are five special schools within Doncaster. In the Summer Term 2017 School Childcare data collection, the following information was provided regarding extended services outside of the school day.

Pyramid	Name of School	Age range	Type of provision offered
Adwick	North Ridge Community School	3 to 19	Breakfast and After school
Ridgewood	Stone Hill School	7 to 16	Breakfast
Conisbrough	Pennine View School	7 to 16	No provision
Hatfield	Coppice School	3 to 19	After school
Danum	Heatherwood School	3 to 19	No provision

A new special school for communication and interaction special educational needs is to be established in Doncaster.

The school will primarily be for children and young people with Autism Spectrum Disorder, specifically high functioning ASD and Asperger's. This cohort may also have social, emotional and mental health needs and specific learning difficulties.

Working with the Department for Education, the new school is envisaged to be on the Hungerhill Enterprise Park site. This school would have places for 100 children and young people, 80 of which would be filled by the council, with the remaining 20 offered to neighbouring authorities.

The school will be closely associated with another secondary school to enable pupils to access a mainstream curriculum where this is appropriate. The development will take place as part of the programme creating 1,600 new special free school places across England, made up of a total of 19 new schools.

5i. Childcare Costs

The average costs are indicated across the different Ofsted registered childcare types in the table below. As the opening times for day nurseries and childminders can vary, the weekly costs are based on average opening hours of 8am to 6pm. Breakfast and after-school are grouped within 'out of school' costs in line with the Yorkshire and Humber format to allow an easy comparison. This table shows the average costs of childcare for this pyramid in comparison to boroughwide and Yorkshire and Humber averages.

Pyramid	Childminder	Full Daycare	Sessional Care	Out of School Childcare		Holiday P/scheme
	Average Per Day	Average Per Week	Average Per Session	Average Per Session		Average Per Day
				Before School	After School	
Armthorpe	£30.67	£140.00	£15.00	£10.25	£10.50	£30.75
Doncaster	£33.83	£183.82	£13.36	£5.94	£8.98	£26.09
Yorkshire and Humber*	£38.00	£204.96	Not Known	Not Known	£10.96	£25.14

Average childcare costs across the Armthorpe pyramid area indicate:

- Childminders costs are lower than the average for Doncaster, and significantly lower than the Yorkshire & Humber average.
- Day nurseries (Full Daycare) costs are significantly lower than the average for Doncaster and Yorkshire & Humber average.
- Sessional care costs for Armthorpe are slightly higher than the Doncaster average. There are no Yorkshire and Humber costs to compare with.
- Out of school childcare for before school is comparable to the Doncaster average and after school care is slightly higher than the Doncaster average. There are no costs to compare with for the Yorkshire & Humber 'before school childcare', but after school care is slightly lower.
- The cost of a Holiday playscheme is comparable to the Doncaster average and slightly higher than the Yorkshire & Humber average.

School childcare costs - The range of costs submitted by the schools in this area can vary a great deal therefore we cannot calculate an average cost as this may not be a true reflection. It is recommended to ascertain the service and actual cost for a particular school, contact the Doncaster Families Information Service or the school directly.

6. Early Education Funding

6a. 2 Year Old Early Education

Eligibility Criteria

The provision of early education for up to 15 hours per week for eligible 2 year olds starting the term after their 2nd birthday. Families must be in receipt of one or more of the following:

- Income Support
- Income-based Jobseeker's Allowance (JSA)
- Income-related Employment and Support Allowance (ESA)
- Support through Part 6 of the Immigration and Asylum Act
- Have an annual household income under £16,190 and claim Child Tax Credit and / or Working Tax Credit
- Guaranteed Element of State Pension Credit
- The Working Tax Credit 4-week run on (the payment you get when you stop qualifying for Working Tax Credit)
- Universal Credit

Children are also entitled to a place if:

- Your child is looked after by the local council
- Your child has a current statement of special educational needs (SEN) or an education, health and care plan
- Your family is in receipt of Disability Living Allowance for the child
- A child who has left care through special guardianship order, child arrangement order or adoption order

2 Year Old (Boroughwide)

Autumn 2017	Spring 2018	Summer 2018
80%	75%	80%

6b. 3 and 4 Year Old Early Education (Universal)

Eligibility Criteria

This is an entitlement for all children starting the term following their third birthday for up to 15 hours per week.

3 and 4 Year Old Universal (Boroughwide)

Autumn 2017	Spring 2018	Summer 2018
92%	98%	98%

6c. 30 Hours Free Childcare for Eligible 3 and 4 Year Olds

Eligibility Criteria

Eligibility for working parents includes: employed, self-employed and workers on a zero hour's contract. To take up the 30 hours of free childcare families need to meet all the following criteria:

- Each parent earns less than £100,000 per year
- Both parents are working and in a lone parent family the sole parent must work
- Each parent works a minimum of 16 hours a week or earns on average a weekly minimum amount that is equivalent to 16 hours a week at either the National Minimum Wage or National Living Wage, for example, £120 a week based on National Living Wage

There are exceptions to both parents having to work. Families where one parent does not work (or neither parent works) will not usually be entitled to the 15 hours extended entitlement; however, they will be eligible where:

- both parents are employed but one (or both parents) is temporarily away from the workplace on: parental, maternity or paternity leave; adoption leave; or on statutory sick pay

- one parent is employed and one parent:
- has substantial caring responsibilities based on specific benefits received for caring
- is disabled or incapacitated based on receipt of specific benefits

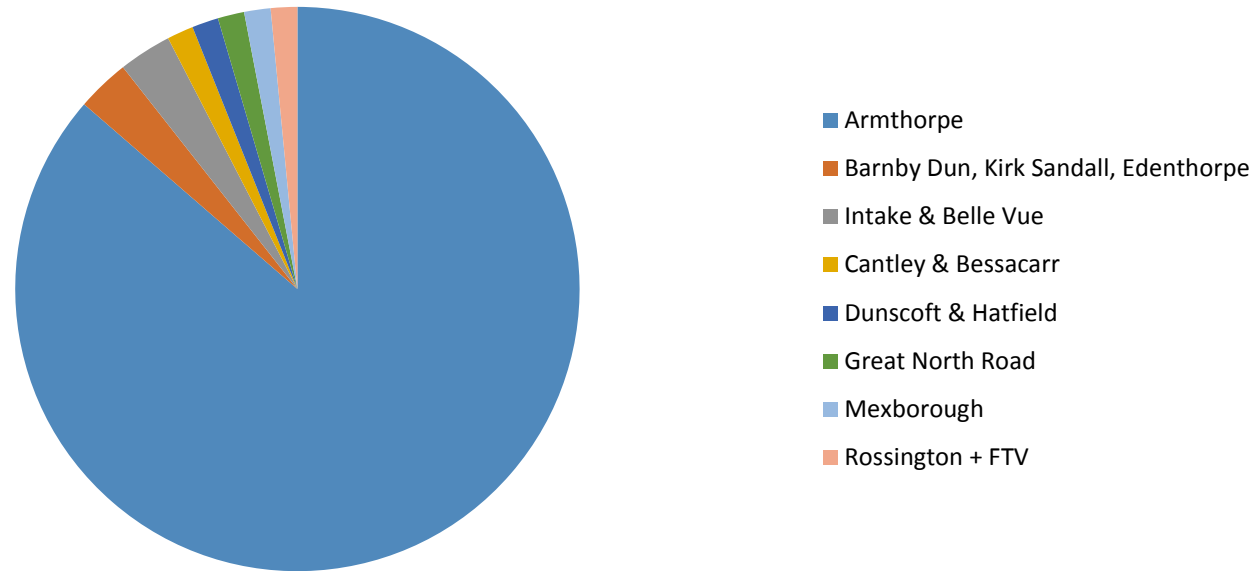
30 Hours (Boroughwide)

Autumn 2017	Spring 2018	Summer 2018
78%	79%	76%

We have assessed where families who access their additional hours and their home locality, the data can be seen below

Armthorpe	School	PVI	Total	%
Armthorpe	50	7	57	86
Barnby Dun, Kirk Sandall, Edenthorpe	1	1	2	3
Intake & Belle Vue	2	0	2	3
Cantley & Bessacarr	0	1	1	2
Dunsoft & Hatfield	1	0	1	2
Great North Road	0	1	1	2
Mexborough	0	1	1	2
Rossington + FTV	1	0	1	2
TOTAL	55	11	66	100

Home Locality of Families Accessing Additional Hours Within Pyramid



6d. Future Plans

We anticipate an increase in take up over the coming terms. As part of our sufficiency strategy we have applied a methodology to predict future place needs. The following table shows the pyramid demand by term with potential maximum vs. minimum take up and any potential shortfall of places. This data is based on the combined need for places for both 30 hours and universal entitlement.

This information is displayed using a red, amber green (RAG rating)

- **Green** depicts sufficient available places
- **Amber** depicts the potential for a shortfall of places if demand increases
- **Red** shows an identified need where supply does not meet local demand.

Sub Locality Area	Spring 18		Summer 18	
	MAX (100% Take Up)	MIN (Current Universal Take Up)	MAX (100% Take Up)	MIN (Current Universal Take Up)
Armthorpe				
Doncaster Total				

This data shows that the Armthorpe sub-locality area has the potential for a small shortfall of places this year if 100% of the children take up their place, however this is not a significant enough shortfall to facilitate the opening of new provision. We will continue to monitor the local market and where appropriate work with local provision to facilitate more flexible business models. The Doncaster total shows a surplus of places for the year ahead.

7. Parent Feedback

The annual Parent Demand survey collects key data from a cross sector of the Doncaster population and informs the planning undertaken by the local authority around managing the childcare market. The data below summarises the key information for the pyramid.

Number of pyramid respondents

143

Percentage of the Overall Response

7

Ages of children

0 to 1 Years	<table border="1"><tr><td>58</td></tr></table>	58
58		
2 Years	<table border="1"><tr><td>36</td></tr></table>	36
36		
3 and 4 Years	<table border="1"><tr><td>45</td></tr></table>	45
45		
5 to 7 Years	<table border="1"><tr><td>45</td></tr></table>	45
45		
8 to 10 Years	<table border="1"><tr><td>27</td></tr></table>	27
27		
11+ Years	<table border="1"><tr><td>23</td></tr></table>	23
23		

Main reasons using childcare

Work	<table border="1"><tr><td>55</td></tr></table>	55
55		
Child development	<table border="1"><tr><td>5</td></tr></table>	5
5		
Training	<table border="1"><tr><td>2</td></tr></table>	2
2		
Early education funding	<table border="1"><tr><td>13</td></tr></table>	13
13		

Main reasons not using childcare

Childcare not currently required	<table border="1"><tr><td>28</td></tr></table>	28
28		
Location not accessible	<table border="1"><tr><td>1</td></tr></table>	1
1		
Session times	<table border="1"><tr><td>6</td></tr></table>	6
6		
Costs	<table border="1"><tr><td>35</td></tr></table>	35
35		
SEND	<table border="1"><tr><td>1</td></tr></table>	1
1		
Informal childcare	<table border="1"><tr><td>33</td></tr></table>	33
33		

For more information contact:

Write to: Learning Provision Organisation Service
Doncaster Council
Civic Office
Waterdale
Doncaster
DN1 3BU

Email: lp.org@doncaster.gov.uk
Website: www.doncaster.gov.uk/learningprovision

Civic Office
Waterdale, Doncaster, South Yorkshire, DN1 3BU

Information can be made available in other formats such as Braille or Audio Tape on request. If you know someone who may need this service, please contact a member of staff for more information or if you need any other help or advice.

www.doncaster.gov.uk