



Doncaster  
Council

Report

---

# Learning Provision Organisation: Key Data Report Edlington Pyramid

**Autumn 2018 Release**

Analysis of school and childcare provision within the Edlington pyramid.

## Contents

1. Executive Summary.....	4
1a. Demographic.....	4
1b. Schools.....	4
1c. Childcare and Early Years.....	5
1e. Key Points.....	5
2. The Pyramid in Context.....	6
2a. Overview.....	6
2b. Demographics and Population.....	6
2c. Pyramid Profile.....	7
2d. Ethnicity and Migration.....	8
2e. Indices of Multiple Deprivation (IMD) Overview.....	9
2f. Working Tax Credits.....	9
2g. Free School Meals (FSM).....	10
2h. Birth Trends.....	11
2i. Social Care Referrals.....	12
3. Structure of Learning Provision.....	13
3a. Locality of Provision.....	15
3b. Academy Conversions.....	16
3c. Social Mobility.....	17
3d. English as Other Language (EAL).....	19
3e. Admissions.....	20
Secondary (Spring Census 2018).....	21
3f. Pupil Absence.....	22
3g. Exclusions.....	23
4. Pupil Place Planning.....	24
4a. Housing Growth and S106 Contributions.....	24
5. School Capacity (SCAP).....	27
5a. Primary School Projections.....	27
5b. Primary Summary.....	29
5c. Secondary School Projections.....	29
5d. Childcare Places & Availability.....	31
5e. Childcare Projections.....	35
5f. Capital Projects.....	36
5g. SEND Provision.....	37
5h. Childcare Costs.....	39

6. Early Education Funding.....	40
6a. 2 Year Old Early Education .....	40
6b. 3 and 4 Year Old Early Education (Universal) .....	41
Universal Entitlement Take Up .....	41
6c. 30 Hours Free Childcare for Eligible 3 and 4 Year Olds .....	42
6d. Future Plans .....	45
7. Parent Feedback .....	46

# 1. Executive Summary

## 1a. Demographic

The Edlington pyramid is located in the South West area of Doncaster. Within this pyramid 93% of the children are white British.

In 2010 the Edlington Pyramid had an IMD of 44.29% and was the 13<sup>th</sup> most deprived area in Doncaster, 2015 data shows that Edlington IMD has increased to 47.50% but is still the 13<sup>th</sup> most deprived area in Doncaster. The Edlington pyramid is higher than the Doncaster average of 35.40% (2015).

Birth rates in the Edlington pyramid have slightly increased in the last year.

Within Edlington 6% of primary pupils and 3% secondary pupils have EAL, the most common first language other than English locally is Polish in the primary pyramid and Polish followed by Punjabi in the secondary pyramid.

36% of primary children in Edlington access school places outside of their catchment school, 9% of these were out of pyramid.

38% of secondary children access from outside of their catchment school of which 28% access faith schools.

There are a number of planned housing developments, totalling 851 dwellings coming to the Edlington area over the next few years.

The Edlington pyramid consists of a range of learning provision types from the school / academy and PVI sector offering a mix of flexible provision.

## 1b. Schools

There are 7 schools in the Edlington pyramid, 4 maintained schools and 3 academies.

There is a program of capital and S106 investment in Doncaster. Within this pyramid no schools have accessed capital funding.

Pupil absence in the pyramid has varied only slightly over the past five years.

Permanent exclusions have remained at 0 for the years 2016/17 and 2017/18.

Primary projections for the next four years show that although there are particular clusters of shortfalls overall across the pyramid, sufficient places remain available.

Secondary projections show a possible shortfall from year 2020/21 from year 9 and onwards, neighbouring Astrea Academy Woodfields shortfalls could also impact on Sir Thomas Wharton Academy.

### **1c. Childcare and Early Years**

Childcare places are based on summer terms as this shows the highest occupancy throughout the year. In Summer 2018 there were vacant places in all provision types, and there are places available after 6pm and to accommodate shift patterns.

Based on current birth rates and average take up over previous terms we are projecting a potential shortfall in childcare places for 5 to 14 year olds outside of school hours.

Childcare costs within Edlington are roughly in line with the Doncaster average for childminders, however costs are higher for full daycare and sessional care. Costs for out of school childcare and holiday playscheme are below the Doncaster average.

The take up of 2 year old early education funding boroughwide was 80% in Autumn 2017, 75% in Spring 2018 and 80% in Summer 2018.

The take up of the 3 and 4 year old universal provision boroughwide was 92% in Autumn 2017, 98% in Spring 2018 and 98% in Summer 2018.

The take up of the 30 hours extended entitlement boroughwide was 78% in Autumn 2017, 79% in Spring 2018 and 76% in Summer 2018.

There are no identified concerns from families in the Edlington area highlighting shortfalls in provision

### **1d. SEND**

There is no specific SEND provision in Edlington, however all provision has to meet the requirements of the SEN Code of Practice and Disability Discrimination Act requirements.

### **1e. Key Points**

Due to the large number of housing developments in the area there may be shortfalls in places within both the primary and secondary sectors. There are no identified concerns regarding the childcare sector of the Edlington area at present.

## 2. The Pyramid in Context

### 2a. Overview

The data within this report aims to provide an overview of the Edlington pyramid, the available learning provision within the pyramid and identify any pressures or shortfalls which will form part of the borough wide Learning Provision Organisation Strategy.

The first section gives an overview of the dynamics of the area and then moves onto analysis of pupil place provision.

### 2b. Demographics and Population

Doncaster is an ambitious borough and very few places in the UK come close to us in terms of delivering major projects over the last 10 years. These projects are world class and have changed Doncaster considerably, with several more multi-million pound developments already underway and in the pipeline.

Landmark developments include:

- The Great Yorkshire Way Project (FARRS)
- iPort
- Aero Centre, Yorkshire
- Project Unity (DN7)
- National Rail College
- Institute of Technology
- PGA European Tour Development at Rossington Hall
- Doncaster Corn Exchange Restoration
- Bader School
- DUTC
- The Big Picture

The Urban Centre Master plan including; City Gateway, Enterprise Market Place, Waterfront, Minster Canalside, Civic/Business District, Parklands, Retail Core, Innovation Quarter, Waterfront Phase 2.

## 2c. Pyramid Profile

The catchment area for Sir Thomas Wharton is for children living in Edlington, Warmsworth, Braithwell, Clifton, Loversall, Micklebring, Stainton, Wadworth and a few outlying villages.

**Edlington** lies immediately southwest of the river Don. The village itself stands approximately one mile from the A1 motorway and only four miles from Doncaster town centre. Edlington formed part of the South Yorkshire Coalfield; the closure of Yorkshire Main, the local colliery in 1985 removed the area's major source of employment and income. The area is now dependant on two local employers, Polypipe and Hepworths. Earlier this year Home Bargains opened a new store in the area creating 50 new jobs for local residents. Old Edlington lies to the south of Edlington and is a small settlement made up of a few houses with no services.

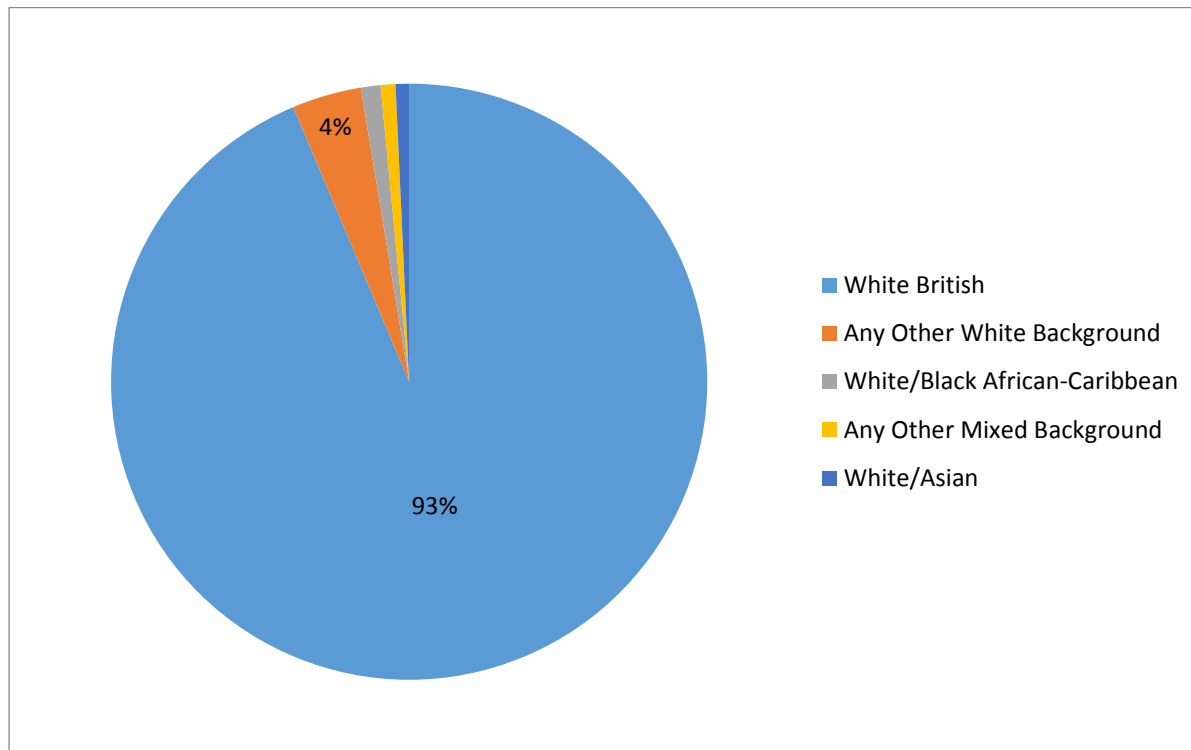
**Warmsworth** adjoins Edlington and is generally a more affluent community. Warmsworth is a picturesque village with its construction from the local limestone quarries. The village is well served by road networks with easy access to the A1 and the M18 motorways, however, the development of the A1 has resulted in the village becoming fragmented and divided by major roads.

**Wadworth** is five miles from Doncaster on the main A60 to Nottingham which runs through Tickhill, Worksop and Mansfield. It is bisected by the M18 and A1(M) which are inaccessible from Wadworth.

**Tickhill** is a village located in the borough, seven miles south of the Town Centre in the Torne Valley. It is a rural village, viewed by many local residents as a place with important historical connections and high conservation value. Both the castle (with connections as far back as 1066) and the 13<sup>th</sup> century church of St Mary, feature in many historical documents. Occupying the Centre are shops, restaurants, pubs and houses. There are convenient road links to Doncaster, Worksop and Sheffield with access to the M1 at Maltby and the M18 and A1 at Warmsworth. **Loversall** remains little more than a hamlet housing a couple of hundred people, with a fine medieval church. **Rural Communities of Braithwell, Clifton, Micklebring and Stainton** are a few of several small villages in this part of Doncaster, which are of rural character and have very few or no services.

## 2d. Ethnicity and Migration

This data shows the breakdown of significant ethnicities of the children within the Edlington Pyramid, 93% of the children are White British. The main nationality of any other white background is Polish



\*Source: School Census Spring 2017



## 2e. Indices of Multiple Deprivation (IMD) Overview

This data shows a comparison between the 2015 IMD and the 2010 IMD. The data shows that Edlington remains above the Doncaster average and the IMD has increased by 2.21% since 2010.

2015 IMD			2010 IMD		
Pyramid	2015	(1 most deprived, 16 least deprived)	Pyramid	2010	(1 most deprived, 16 least deprived)
Edlington Pyramid	47.50%	13	Edlington Pyramid	44.29%	13
<b>Doncaster Average</b>	<b>35.40%</b>	-	<b>Doncaster Average</b>	<b>33.56%</b>	-

\* Source: 2015 Indices of Multiple Deprivation <https://www.gov.uk/government/collections/english-indices-of-deprivation>

## 2f. Working Tax Credits

Percentage take up of the Childcare Element of Working Tax Credits. This take up is slightly lower than the Doncaster average and slightly higher than the National average.

School Pyramid Area	2013 - 2014 Tax Year
Edlington Pyramid	14.49%
<b>Doncaster Average</b>	<b>14.74%</b>
<b>National Average</b>	<b>14.30%</b>

### 2g. Free School Meals (FSM)

Number of children accessing Free School Meals within the pyramid. Data shows that Edlington has a lower level of FSM take up than the Doncaster average.

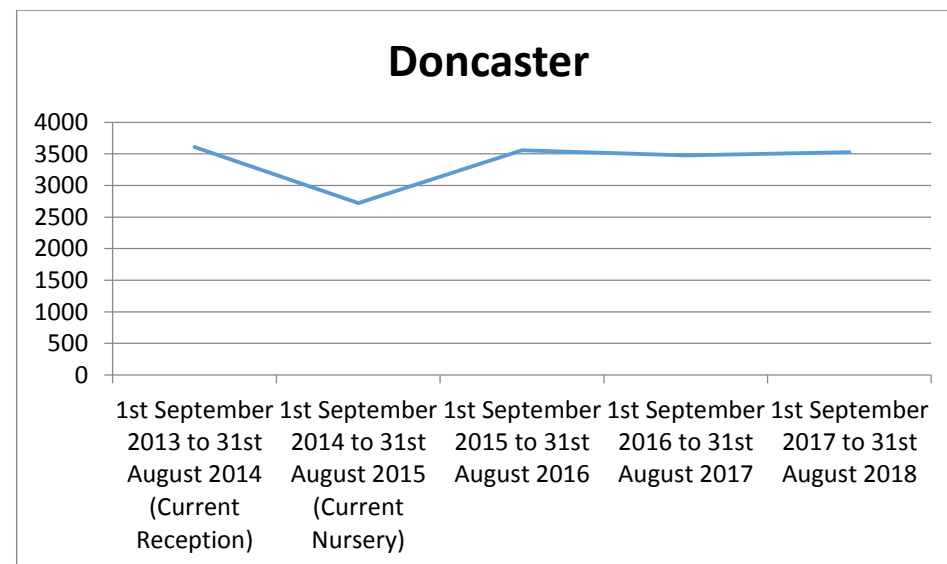
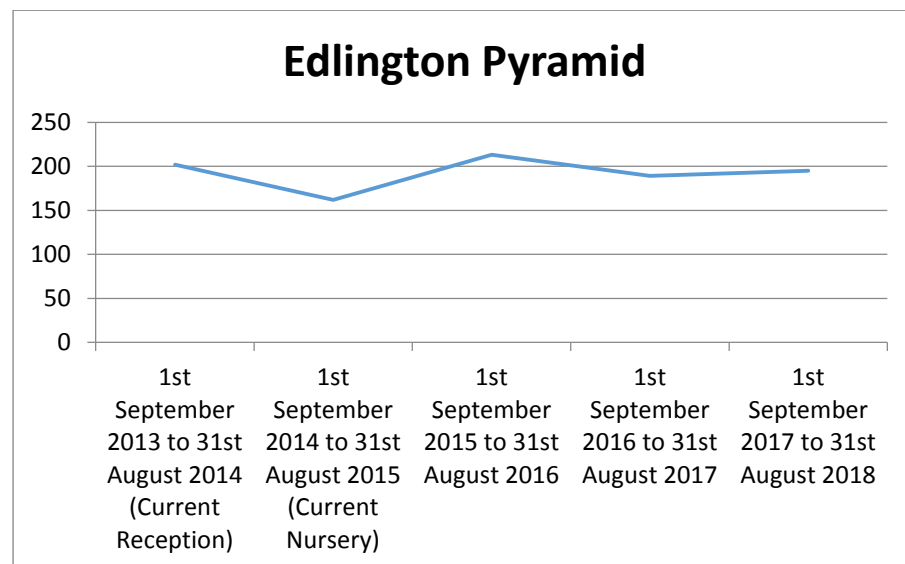
<b>School Pyramid Area</b>	<b>% FSM</b>
Edlington Pyramid	12%
<b>Non-geographic*</b>	<b>17%</b>
<b>Doncaster Average</b>	<b>16%</b>

*\* Non-geographic includes all special schools and PRUs, plus McAuley and XP secondary schools*

## 2h. Birth Trends

Baseline data for pupil place planning is based on health data. This data identifies children's residency at time of birth, and is widely accepted as the most accurate dataset of children residing within the borough. The data shows the birth trends for children residing in Edlington at birth against the borough wide trends.

Pyramid	1st September 2013 to 31st August 2014 (Current Reception)	1st September 2014 to 31st August 2015 (Current Nursery)	1st September 2015 to 31st August 2016	1st September 2016 to 31st August 2017	1st September 2017 to 31st August 2018
Edlington Pyramid	202	162	213	189	195
<b>Doncaster</b>	<b>3610</b>	<b>2719</b>	<b>3557</b>	<b>3478</b>	<b>3529</b>



## 2i. Social Care Referrals

The data below shows the number of children who are subject to a Social Care Referral and the category they fall in to.

<b>January 2018</b>	<b>Children in Care</b>	<b>Children in Need</b>	<b>Child Protection</b>	<b>February 2018</b>	<b>Children in Care</b>	<b>Children in Need</b>	<b>Child Protection</b>
Edlington Pyramid	25	90	14	Edlington Pyramid	18	98	15
% of Borough wide Total	7%	5%	4%	% of Borough wide Total	5%	5%	4%
<b>Doncaster Total</b>	<b>348</b>	<b>1878</b>	<b>371</b>	<b>Doncaster Total</b>	<b>343</b>	<b>1840</b>	<b>393</b>

### 3. Structure of Learning Provision

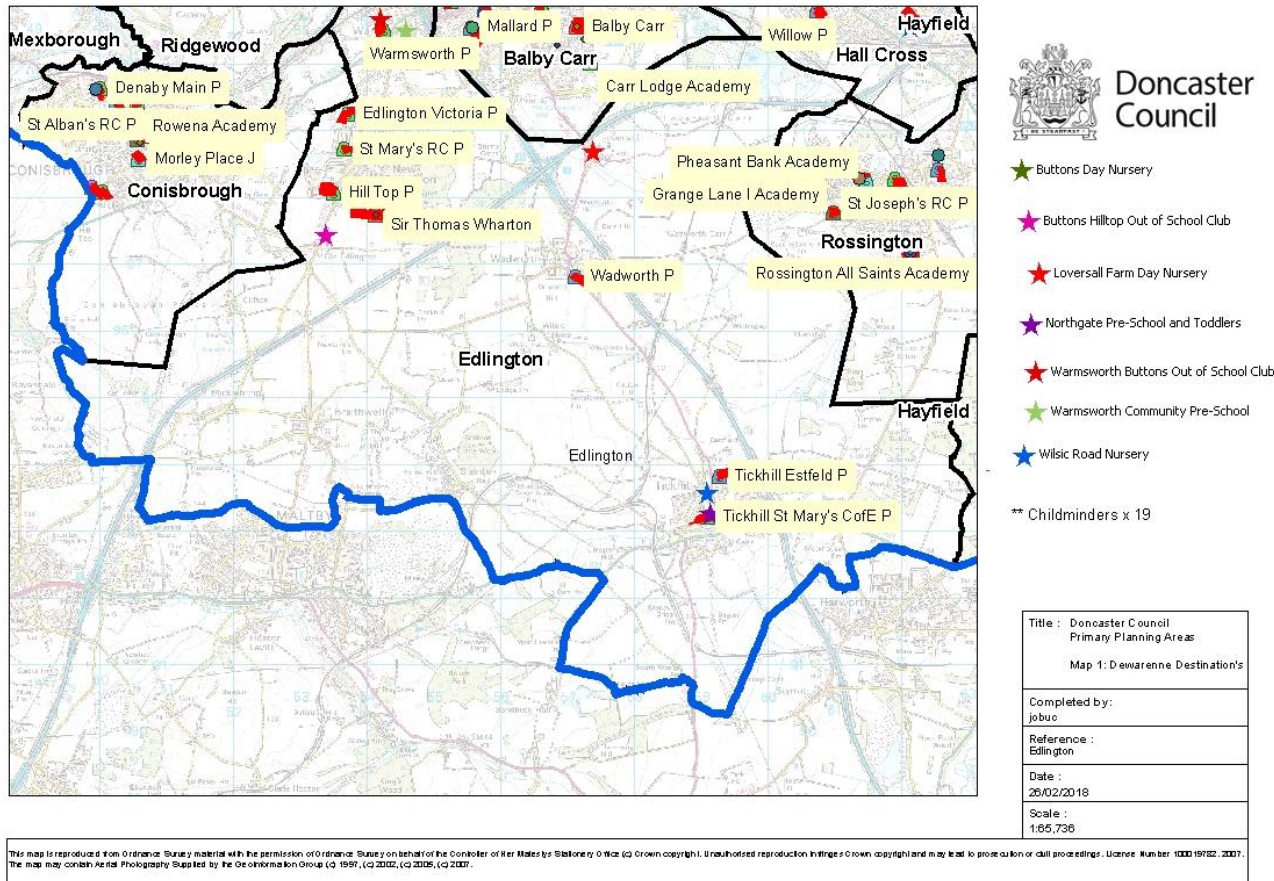
The following pages set out the context of the local provision within the Edlington pyramid. Below is a table showing all the provision by type.

<b>Secondary School</b>	<ul style="list-style-type: none"> <li>• Sir Thomas Wharton Academy</li> </ul>
<b>Infant Schools</b>	<ul style="list-style-type: none"> <li>• None</li> </ul>
<b>Junior Schools</b>	<ul style="list-style-type: none"> <li>• None</li> </ul>
<b>Primary Schools</b>	<ul style="list-style-type: none"> <li>• Edlington Victoria Academy</li> <li>• Hill Top Academy</li> <li>• St Mary's Catholic Primary School</li> <li>• Tickhill Estfeld Primary School</li> <li>• Tickhill St Mary's Church of England Primary and Nursery School</li> <li>• Wadworth Primary School</li> <li>• Warmsworth Primary School</li> </ul>
<b>Special Schools</b>	<ul style="list-style-type: none"> <li>• None</li> </ul>
<b>Alternative Provision (PRU's)</b>	<ul style="list-style-type: none"> <li>• None</li> </ul>
<b>School Nurseries</b>	<ul style="list-style-type: none"> <li>• Edlington Victoria Academy</li> <li>• Hilltop Academy</li> <li>• St Mary's Catholic Primary School</li> <li>• Warmsworth Primary School</li> <li>• Tickhill St Mary's C of E Primary School</li> </ul>
<b>Full Daycare Provider (PVI Sector Nurseries)</b>	<ul style="list-style-type: none"> <li>• Buttons Day Nursery</li> <li>• Loversall Day Nursery</li> <li>• Wilsic Road Day Nursery</li> </ul>
<b>Sessional Care Providers (Pre-School Playgroups)</b>	<ul style="list-style-type: none"> <li>• Warmsworth Community Pre-School</li> </ul>

	<ul style="list-style-type: none"> <li>• Northgate Pre-school and Toddlers</li> </ul>
<b>Out of School Provision (Breakfast Clubs, After School Care and Holiday Schemes)</b>	<ul style="list-style-type: none"> <li>• Sir Thomas Wharton</li> <li>• Wadworth Primary Academy</li> <li>• Warmsworth Primary School</li> <li>• Tickhill Estfeld Primary School</li> <li>• Buttons Out of School</li> </ul>
<b>Childminders</b>	<ul style="list-style-type: none"> <li>• 19 Childminders</li> </ul>

### 3a. Locality of Provision

To help to visualise the local provision the map below shows the geographical location of each provision from both the School / Academy and PVI Sector. The exception is that childminders are not plotted. Although they work to the same Ofsted standards as all childcare provision they operate from their home address and therefore are summarised within the key. The pyramid is 2 square miles in size.



### 3b. Academy Conversions

There has been a drive in recent years for schools to convert to academy status. Academies are independent, state-funded schools, which receive their funding directly from central government, rather than through the local authority.

In Doncaster 54% of schools have converted to academies. This includes all of our secondary schools.

In Edlington 3 schools have converted to academies.

Maintained Schools	Academies
Tickhill Estfeld Primary School	Edlington Victoria Academy
Tickhill St Mary's Church of England Primary and Nursery School	Hill Top Academy
Wadworth Primary School	Sir Thomas Wharton Academy
Warmsworth Primary School	



### 3c. Social Mobility

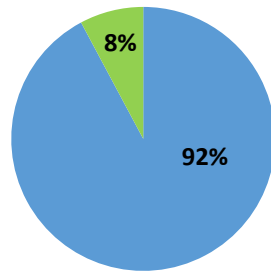
The data below shows the most common moves out of Pyramid schools and their destination school outside of the usual leaving point over a 2 year period for academic years 2015/16 and 2016/17.

School Name	Stable Places	Joined In Year	Left In Year	1 <sup>st</sup> Most Common Destination	2 <sup>nd</sup> Most Common Destination	3 <sup>rd</sup> Most Common Destination
Edlington Victoria Academy	236	65	47	Kirkby Avenue Primary (7)	Intake Primary (3)	Carcroft Primary (3)
Hill Top Academy	400	21	14	Carr Lodge Academy (3)	Scawthorpe Castlehills Primary (3)	Edlington Victoria (2)
St Mary's Catholic School	153	63	33	Hexthorpe Primary (3)	Waverley Primary (2)	Edlington Victoria Primary (2)
Tickhill Estfeld Primary	221	19	13	Carr Lodge Academy (2)	Tickhill St Mary's C ofE Primary (1)	OOA (10)
Tickhill St Mary's C ofE Primary	203	33	33	Carr Lodge Academy (7)	Windhill Primary (2)	Grange Lane Infant School (1)
Wadworth Primary	157	24	20	Carr Lodge Academy (6)	Mexborough Highwoods Primary (2)	Sprotbrough Copley Junior School (1)
Warmsworth Primary	490	30	30	Carr Lodge Academy (4)	Hillside Academy (3)	Conisbrough Ivanhoe Primary Academy (3)
Sir Thomas Wharton Academy	946	53	178	Hall Cross Academy (8)	Rossington All Saints Academy (5)	Balby Carr Academy (4)
<b>Pyramid Total</b>	<b>2,806</b>	<b>308</b>	<b>368</b>			
<b>Doncaster Total</b>	47,157	7517	7248			

\* Schools denoted with an Asterisk identify where a pupil has moved from a Doncaster school to an out of area school then returned to their original Doncaster school.

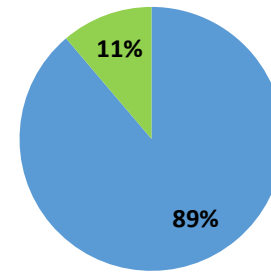
## Primary Movement Within or Outside Pyramid

■ Out of Pyramid ■ Within Pyramid



## Mobility Vs. Stable Secondary Pupils

■ Secondary School Total Stable ■ Secondary School Left



### 3d. English as Other Language (EAL)

Within the Edlington pyramid 6% of the primary pupils and 3% of the secondary pupils are EAL. The Doncaster total shows that 11% of primary pupils and 8% of secondary pupils are EAL, therefore Edlington is below the boroughwide average. The data below shows most common first languages (other than English) within this pyramid compared to boroughwide:

Primary			
Edlington Pyramid		Boroughwide	
Polish	71	Polish	1133
Romanian	8	Romanian	221
Turkish	6	Urdu	195
Lithuanian	5	Kurdish	167
Chinese	5	Slovakian	158

Secondary			
Edlington Pyramid		Boroughwide	
Polish	7	Polish	366
Punjabi	2	Slovakian	108
Romanian	2	Romanian	89
Shona	2	Urdu	87
Thai	2	Punjabi	75

School	EMTAS Support	Languages Supported
Edlington Victoria Academy	No	N/A
Hill Top Academy	No	N/A
St Mary's Catholic School	Yes	Polish
Tickhill Estfeld Primary	No	N/A
Tickhill St Mary's C ofE Primary	No	N/A
Wadworth Primary	No	N/A
Warmsworth Primary	No	N/A
Sir Thomas Wharton Academy	Partial	Annual support with First language exams and languages

### 3e. Admissions

The data below shows the non-catchment children on role and their identified catchment school.

#### Primary (Spring Census 2018)

School	% Attending from out of Catchment	Catchment School	Catchment School	Catchment School	Catchment School	Catchment School
Edlington Victoria Academy	22%	Hill Top Primary (26)	Warmsworth Primary (10)	Mallard Primary (6)	Armthorpe Tranmoor Primary (2)	Castle Academy (2)
Hill Top Academy	46%	Edlington Victoria Primary (106)	Carr Lodge Academy (10)	Mallard Primary (8)	Borderline (7)	Warmsworth Primary (4)
St Mary's Catholic School	VA Schools are boroughwide and do not have an allocated catchment area					
Tickhill Estfeld Primary	40%	Borderline (63)	Wadworth Primary (5)	OOA (4)	Carr Lodge Academy (4)	Windhill Primary (2)
Tickhill St Mary's C ofE Primary	26%	Carr Lodge Academy (12)	OOA (10)	Wadworth Primary (8)	Borderline (7)	Bawtry Mayflower Primary (6)
Wadworth Primary	66%	Carr Lodge Academy (46)	Mallard Primary (16)	Borderline (9)	Woodfield Primary (8)	Waverley Academy (4)
Warmsworth Primary	28%	Mallard Primary (54)	Waverley Academy (40)	Edlington Victoria Primary (35)	Carr Lodge Academy (28)	Castle Academy (19)

**Secondary (Spring Census 2018)**

<b>Catchment School</b>	<b>% Attending from out of Catchment</b>	<b>Catchment School</b>	<b>Catchment School</b>	<b>Catchment School</b>	<b>Catchment School</b>	<b>Catchment School</b>
Sir Thomas Wharton Academy	33%	Balby Carr Academy (220)	De Warenne Academy (44)	Ridgewood School (5)	Outwood Academy Danum (4)	Mexborough School (4)

### 3f. Pupil Absence

Primary															
	2016/17			2015/16			2014/15			2013/14			2012/13		
	Auth	Unauth	Total	Auth	Unauth	Total	Auth	Unauth	Total	Auth	Unauth	Total	Auth	Unauth	Total
Edlington Victoria Academy	2.3	2.2	4.5	1.5	2.1	3.6	2.6	1.7	4.3	3.1	1.3	4.4	4.3	1.0	5.3
Hill Top Academy	2.7	1.2	3.9	2.3	1.0	3.3	2.9	0.9	3.8	2.8	0.8	3.6	4.4	1.0	5.4
St Mary's Catholic	2.7	3.0	5.7	2.4	0.9	3.4	2.6	1.0	3.6	2.9	0.8	3.7	3.6	1.2	4.8
Tickhill Estfeld	2.9	0.5	3.4	2.8	0.3	3.1	2.5	0.4	2.9	2.6	0.2	2.8	3.1	0.2	3.3
Tickhill St Mary's CofE Primary	2.9	0.6	3.5	3.6	0.8	4.4	2.4	0.6	3.1	3.1	0.5	3.7	4.9	0.6	5.4
Wadworth Primary	2.5	0.4	2.9	2.0	0.2	2.2	2.7	0.4	3.2	2.7	0.5	3.2	3.1	0.2	3.3
Warmsworth Primary	2.3	0.6	2.9	2.5	0.4	2.9	2.3	0.3	2.7	2.2	0.3	2.6	3.0	0.2	3.3
<b>Edlington</b>	<b>2.6%</b>	<b>1.1%</b>	<b>3.6%</b>	<b>2.4%</b>	<b>0.8%</b>	<b>3.2%</b>	<b>2.6%</b>	<b>0.7%</b>	<b>3.3%</b>	<b>2.7%</b>	<b>0.6%</b>	<b>3.3%</b>	<b>3.7%</b>	<b>0.6%</b>	<b>4.3%</b>
<b>Doncaster</b>	<b>3.0%</b>	<b>1.2%</b>	<b>4.2%</b>	<b>3.0%</b>	<b>1.1%</b>	<b>4.1%</b>	<b>3.0%</b>	<b>1.1%</b>	<b>4.1%</b>	<b>3.1%</b>	<b>0.9%</b>	<b>4.0%</b>	<b>4.2%</b>	<b>1.0%</b>	<b>5.1%</b>
<b>National</b>	<b>3.1%</b>	<b>0.9%</b>	<b>4.0%</b>	<b>3.2%</b>	<b>0.8%</b>	<b>3.9%</b>	<b>3.3%</b>	<b>0.7%</b>	<b>4.0%</b>	<b>3.2%</b>	<b>0.7%</b>	<b>3.9%</b>	<b>4.1%</b>	<b>0.7%</b>	<b>4.8%</b>

The table below shows a 5 year trend for authorised and unauthorised absences by Primary and Secondary.

Secondary															
	2016/17			2015/16			2014/15			2013/14			2012/13		
	Auth	Unauth	Total	Auth	Unauth	Total	Auth	Unauth	Total	Auth	Unauth	Total	Auth	Unauth	Total
<b>Edlington</b>	5.6	3.6	2.0	5.1	3.4	1.7	4.8	3.3	1.5	5.2	3.5	1.6	5.6	4.3	1.3
<b>Doncaster</b>	4.1%	2.5%	6.6%	3.8%	2.1%	5.9%	3.6%	2.0%	5.7%	3.7%	1.9%	5.6%	4.6%	1.9%	6.5%
<b>National</b>	3.8%	1.3%	5.2%	3.8%	1.2%	5.0%	4.0%	1.2%	5.2%	3.9%	1.2%	5.1%	4.6%	1.2%	5.8%

The data shows that absences overall are below the Doncaster and National average, however, unauthorised absences are higher than both the Doncaster and National average.

### 3g. Exclusions

This data shows there are no permanent exclusions in Edlington Pyramid.

School Name	Number of Permanent Exclusions 2017/18
N/A	N/A
<b>Pyramid Total</b>	<b>0</b>
<b>Doncaster Total</b>	<b>71</b>

## 4. Pupil Place Planning

### 4a. Housing Growth and S106 Contributions

The annual SCAP return requires each local authority to aggregate birth and housing growth data into pupil yields and pupil projections alongside actual pupil numbers. The birth and housing data can, for interested parties, be shown separately. The following represents this combined data for the Edlington area from the 2017 SCAP return to DfE.

The housing element projects the number of additional children from the proposed developments using this formula:

- 4 to 10 year old children (Year groups R to 6) = 21 children (3 per year group) per 100 planned dwellings
- 11 to 16 year old children (Year groups 7 to 11) = 15 children (3 per year group) per 100 planned dwellings

### Current applications contributing to housing growth in the Edlington Pyramid (as at Sept 17)

#### Edlington Victoria Primary

Application Decision	Development	Proposal	No. of Dwellings Proposed
Granted	Land of the former cinema, Edlington Lane	Erection of 16 apartments	16
Granted subject to S106	Site at Former Yorkshire Main Colliery, Broomhouse Lane	Residential Dev up to 375 houses and public house with associated works	375
<b>Total</b>			<b>391</b>



### Hill Top Primary

Application Decision	Development	Proposal	No. of Dwellings Proposed
Granted	Land North of Stubbins Hill	Erection of 387 Dwellings- Erection of 374 dwellings (comprising of 261 private sale units and 113 affordable units)	374
Granted	Thompson Avenue/Dixon Road	Original application was erection of 173 Dwellings- Erection of 173 homes to include an extra care development of 64 apartments and 22 bungalows (86 affordable units) with associated communal facilities. (Without compliance with conditions 2 (Amended Plans) and 3 (In accord with plans and specification) of planning application 11/03419/4FULM granted on 15.03.2012)   Thompson Avenue/Dixon Road Edlington Doncaster	86
<b>Total</b>			<b>460</b>

Source: School Organisation Team - Projected Housing Growth (inc. SCAP 2017)

### Pyramid Grand Totals

Locality	Number of Proposed Developments
<b>Pyramid Total</b>	<b>851</b>

**Final Overview of Status**

<b>Catchment Primary Schools</b>	<b>Application Decision</b>
2 Schools Affected	<ul style="list-style-type: none"><li>• 3 Granted</li><li>• 1 Granted subject to section 106</li></ul>

## 5. School Capacity (SCAP)

Below are the projected school places which were submitted in the 2018 SCAP survey. Primary Places are projected for 5 years including the current year due to the children starting school at 5 years, and secondary places are projected beyond this point due to the age of the children. The row titled CAP shows the capacity within each year group. Where cells are highlighted red, this is due to the projected capacity exceeding the actual places available.

### 5a. Primary School Projections

YEAR	PAN	CAP	R	PAN-NOR	1	PAN-NOR	2	PAN-NOR	3	PAN-NOR	4	PAN-NOR	5	PAN-NOR	6	PAN-NOR	SUB	BAL
<b>Hill Top Primary</b>																		
2018/19	50	350	51	-1	52	-2	50	0	49	1	50	0	47	3	49	1	348	2
2019/20	50	350	38	12	54	-4	55	-5	53	-3	52	-2	53	-3	50	0	355	-5
2020/21	50	350	48	2	41	9	57	-7	58	-8	56	-6	55	-5	56	-6	371	-21
2021/22	50	350	38	12	51	-1	44	6	60	-10	61	-11	59	-9	58	-8	371	-21
2022/23	50	350	40	10	42	8	55	-5	48	2	64	-14	65	-15	63	-13	377	-27
<b>Edlington Victoria Primary</b>																		
2018/19	60	420	39	21	32	28	35	25	34	26	31	29	31	29	39	21	241	179
2019/20	60	420	37	23	39	21	32	28	35	25	34	26	31	29	31	29	239	181
2020/21	60	420	31	29	37	23	39	21	32	28	35	25	34	26	31	29	239	181
2021/22	60	420	29	31	31	29	37	23	39	21	32	28	35	25	34	26	237	183
2022/23	60	420	35	25	29	31	31	29	37	23	39	21	32	28	35	25	238	182
<b>Tickhill St Mary's Cof E Primary and Nursery School</b>																		
2018/19	40	280	26	14	26	14	38	2	28	12	27	13	26	14	29	11	200	80
2019/20	40	280	29	11	26	14	26	14	38	2	28	12	27	13	26	14	200	80
2020/21	40	280	18	22	29	11	26	14	26	14	38	2	28	12	27	13	192	88
2021/22	40	280	27	13	18	22	29	11	26	14	26	14	38	2	28	12	192	88
2022/23	40	280	17	23	27	13	18	22	29	11	26	14	26	14	38	2	181	99

YEAR	PAN	CAP	R	PAN-NOR	1	PAN-NOR	2	PAN-NOR	3	PAN-NOR	4	PAN-NOR	5	PAN-NOR	6	PAN-NOR	SUB	BAL
<b>Warmsworth Primary</b>																		
2018/19	60	420	60	0	60	0	60	0	56	4	58	2	60	0	60	0	414	6
2019/20	60	420	43	17	60	0	60	0	60	0	56	4	58	2	60	0	397	23
2020/21	60	420	63	-3	43	17	60	0	60	0	60	0	56	4	58	2	400	20
2021/22	60	420	51	9	63	-3	43	17	60	0	60	0	60	0	56	4	393	27
2022/23	60	420	40	20	51	9	63	-3	43	17	60	0	60	0	60	0	377	43
<b>Tickhill Estfeld Primary</b>																		
2018/19	30	210	30	0	27	3	30	0	30	0	32	-2	33	-3	31	-1	213	-3
2019/20	30	210	22	8	30	0	27	3	30	0	30	0	32	-2	33	-3	204	6
2020/21	30	210	16	14	22	8	30	0	27	3	30	0	30	0	32	-2	187	23
2021/22	30	210	20	10	16	14	22	8	30	0	27	3	30	0	30	0	175	35
2022/23	30	210	17	13	20	10	16	14	22	8	30	0	27	3	30	0	162	48
<b>Wadworth Primary</b>																		
2018/19	30	210	18	12	17	13	11	19	17	13	30	0	16	14	28	2	137	73
2019/20	30	210	19	11	18	12	17	13	11	19	17	13	30	0	16	14	128	82
2020/21	30	210	10	20	19	11	18	12	17	13	11	19	17	13	30	0	122	88
2021/22	30	210	7	23	10	20	19	11	18	12	17	13	11	19	17	13	99	111
2022/23	30	210	17	13	7	23	10	20	19	11	18	12	17	13	11	19	99	111
<b>St Mary's Catholic Primary</b>																		
2018/19	30	210	21	9	28	2	28	2	26	4	27	3	17	13	20	10	167	43
2019/20	30	210	21	9	21	9	28	2	28	2	26	4	27	3	17	13	168	42
2020/21	30	210	20	10	21	9	21	9	28	2	28	2	26	4	27	3	171	39
2021/22	30	210	19	11	20	10	21	9	21	9	28	2	28	2	26	4	163	47
2022/23	30	210	19	11	19	11	20	10	21	9	21	9	28	2	28	2	156	54

## 5b. Primary Summary

YEAR	PAN	CAP	R	PAN-NOR	1	PAN-NOR	2	PAN-NOR	3	PAN-NOR	4	PAN-NOR	5	PAN-NOR	6	PAN-NOR	SUB	BAL
2018/19	300	2100	245	55	242	58	252	48	240	60	255	45	230	70	256	44	1720	380
2019/20	300	2100	209	91	248	52	245	55	255	45	243	57	258	42	233	67	1691	409
2020/21	300	2100	206	94	212	88	251	49	248	52	258	42	246	54	261	39	1682	418
2021/22	300	2100	191	109	209	91	215	85	254	46	251	49	261	39	249	51	1630	470
2022/23	300	2100	185	115	195	105	213	87	219	81	258	42	255	45	265	35	1590	510

## Primary Overview

Primary data shows that although there are particular clusters of shortfalls overall across the pyramid, sufficient places remain available.

## 5c. Secondary School Projections

### Sir Thomas Wharton Academy

YEAR	CAP	ALL CAP	7	PAN-NOR	8	PAN-NOR	9	PAN-NOR	10	PAN-NOR	11	PAN-NOR	SUB	BAL	12	13	14	6TH
2018/19	210	1050	191	19	191	19	155	55	154	56	170	40	861	189	53	18	-	71
2019/20	210	1050	206	4	194	16	194	16	158	52	157	53	909	141	64	38	-	102
2020/21	210	1050	186	24	209	1	197	13	197	13	161	49	950	100	59	46	-	105
2021/22	210	1050	199	11	189	21	212	-2	200	10	200	10	1000	50	61	42	-	103
2022/23	210	1050	188	22	203	7	193	17	216	-6	204	6	1004	46	76	44	-	120
2023/24	210	1050	197	13	192	18	207	3	197	13	220	-10	1013	37	77	54	-	131
2024/25	210	1050	185	25	198	12	193	17	208	2	198	12	982	68	83	55	-	138
2025/26	210	1050	185	25	186	24	199	11	194	16	209	1	973	77	75	59	-	134

## Contributing Factors

### Astrea Academy Woodfields (Balby Carr)

YEAR	CAP	ALL CAP	7	PAN-NOR	8	PAN-NOR	9	PAN-NOR	10	PAN-NOR	11	PAN-NOR	SUB	BAL	12	13	14	6TH
2018/1	210	1050	155	55	185	25	171	39	150	60	164	46	825	225	93	39	-	132
2019/2	210	1050	194	16	157	53	187	23	173	37	150	60	861	189	90	70	-	160
2020/2	210	1050	218	-8	210	0	159	51	189	21	173	37	949	101	83	68	-	151
2021/2	210	1050	193	17	220	-10	212	-2	161	49	189	21	975	75	95	62	-	157
2022/2	210	1050	227	-17	195	15	222	-12	214	-4	155	55	1013	37	104	71	-	175
2023/2	210	1050	225	-15	229	-19	197	13	224	-14	214	-4	1089	-39	85	78	-	163
2024/2	210	1050	207	3	225	-15	229	-19	197	13	224	-14	1082	-32	118	64	-	182
2025/2	210	1050	207	3	207	3	225	-15	229	-19	197	13	1065	-15	123	89	-	212

### Cluster Total

YEAR	CAP	ALL CAP	7	PAN-NOR	8	PAN-NOR	9	PAN-NOR	10	PAN-NOR	11	PAN-NOR	SUB	BAL	12	13	14	6TH
2018/1	420	2100	346	74	376	44	326	94	304	116	334	86	1686	414	146	57	-	203
2019/2	420	2100	400	20	351	69	381	39	331	89	307	113	1770	330	154	108	-	262
2020/2	420	2100	404	16	419	1	356	64	386	34	334	86	1899	201	142	114	-	256
2021/2	420	2100	392	28	409	11	424	-4	361	59	389	31	1975	125	156	104	-	260
2022/2	420	2100	415	5	398	22	415	5	430	-10	359	61	2017	83	180	115	-	295
2023/2	420	2100	422	-2	421	-1	404	16	421	-1	434	-14	2102	-2	162	132	-	294
2024/2	420	2100	392	28	423	-3	422	-2	405	15	422	-2	2064	36	201	119	-	320
2025/2	420	2100	392	28	393	27	424	-4	423	-3	406	14	2038	62	198	148	-	346

### Secondary Overview

Secondary data shows a possible shortfall from year 2020/21 from year 9 and onwards, neighbouring Astrea Academy Woodfields shortfalls could also impact on Sir Thomas Wharton Academy.

### 5d. Childcare Places & Availability

The table below shows the occupancy levels and the availability of the childcare provision for the Summer Term 2018.

School, PVI and Childminder Provision	0 to 1 Yrs			2 Yrs			3 & 4 Yrs			5 to 10 Yrs			11 to 14 Yrs			Total			VACANCY RATE	Availability					
	PLACES	NOR (FTE)	BALANCE	PLACES	NOR (FTE)	BALANCE	PLACES	NOR (FTE)	BALANCE	PLACES	NOR (FTE)	BALANCE	PLACES	NOR (FTE)	BALANCE	PLACES	NOR (FTE)	BALANCE		Annual	Before 8am	8am to 6pm	After 6pm	Weekends	Shift Pattern
Edlington Victoria Academy							26	14	12							26	14	12	46%	TT		1			
Hill Top Academy							26	26	0							26	26	0	0%	TT		1			
St Mary's Catholic Primary							13	13	0							13	13	0	0%	TT		1			
Tickhill St Mary's C of E Primary							26	16	10							26	16	10	38%	TT		1			
Warmsworth Primary							26	25	1							26	25	1	4%	TT		1			
<b>School Totals</b>							<b>117</b>	<b>94</b>	<b>23</b>							<b>117</b>	<b>94</b>	<b>23</b>	<b>20%</b>	-	<b>0</b>	<b>5</b>	<b>0</b>	<b>0</b>	<b>0</b>
Wilsic Road Day Nursery	6	6	0	12	12	0	12	12	0							30	30	0	0%	AY	1	1			
Buttons Day Nursery Ltd	12	9	3	16	13	3	32	26	6							60	48	12	20%	AY	1	1			
Loversall Farm Day Nursery	12	11	1	16	12	4	32	30	2							60	53	7	12%	AY	1	1			
Northgate Pre-School				12	8	4	30	28	2							42	36	6	14%	TT		1			
Warmsworth Community Preschool				28	14	14	40	34	6							68	48	20	29%	TT		1			
<b>PVI Totals</b>	<b>30</b>	<b>26</b>	<b>4</b>	<b>84</b>	<b>59</b>	<b>25</b>	<b>146</b>	<b>130</b>	<b>16</b>						<b>260</b>	<b>215</b>	<b>45</b>	<b>17%</b>	-	<b>3</b>	<b>5</b>	<b>0</b>	<b>0</b>	<b>0</b>	
<b>20 x Childminder</b>	<b>15</b>	<b>10</b>	<b>5</b>	<b>13</b>	<b>7</b>	<b>6</b>	<b>25</b>	<b>20</b>	<b>5</b>	<b>121</b>	<b>74</b>	<b>47</b>	<b>12</b>	<b>6</b>	<b>6</b>	<b>186</b>	<b>117</b>	<b>69</b>	<b>37%</b>	-	<b>15</b>	<b>15</b>	<b>5</b>	<b>0</b>	<b>4</b>
<b>All Sector Total</b>	<b>45</b>	<b>36</b>	<b>9</b>	<b>97</b>	<b>66</b>	<b>31</b>	<b>288</b>	<b>244</b>	<b>44</b>	<b>121</b>	<b>74</b>	<b>47</b>	<b>12</b>	<b>6</b>	<b>6</b>	<b>563</b>	<b>426</b>	<b>137</b>	<b>24%</b>	-	<b>18</b>	<b>25</b>	<b>5</b>	<b>0</b>	<b>4</b>

AY (All Year), TT (Term Time Only), SH (School Holidays Only).

The data shows that 24% of the vacancies overall remain vacant within the school, PVI and childminder provision. The data shows that there are childminders who are available after 6pm and who can accommodate shift patterns.

## School based and PVI Sector Breakfast Childcare Provision

School & PVI Breakfast Provision	0 to 1 Yrs			2 Yrs			3 & 4 Yrs			5 to 10 Yrs			11 to 14 Yrs			Total			VACANCY RATE	Availability					
	PLACES	NOR (FTE)	BALANCE	PLACES	NOR (FTE)	BALANCE	PLACES	NOR (FTE)	BALANCE	PLACES	NOR (FTE)	BALANCE	PLACES	NOR (FTE)	BALANCE	PLACES	NOR (FTE)	BALANCE		Annual	Before 8am	8am to 6pm	After 6pm	Weekends	Shift Patter
Sir Thomas Wharton Academy												25	10	15	25	10	15	60%	TT		1				
Wadworth Primary							10	5	5	50	41	9				60	46	14	23%	TT		1			
<b>School Totals</b>							<b>10</b>	<b>5</b>	<b>5</b>	<b>50</b>	<b>41</b>	<b>9</b>	<b>25</b>	<b>10</b>	<b>15</b>	<b>85</b>	<b>56</b>	<b>29</b>	<b>34%</b>	-	<b>0</b>	<b>2</b>	<b>0</b>	<b>0</b>	<b>0</b>
Buttons Out of School Club Ltd - Edlington							24	12	12	24	12	12				48	24	24	50%	TT	1	1			
Buttons Out of School Club Ltd - Warmsworth							30	24	6	30	24	6				60	48	12	20%	TT	1	1			
<b>PVI Sector Totals</b>							<b>54</b>	<b>36</b>	<b>18</b>	<b>54</b>	<b>36</b>	<b>18</b>	<b>0</b>	<b>0</b>	<b>0</b>	<b>108</b>	<b>72</b>	<b>36</b>	<b>33%</b>	-	<b>2</b>	<b>2</b>	<b>0</b>	<b>0</b>	<b>0</b>
<b>All Sector Totals</b>							<b>64</b>	<b>41</b>	<b>23</b>	<b>104</b>	<b>77</b>	<b>27</b>	<b>25</b>	<b>10</b>	<b>15</b>	<b>193</b>	<b>128</b>	<b>65</b>	<b>34%</b>	-	<b>2</b>	<b>4</b>	<b>0</b>	<b>0</b>	<b>0</b>

AY (All Year), TT (Term Time Only), SH (School Holidays Only).

The data shows that 34% of the vacancies overall remain vacant for School & PVI Breakfast Provision, allowing flexibility for any increase in requirements. The data also shows that there are vacancies before 8am.



## School based and PVI Sector After School Childcare Provision

School & PVI After School Provision	0 to 1 Yrs			2 Yrs			3 & 4 Yrs			5 to 10 Yrs			11 to 14 Yrs			Total			VACANCY RATE	Availability				
	PLACES	NOR (FTE)	BALANCE	PLACES	NOR (FTE)	BALANCE	PLACES	NOR (FTE)	BALANCE	PLACES	NOR (FTE)	BALANCE	PLACES	NOR (FTE)	BALANCE	PLACES	NOR (FTE)	BALANCE		Annual	Before 8am	8am to 6pm	After 6pm	Weekends
Sir Thomas Wharton Academy												25	20	5	25	20	5	20%	TT		1			
Tickhill Estfeld Primary School									40	21	19				40	21	19	48%	TT		1			
Wadworth Primary				18	18	0	30	26	4						48	44	4	8%	TT		1			
Warmsworth Primary									27	25	2				27	25	2	7%	TT		1			
<b>School Totals</b>				18	18	0	97	72	25	25	20	5	140	110	30	21%	-	0	4	0	0	0		
Buttons Out of School Club Ltd - Edlington							24	12	12	24	12	12			48	24	24	50%	TT		1			
Buttons Out of School Club Ltd - Warmsworth							30	24	6	30	24	6			60	48	12	20%	TT		1			
<b>PVI Sector Totals</b>				54	36	18	54	36	18	0	0	0	108	72	36	33%	-	0	2	0	0	0		
<b>All Sector Totals</b>				72	54	18	151	108	43	25	20	5	248	182	66	27%	-	0	6	0	0	0		

AY (All Year), TT (Term Time Only), SH (School Holidays Only).

The data shows that 27% of the vacancies overall remain vacant for the school & PVI sector. The data also shows that there are vacancies available for most age groups.

### School based and PVI Sector Holiday Childcare Provision

School & PVI Holiday Provision	0 to 1 Yrs			2 Yrs			3 & 4 Yrs			5 to 10 Yrs			11 to 14 Yrs			Total			VACANCY RATE	Availability					
	PLACES	NOR (FTE)	BALANCE	PLACES	NOR (FTE)	BALANCE	PLACES	NOR (FTE)	BALANCE	PLACES	NOR (FTE)	BALANCE	PLACES	NOR (FTE)	BALANCE	PLACES	NOR (FTE)	BALANCE		Annual	Before 8am	8am to 6pm	After 6pm	Weekends	Shift Pattern
<b>School Totals</b>																									
Buttons Out of School Club Ltd - Warmsworth				30	0	30	30	0	30	30	0	30	90	0	90	100%	SH	1	1						
<b>PVI Sector Totals</b>				<b>30</b>	<b>0</b>	<b>30</b>	<b>30</b>	<b>0</b>	<b>30</b>	<b>30</b>	<b>0</b>	<b>30</b>	<b>90</b>	<b>0</b>	<b>90</b>	<b>100%</b>	-	<b>1</b>	<b>1</b>	<b>0</b>	<b>0</b>	<b>0</b>	<b>0</b>		
<b>All Sector Totals</b>				<b>30</b>	<b>0</b>	<b>30</b>	<b>30</b>	<b>0</b>	<b>30</b>	<b>30</b>	<b>0</b>	<b>30</b>	<b>90</b>	<b>0</b>	<b>90</b>	<b>100%</b>	-	<b>1</b>	<b>1</b>	<b>0</b>	<b>0</b>	<b>0</b>	<b>0</b>		

AY (All Year), TT (Term Time Only), SH (School Holidays Only).

The data shows that holiday provision in this pyramid is very limited in this area but there is a 100% vacancy rate which suggests that there is no demand for holiday childcare in this area.

## 5e. Childcare Projections

This table below measures the birth rates of children to anticipate the future projected need for childcare places within this pyramid. This data shows the anticipated projected place requirements for the spring and summer 2018 terms. This information is displayed using a red, amber green (RAG rating)

- **Green** depicts sufficient available places
- **Amber** depicts the potential for a shortfall of places if demand increases
- **Red** shows an identified need where supply does not meet local demand.

### Summary of Projected Places Spring 2018

Spring Term 2018	0 and 1 Years	2 Years	3 and 4 Years	5 to 10 Years	11 to 14 Years
Edlington Pyramid	Green	Green	Green	Amber	Amber
<b>Doncaster Total</b>	Green	Green	Green	Green	Green

### Summary of Projected Places Summer 2018

Summer Term 2018	0 and 1 Years	2 Years	3 and 4 Years	5 to 10 Years	11 to 14 Years
Edlington Pyramid	Green	Green	Green	Amber	Amber
<b>Doncaster Total</b>	Green	Green	Green	Green	Green

Edlington projections show that there is a potential for a shortfall of places for children aged between 5 to 14 years. This supports the outcome of the gap analysis where more flexibility in provision is required around childcare provision after 6pm and on weekends. We will continue to monitor this over the coming terms.

On a boroughwide basis early indications of birth vs previous occupancy rates show that there are a sufficient number of places available for all ages at the moment.

### 5f. Capital Projects

There are currently no capital projects in place for the Edlington Pyramid.

School / Academy Projects	Status
N/A	

PVI Sector Projects	Status
N/A	

Safeguarding and Access Projects		
School / Academy	Description of Project	Status
N/A		

### 5g. SEND Provision

This data shows the number of pupils identified as SEND per school, what proportion of the total cohort this represents and their SEND status.

School Name	Number of SEND Pupils	% of Total Cohort	Education, Health and Care Plan	SEN Support	Statement of Special Needs
Edlington Victoria Academy	78	30	3	74	1
Hill Top Academy	64	16	4	58	2
Warmsworth Primary School	65	14	8	56	1
Tickhill Estfeld Primary School	6	3	0	6	6
Tickhill St Mary's CE Primary & Nursery School	15	7	1	14	15
Wadworth Primary School	18	12	0	18	18
Sir Thomas Wharton Academy	159	18	9	149	1
<b>Pyramid Total</b>	<b>405</b>	<b>16%</b>	<b>25</b>	<b>375</b>	<b>5</b>
<b>Doncaster Total</b>	<b>6668</b>	<b>16%</b>	<b>816</b>	<b>5486</b>	<b>366</b>

- There were a total of 1247 children / young people living in Doncaster with a special educational need or disability aged 0 to 19 years old registered with Together Information Exchange (TIE), at September 2017. This shows an increase of 158 children / young people since 2015.
- At October 2017, there were a total of 131 children known to the Pre-School Inclusion Team living in Doncaster with a special educational need or disability aged 0 to 5 years old.
- At Summer 2017 there were 71 Ofsted registered group childcare providers and 213 childminders on the Local Authority Directory registered to provide the free early years entitlement. All have to meet the requirements of the SEN Code of

Practice and Disability Discrimination Act requirements. Three Ofsted registered group providers are designated as “enhanced provisions”, these are within Wheatley, Intake & Belle Vue and Adwick.

- A specialist provision for pre-school children with SEND is based within the Central Children’s Centre. The setting is registered with Ofsted and offers sessions for funded 2, 3 & 4 year old children.
- There were a total of 513 children educated within schools that accessed support through an Education, Health & Care Plan. An additional 5762 children had SEN support or a statement, as reported at the May Schools Census 2017.
- There are five special schools within Doncaster. In the Summer Term 2017 School Childcare data collection, the following information was provided regarding extended services outside of the school day.

<b>Pyramid</b>	<b>Name of School</b>	<b>Age range</b>	<b>Type of provision offered</b>
<b>Adwick</b>	Northridge Community School	3 to 19	Breakfast and After school
<b>Ridgewood</b>	Stone Hill School	7 to 16	Breakfast
<b>Conisbrough</b>	Pennine View School	7 to 16	No provision
<b>Hatfield</b>	Coppice School	3 to 19	After school
<b>Danum</b>	Heatherwood School	3 to 19	No provision

A new special school for communication and interaction special educational needs is to be established in Doncaster.

The school will primarily be for children and young people with Autism Spectrum Disorder, specifically high functioning ASD and Asperger’s. This cohort may also have social, emotional and mental health needs and specific learning difficulties.

Working with the Department for Education, the new school is envisaged to be on the Balby Enterprise Park site. This school would have places for 100 children and young people, 80 of which would be filled by the council, with the remaining 20 offered to neighbouring authorities.

The school will be closely associated with another secondary school to enable pupils to access a mainstream curriculum where this is appropriate. The development will take place as part of the programme creating 1,600 new special free school places across England, made up of a total of 19 new schools.

## 5h. Childcare Costs

The average costs are indicated across the different Ofsted registered childcare types in the table below. As the opening times for day nurseries and childminders can vary, the weekly costs are based on average opening hours of 8am to 6pm. Breakfast and after-school are grouped within 'out of school' costs in line with the Yorkshire and Humber format to allow an easy comparison. This table shows the average costs of childcare for this pyramid in comparison to boroughwide and Yorkshire and Humber averages.

Pyramid	Childminder	Full Daycare	Sessional Care	Out of School Childcare		Holiday P/scheme
	Average Per Day	Average Per Week	Average Per Session	Average Per Session		Average Per Day
				Before School	After School	
Edlington	£33.86	£206.67	£13.75	£4.00	£8.50	£22.50
Doncaster	£33.83	£183.82	£13.36	£5.94	£8.98	£26.09
Yorkshire and Humber*	£38.00	£204.96	Not Known	Not Known	£10.96	£25.14

Average childcare costs across the Edlington pyramid area indicate:

- Childminder costs are comparable to the Doncaster average, but are substantially lower than the Yorkshire & Humber average.
- Average Day Nurseries (Full Daycare) costs are higher than the Doncaster and Yorkshire & Humber average.
- Sessional care costs for Edlington are comparable to the Doncaster average. There are no Yorkshire and Humber costs to compare with.
- Out of school childcare for before school is lower than the Doncaster average and after school care is very similar. There are no costs to compare with for the Yorkshire & Humber 'before school childcare', but after school care is significantly higher.
- The costs for holiday playscheme are lower than both the Doncaster and Yorkshire & Humber averages.

School childcare costs - The range of costs submitted by the schools in this area can vary a great deal therefore we cannot calculate an average cost as this may not be a true reflection. It is recommended to ascertain the service and actual cost for a particular school, contact the Doncaster Families Information Service or the school directly.

## 6. Early Education Funding

### 6a. 2 Year Old Early Education

#### Eligibility Criteria

The provision of early education for up to 15 hours per week for eligible 2 year olds starting the term after their 2<sup>nd</sup> birthday. Families must be in receipt of one or more of the following:

- Income Support
- Income-based Jobseeker's Allowance (JSA)
- Income-related Employment and Support Allowance (ESA)
- Support through Part 6 of the Immigration and Asylum Act
- Have an annual household income under £16,190 and claim Child Tax Credit and / or Working Tax Credit
- Guaranteed Element of State Pension Credit
- The Working Tax Credit 4-week run on (the payment you get when you stop qualifying for Working Tax Credit)
- Universal Credit

Children are also entitled to a place if:

- Your child is looked after by the local council
- Your child has a current statement of special educational needs (SEN) or an education, health and care plan
- Your family is in receipt of Disability Living Allowance for the child
- A child who has left care through special guardianship order, child arrangement order or adoption order

#### 2YO Take Up (Boroughwide)

Autumn 2017	Spring 2018	Summer 2018
80%	75%	80%



### 6b. 3 and 4 Year Old Early Education (Universal)

#### Eligibility Criteria

This is an entitlement for all children starting the term following their third birthday for up to 15 hours per week.

#### Universal Entitlement Take Up

##### 3 and 4 Year Old Universal (Boroughwide)

Autumn 2017	Spring 2018	Summer 2018
92%	98%	98%

## 6c. 30 Hours Free Childcare for Eligible 3 and 4 Year Olds

### Eligibility Criteria

Eligibility for working parents includes: employed, self-employed and workers on a zero hour's contract. To take up the 30 hours of free childcare families need to meet all the following criteria:

- Each parent earns less than £100,000 per year
- Both parents are working and in a lone parent family the sole parent must work
- Each parent works a minimum of 16 hours a week or earns on average a weekly minimum amount that is equivalent to 16 hours a week at either the National Minimum Wage or National Living Wage, for example, £120 a week based on National Living Wage

There are exceptions to both parents having to work. Families where one parent does not work (or neither parent works) will not usually be entitled to the 15 hours extended entitlement; however, they will be eligible where:

- both parents are employed but one (or both parents) is temporarily away from the workplace on: parental, maternity or paternity leave; adoption leave; or on statutory sick pay
- one parent is employed and one parent:
  - has substantial caring responsibilities based on specific benefits received for caring
  - is disabled or incapacitated based on receipt of specific benefits

### Take Up

30 hours early education came into force from September 2017, take up information can be seen in the table below.

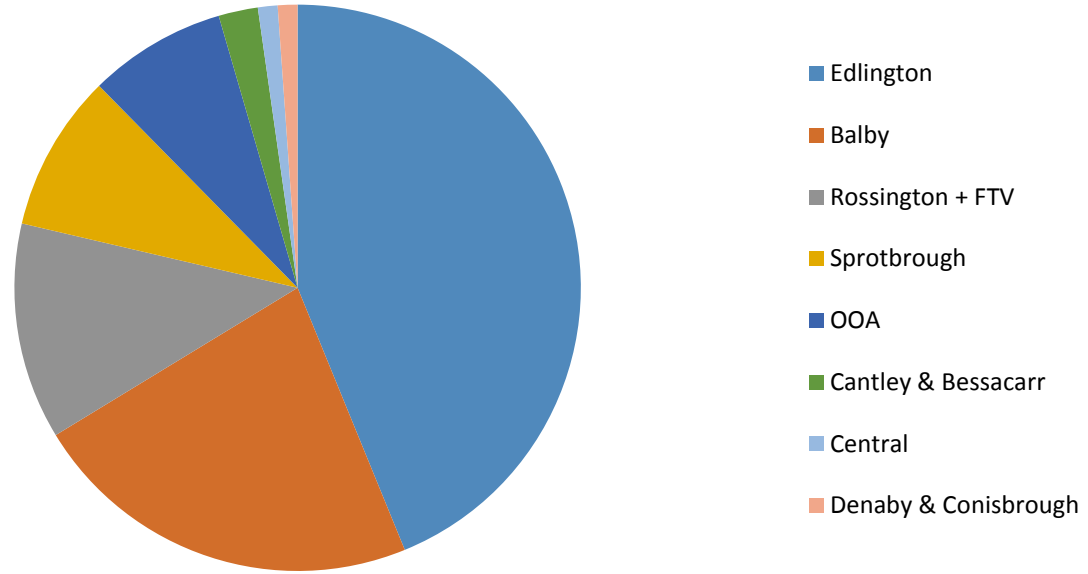
#### 30 Hours (Boroughwide)

Autumn 2017	Spring 2018	Summer 2018
78%	79%	76%

We have assessed where families who access their additional hours and their home locality, the data can be seen below

<b>Edlington</b>	<b>School</b>	<b>PVI</b>	<b>Total</b>	<b>%</b>
<b>Edlington</b>	<b>0</b>	<b>39</b>	<b>39</b>	<b>44</b>
<b>Balby</b>	<b>0</b>	<b>20</b>	<b>20</b>	<b>22</b>
<b>Rossington + FTV</b>	<b>0</b>	<b>11</b>	<b>11</b>	<b>12</b>
<b>Sprotbrough</b>	<b>0</b>	<b>8</b>	<b>8</b>	<b>9</b>
<b>OOA</b>	<b>0</b>	<b>7</b>	<b>7</b>	<b>8</b>
<b>Cantley &amp; Bessacarr</b>	<b>0</b>	<b>2</b>	<b>2</b>	<b>2</b>
<b>Central</b>	<b>0</b>	<b>1</b>	<b>1</b>	<b>1</b>
<b>Denaby &amp; Conisbrough</b>	<b>0</b>	<b>1</b>	<b>1</b>	<b>1</b>
<b>TOTAL</b>	<b>0</b>	<b>89</b>	<b>89</b>	<b>100</b>

## Home Locality of Families Accessing Additional Hours Within Pyramid



### 6d. Future Plans

We anticipate an increase in take up over the coming terms. As part of our sufficiency strategy we have applied a methodology to predict future place needs. The following table shows the pyramid demand by term with potential maximum vs. minimum take up and any potential shortfall of places. This data is based on the combined need for places for both 30 hours and universal entitlement.

This information is displayed using a red, amber green (RAG rating)

- **Green** depicts sufficient available places
- **Amber** depicts the potential for a shortfall of places if demand increases
- **Red** shows an identified need where supply does not meet local demand.

Sub Locality Area	Spring 18		Summer 18	
	MAX (100% Take Up)	MIN (Current Universal Take Up)	MAX (100% Take Up)	MIN (Current Universal Take Up)
Edlington				
Doncaster Total				

This data shows that both the Edlington Pyramid and the Doncaster total have a surplus of places for the year ahead.

## 7. Parent Feedback

The annual Parent Demand survey collects key data from a cross sector of the Doncaster population and informs the planning undertaken by the local authority around managing the childcare market. The data below summarises the key information for the pyramid.

Number of pyramid respondents 

133
-----

Percentage of the Overall Response 

7
---

### Ages of children

0 to 1 Years	48
2 Years	35
3 and 4 Years	57
5 to 7 Years	36
8 to 10 Years	25
11+ Years	20

### Main reasons using childcare

Work	50
Child development	1
Training	4
Early education funding	13

### Main reasons not using childcare

Childcare not currently required	28
Location not accessible	0
Session times	1
Costs	14
SEND	1
Informal childcare	26













**For more information contact:**

Write to: School Organisation Service  
Doncaster Council  
Civic Office  
Waterdale  
Doncaster  
DN1 3BU

Email: [school.organisation@doncaster.gov.uk](mailto:school.organisation@doncaster.gov.uk)  
Website: [www.doncaster.gov.uk/schoolorganisation](http://www.doncaster.gov.uk/schoolorganisation)

**Civic Office**

Waterdale, Doncaster, South Yorkshire, DN1 3BU

Information can be made available in other formats such as Braille or Audio Tape on request. If you know someone who may need this service, please contact a member of staff for more information or if you need any other help or advice.

[www.doncaster.gov.uk](http://www.doncaster.gov.uk)