



Doncaster  
Council

Report

---

# Learning Provision Organisation: Key Data Report Mexborough Pyramid

**Autumn 2018 Release**

Analysis of school and childcare provision within the Mexborough pyramid.

## Contents

1. Executive Summary.....	4
1a. Demographic.....	4
1b. Schools.....	4
1c. Childcare and Early Years.....	4
1d. SEND.....	5
1e. Key Points.....	5
2. The Pyramid in Context.....	6
2a. Overview.....	6
2b. Demographics and Population.....	6
2c. Pyramid Profile.....	7
2d. Ethnicity and Migration.....	7
2e. Indices of Multiple Deprivation (IMD) Overview.....	8
2f. Working Tax Credits.....	8
2g. Free School Meals (FSM).....	8
2h. Birth Trends.....	9
2i. Social Care Referrals.....	10
3. Structure of Learning Provision.....	11
3a. Locality of Provision.....	13
3b. Academy Conversions.....	14
3c. Social Mobility.....	15
3d. English as Other Language (EAL).....	17
3e. Admissions.....	18
3f. Pupil Absence.....	19
3g. Exclusions.....	20
4. Pupil Place Planning.....	21
4a. Housing Growth and S106 Contributions.....	21
5. School Capacity (SCAP).....	25
5a. Primary School Projections.....	25
5b. Primary Summary.....	26
5c. Secondary School Projections.....	27
5d. Contributing Factors.....	27
5e. Childcare Places & Availability.....	29
5f. Childcare Projections.....	32
5g. Capital Projects.....	33
5h. SEND Provision.....	33

5i. Childcare Costs .....	36
6. Early Education Funding.....	37
6a. 2 Year Old Early Education .....	37
6b. 3 and 4 Year Old Early Education (Universal) .....	38
6c. 30 Hours Free Childcare for Eligible 3 and 4 Year Olds .....	39
6d. Future Plans .....	41
7. Parent Feedback .....	42

## 1. Executive Summary

### 1a. Demographic

The Mexborough Pyramid is located in the West of Doncaster.

Within this pyramid 95% of the children are white british the other 5% are made up of other nationalities, the largest being polish.

In 2010 the Mexborough Pyramid had an IMD of 16.93% and was the most deprived area in Doncaster, 2015 data shows that the Mexborough IMD has increased slightly to 17.10% however still remains the most deprived area of Doncaster.

Birth rates in the Mexborough Pyramid have varied since 2013, however remaining consistently higher than average.

Within Mexborough 1% of the primary pupils and 3% of the secondary pupils are EAL. The most common first language other than English locally is Polish.

45% of primary children in Mexborough access school places outside of their catchment, 15% of these were out of pyramid. 14% of secondary children access outside of their catchment school, of which 3% access faith schools.

There are a number of large scale housing developments in the Mexborough Pyramid that are all currently underway.

### 1b. Schools

The Mexborough pyramid consists of a range of learning provision types from both the school / academy and PVI sector offering a mix of flexible provision.

There are six schools in the Mexborough Pyramid, all but two have converted to academy status.

There is a program of capital and S106 investment in Doncaster. Within this Pyramid two schools have accessed Safeguarding and Access funding.

Pupil data shows that absences overall are above the Doncaster average.

Primary sector forecasts has identified clusters of shortfalls which could be further impacted with residential developments in the area. Secondary data shows sufficient capacity however there is an impact with neighbouring De Warren Academy projections showing shortfalls, this can be absorbed within Mexborough capacity.

### **1c. Childcare and Early Years**

In terms of childcare places, summer 2017 data shows that vacancies remain available in all age groups, however there is a lack of provision for after 6pm and no childcare available on weekends. This could cause difficulty for working parents and potentially impact on the level of deprivation.

This correlates with our childcare projections where we compare the number of local children by age group with the number of actual places available based on an average of their historical occupancy rate. This data predicts the potential for a shortfall of places for school age children outside of the school day.

The childcare cost comparison for childminders and full daycare shows that Mexborough childcare on average is lower than the borough wide cost and higher for sessional care. Doncaster as a borough remains below the Yorkshire and Humber average.

The take up of 2 year old early education funding boroughwide was 80% in Autumn 2017, 75% in Spring 2018 and 80% in Summer 2018.

The take up of the 3 and 4 year old universal provision boroughwide was 92% in Autumn 2017, 98% in Spring 2018 and 98% in Summer 2018.

The take up of the 30 hours extended entitlement boroughwide was 78% in Autumn 2017, 79% in Spring 2018 and 76% in Summer 2018.

### **1d. SEND**

In terms of SEND provision, there is no specific identified shortfall, we will continue to monitor the needs of families.

Analysis from the 2017 survey of childcare needs identified that the main reason families didn't access childcare was that childcare is currently not required.

### **1e. Key Points**

To summarise, the data shows that the Mexborough pyramid is undergoing some large scale housing developments will have an impact on primary and secondary schools in the future, we will continue to monitor the situation to ensure sufficient demand remains available to offer parental choice.

## 2. The Pyramid in Context

### 2a. Overview

The data within this report aims to provide an overview of the Mexborough pyramid, the available learning provision within the pyramid and identify any pressures or shortfalls which will form part of the borough wide Learning Provision Organisation Strategy.

The first section gives an overview of the dynamics of the area and then moves onto analysis of pupil place provision.

### 2b. Demographics and Population

Doncaster is an ambitious borough and very few places in the UK come close to us in terms of delivering major projects over the last 10 years. These projects are world class and have changed Doncaster considerably, with several more multi-million pound developments already underway and in the pipeline.

A major development has been The Great Yorkshire Way project (previously FARRS project). Phase one of the project linking junction 3 of the M18 to the A638 at Parrots Corner began in October 2013 and opened on 29<sup>th</sup> February 2016.

Phase two will see Great Yorkshire Way extended by creating a new section from Bawtry Road to Hurst Lane. This will create a high quality direct link from Doncaster Sheffield Airport to the M18 and also White Rose Way and Lakeside, the site of the new National College for High Speed Rail. Additional information can be viewed at <http://www.doncaster.gov.uk/FARRRS>

Other Doncaster landmark developments include:

- iPort
- Aero Centre, Yorkshire
- Project Unity (DN7)
- National Rail College
- Institute of Technology
- PGA European Tour Development at Rossington Hall
- Doncaster Corn Exchange Restoration
- Bader School
- DUTC
- Big Picture Learning

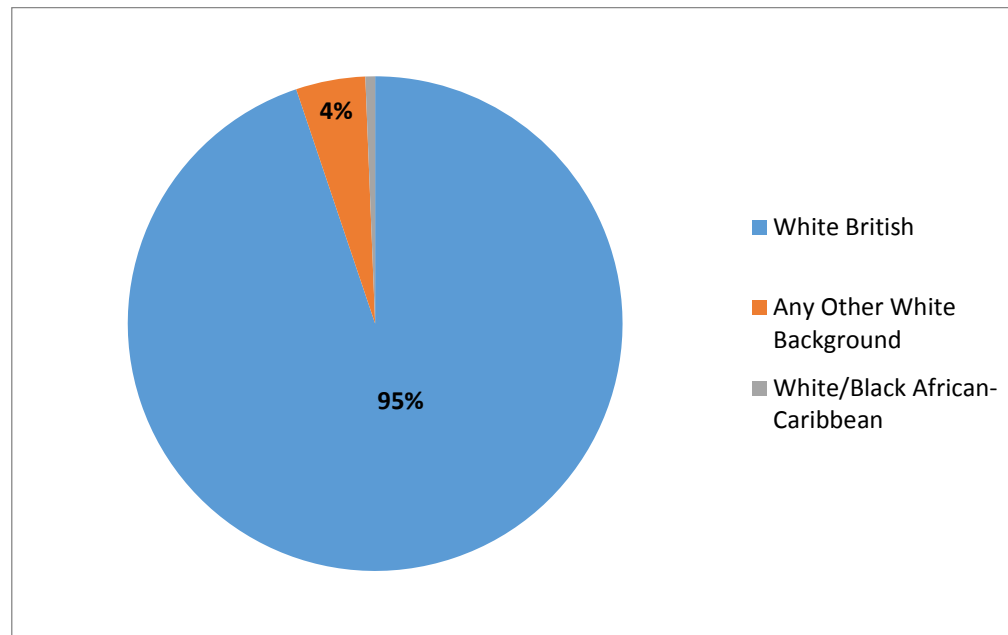
Urban Centre Master plan including; City Gateway, Enterprise Market Place, Waterfront, Minster Canalside, Civic/Business District, Parklands, Retail Core, Innovation Quarter, Waterfront Phase 2.

## 2c. Pyramid Profile

**Mexborough** is the most westerly of Doncaster's priority areas and is situated in the Dearne Valley. Mexborough has good road links to Barnsley (A6023, A633), Doncaster (via Conisbrough on the A6023) and Rotherham (A6023, A633). The town is also served by good public transport with links to Rotherham, Sheffield, Meadowhall, Barnsley and Doncaster by train and bus. Although Mexborough has never had its own colliery, coal mining and associated industries were the main employers of the town. Today Mexborough is a bustling market town, with numerous and varied facilities although still suffering from the decline of the coal industry, and the social and economic problems that were brought by this decline.

## 2d. Ethnicity and Migration

This data shows the breakdown of significant ethnicities of the children within the Mexborough Pyramid, 95% of the children are White British. The main nationality of any other white background is Polish.



Source: School Census Spring 2017

## 2e. Indices of Multiple Deprivation (IMD) Overview

This data shows a comparison between the 2015 IMD and the 2010 IMD. The data shows that although the Mexborough pyramid remains below the Doncaster average the IMD has increased slightly by 0.17% since 2010.

2015 IMD			2010 IMD		
Pyramid	2015	(1 most deprived, 16 least deprived)	Pyramid	2010	(1 most deprived, 16 least deprived)
Mexborough Pyramid	17.10%	1	Mexborough Pyramid	16.93%	1
<b>Doncaster Average</b>	<b>35.40%</b>	-	<b>Doncaster Average</b>	<b>33.56%</b>	-

\* Source: 2015 Indices of Multiple Deprivation <https://www.gov.uk/government/collections/english-indices-of-deprivation>

## 2f. Working Tax Credits

Percentage take up of the Childcare Element of Working Tax Credits. This take up is lower than the Doncaster and National averages.

School Pyramid Area	2013 - 2014 Tax Year
Mexborough Pyramid	9.43%
<b>Doncaster Average</b>	<b>14.74%</b>
<b>National Average</b>	<b>14.30%</b>

## 2g. Free School Meals (FSM)

Number of children accessing Free School Meals within the pyramid. Data shows that the Mexborough pyramid has a higher level of FSM take up than the Doncaster average. \* Non-geographic includes all special schools and PRUs, plus McAuley and XP secondary schools

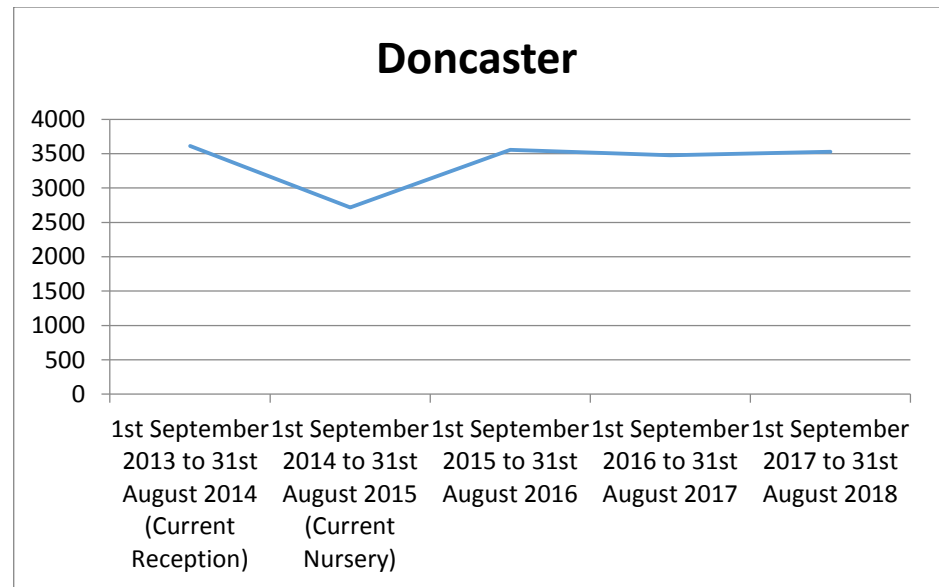
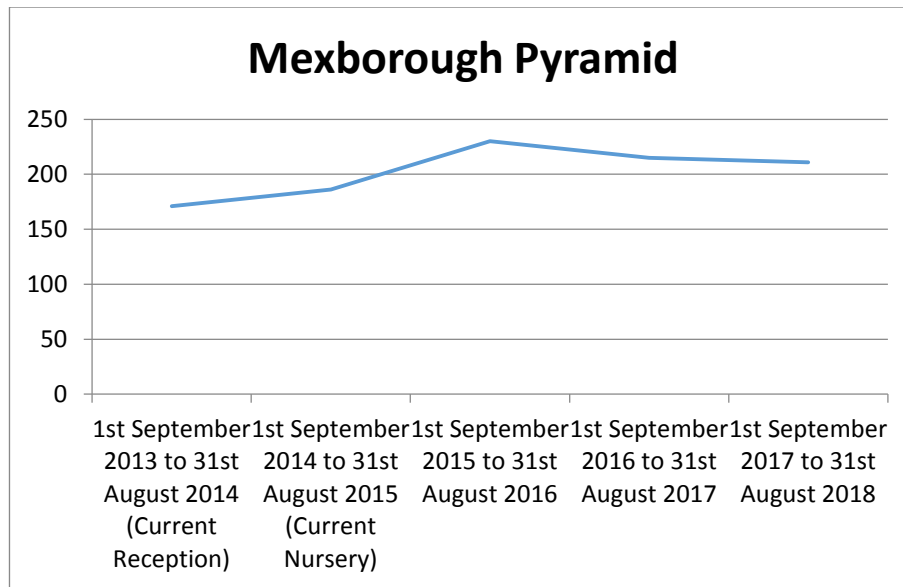
School Pyramid Area	% FSM
Mexborough Pyramid	24%
<b>Non-geographic*</b>	<b>17%</b>
<b>Doncaster Average</b>	<b>16%</b>



## 2h. Birth Trends

Baseline data for pupil place planning is based on health data. This data identifies children’s residency at time of birth, and is widely accepted as the most accurate dataset of children residing within the borough. The data shows the birth trends for children residing in Mexborough at birth against the borough wide trends.

Pyramid	1st September 2013 to 31st August 2014 (Current Reception)	1st September 2014 to 31st August 2015 (Current Nursery)	1st September 2015 to 31st August 2016	1st September 2016 to 31st August 2017	1st September 2017 to 31st August 2018
Mexborough Pyramid	171	186	230	215	211
Doncaster	3610	2719	3557	3478	3529



## 2i. Social Care Referrals

The data below shows the number of children who are subject to a Social Care Referral and the category they fall in to.

<b>January 2018</b>	<b>Children in Care</b>	<b>Children in Need</b>	<b>Child Protection</b>	<b>February 2018</b>	<b>Children in Care</b>	<b>Children in Need</b>	<b>Child Protection</b>
<b>Mexborough Pyramid</b>	12	144	43	<b>Mexborough Pyramid</b>	11	157	42
<b>% of Borough wide Total</b>	3%	8%	12%	<b>% of Borough Wide Total</b>	3%	9%	11%
<b>Doncaster Total</b>	<b>348</b>	<b>1878</b>	<b>371</b>	<b>Doncaster Total</b>	<b>343</b>	<b>1840</b>	<b>393</b>

### 3. Structure of Learning Provision

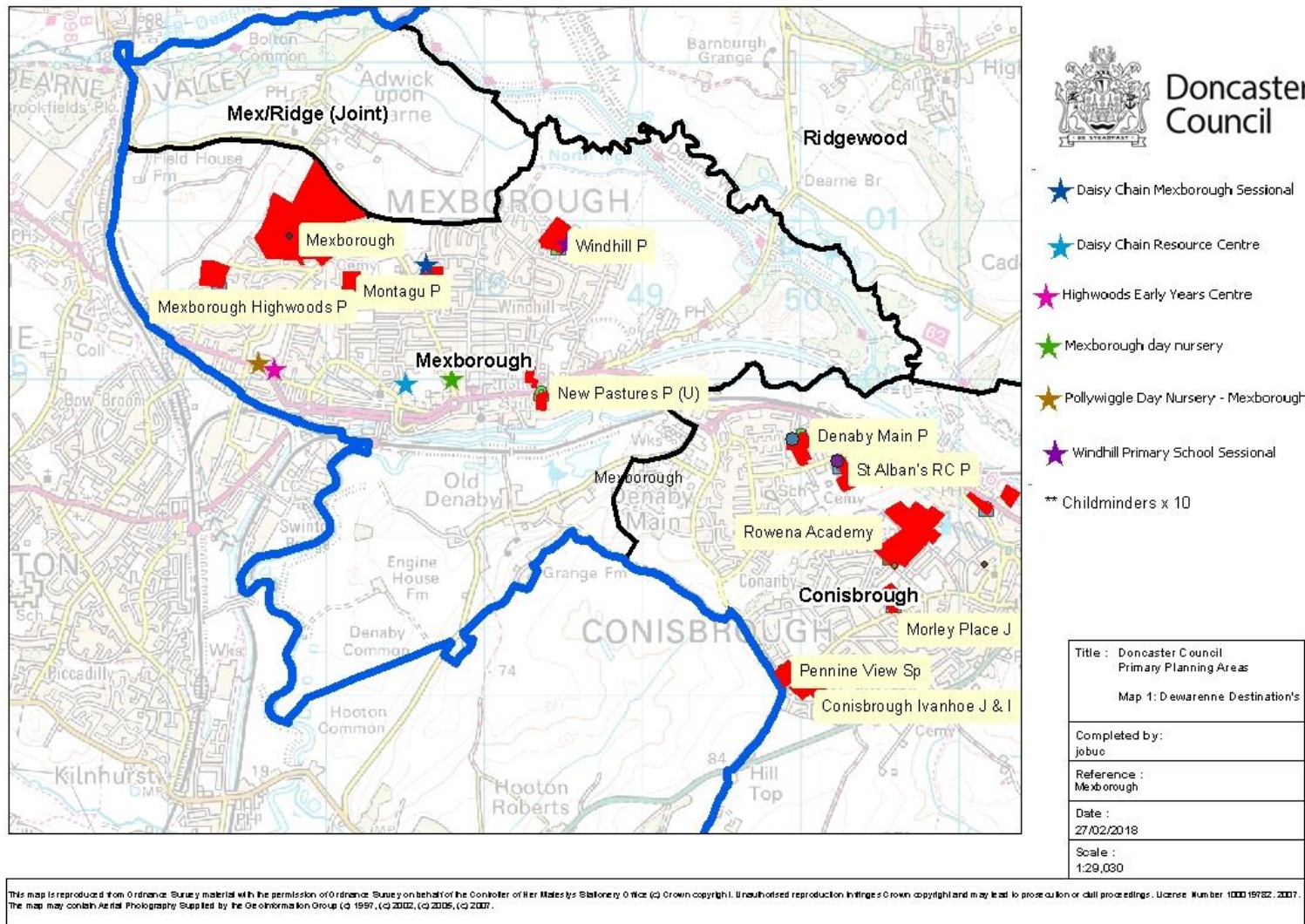
The following pages set out the context of the local provision within the pyramid. Below is a table showing all the provision by type.

<b>Secondary School</b>	<ul style="list-style-type: none"> <li>• Mexborough Academy</li> </ul>
<b>Infant Schools</b>	<ul style="list-style-type: none"> <li>• None</li> </ul>
<b>Junior Schools</b>	<ul style="list-style-type: none"> <li>• None</li> </ul>
<b>Primary Schools</b>	<ul style="list-style-type: none"> <li>• Montagu Academy</li> <li>• Mexborough New Pastures Primary School</li> <li>• Windhill Primary School</li> <li>• Highwoods Academy</li> <li>• Mexborough St John the Baptist C of E Primary</li> </ul>
<b>Special Schools</b>	<ul style="list-style-type: none"> <li>• None</li> </ul>
<b>Alternative Provision (PRU's)</b>	<ul style="list-style-type: none"> <li>• None</li> </ul>
<b>School Nurseries</b>	<ul style="list-style-type: none"> <li>• Montagu Academy</li> <li>• New Pastures Primary School</li> <li>• Windhill Primary School</li> <li>• Highwoods Academy</li> <li>• Mexborough St John the Baptist C of E Primary</li> </ul>
<b>Full Daycare Provider (PVI Sector Nurseries)</b>	<ul style="list-style-type: none"> <li>• Daisy Chain Nursery</li> <li>• Mexborough Day Nursery</li> </ul>
<b>Sessional Care Providers (Pre-School Playgroups)</b>	<ul style="list-style-type: none"> <li>• Daisy Chain Nursery</li> <li>• Highwoods Early Years Centre</li> <li>• Pollywiggle Day Nursery</li> </ul>
<b>Out Of School Provision (Breakfast Clubs, After School Care And Holiday Schemes)</b>	<ul style="list-style-type: none"> <li>• Mexborough Academy</li> <li>• Montagu Academy</li> <li>• Highwoods Academy</li> <li>• Mexborough St John the Baptist C of E Primary</li> <li>• Mexborough New Pastures Primary School</li> </ul>

	<ul style="list-style-type: none"><li>• Windhill Primary School</li></ul>
<b>Childminders</b>	<ul style="list-style-type: none"><li>• 10 Childminders</li></ul>

### 3a. Locality of Provision

To help to visualise the local provision the map below shows the geographical location of each provision from the School / Academy and PVI Sector. The exception is that childminders are not plotted. Although they work to the same Ofsted standards as all childcare provision they operate from their home address and therefore are summarised within the key.



### 3b. Academy Conversions

There has been a drive in recent years for schools to convert to academy status. Academies are independent, state-funded schools, which receive their funding directly from central government, rather than through the local authority.

In Doncaster 54% of schools have converted to academies. This includes all of our secondary schools.

In Mexborough, all but two schools have converted to academies. The remaining maintained schools are New Pastures Primary and Windhill Primary.

Maintained Schools	Academies
Mexborough New Pastures Primary School	Highwoods Academy
Windhill Primary School	Mexborough St John the Baptist C of E Primary School
	Montagu Academy
	Mexborough Academy

### 3c. Social Mobility

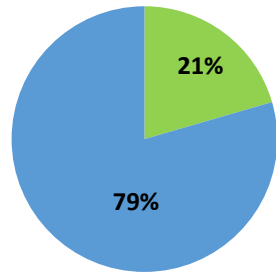
The data below shows the most common moves out of Pyramid schools and their destination school outside of the usual leaving point over a 2 year period for academic years 2015/16 and 2016/17.

School Name	Stable Places	Joined In Year	Left In Year	1 <sup>st</sup> Most Common Destination	2 <sup>nd</sup> Most Common Destination	3 <sup>rd</sup> Most Common Destination
Montagu Academy	508	62	67	Windhill Primary School (12)	Highwoods Primary School (8)	Hawthorn Primary School (3)
Mexborough New Pastures Primary School	214	137	29	Montagu Academy (3)	Mexborough St John The Baptist CofE Primary School (2)	The Levett School (1)
Windhill Primary School	283	73	13	St Alban's Catholic Primary School (2)	The Levett School (1)	Montagu Academy (1)
Highwoods Primary School	201	36	13	Mexborough New Pastures Primary School (1)	Scawthorpe Castle Hills Primary School (1)	Windhill Primary School (1)
Mexborough St John The Baptist C of E Primary School	219	18	13	Montagu Academy (3)	Morley Place Junior School (1)	Castle Academy (1)
Mexborough Academy	873	67	114	De Warenne Academy (8)	* Mexborough Academy (6)	Don Valley School and Performing Arts College (2)
<b>Pyramid Total</b>	<b>2298</b>	<b>393</b>	<b>249</b>			
<b>Doncaster Total</b>	47,157	7517	7248			

\* Schools denoted with an Asterisk identify where a pupil has moved from a Doncaster school to an out of area school then returned to their original Doncaster school.

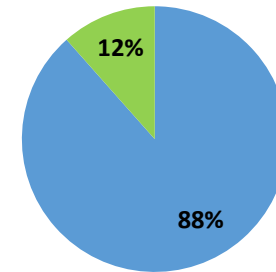
## Primary Movement Within or Outside Pyramid

■ Out of Pyramid ■ Within Pyramid



## Mobility Vs. Stable Secondary Pupils

■ Secondary School Total Stable ■ Secondary School Left



This gives an overview of locality of leavers Destination Schools within Primary Schools and leavers vs non leavers within the Secondary School.



### 3d. English as Other Language (EAL)

Within the Mexborough pyramid 7% of the primary pupils and 3% of the secondary pupils are EAL. The Doncaster total shows that 11% of primary pupils and 8% of secondary pupils are EAL, therefore Mexborough is below the boroughwide average. The data below shows most common first languages (other than English) within this pyramid compared to boroughwide:

Primary			
Mexborough Pyramid		Boroughwide	
Polish	60	Polish	1133
Russian	12	Romanian	221
Lithuanian	6	Urdu	195
Romanian	4	Kurdish	167
Chinese	3	Slovakian	158

Secondary			
Mexborough Pyramid		Boroughwide	
Polish	13	Polish	366
Slovakian	4	Slovakian	108
Latvian	2	Romanian	89
Russian	2	Urdu	87
Chinese	1	Punjabi	75

School	EMTAS Support	Languages Supported
Montagu Academy	No	N/A
Mexborough New Pastures Primary School	No	N/A
Windhill Primary School	Yes	Romanian
Highwoods Primary School	No	N/A
Mexborough St John The Baptist C of E Primary School	No	N/A
Mexborough Academy	Partial	Annual Support with First Language exams

### 3e. Admissions

The data below shows the non-catchment children on role and their identified catchment school.

#### Primary (Spring Census 2018)

School	% Attending from out of Catchment	Catchment School	Catchment School	Catchment School	Catchment School	Catchment School
Montagu Academy	31%	Highwoods Primary School (70)	Borderline (64)	Mexborough New Pastures Primary School (38)	Windhill Primary School (8)	Denaby Main Primary School (3)
Mexborough New Pastures Primary School	32%	Montagu Academy (26)	Windhill Primary School (20)	Borderline (15)	Highwoods Primary School (12)	Denaby Main Primary School (6)
Windhill Primary School	57%	Mexborough New Pastures Primary School (100)	Montagu Academy (26)	Borderline (5)	Rowena Academy (4)	Barnburgh Primary School (2)
Highwoods Primary School	13%	Montagu Academy (14)	Borderline (12)	OOA (9)	Mexborough New Pastures Primary School (2)	Windhill Primary School (1)
Mexborough St John The Baptist C of E Primary	88%	Montagu Academy (63)	Mexborough New Pastures Primary School (40)	Windhill Primary School (25)	Borderline (14)	Denaby Main Primary School (5)

#### Secondary (Spring Census 2018)

Catchment School	% Attending from out of Catchment	Catchment School	Catchment School	Catchment School	Catchment School	Catchment School
Mexborough Academy	11%	De Warenne Academy (50)	Balby Carr Academy (8)	OOA (8)	Ridgewood: The Academy @ Ridgewood Trust (4)	Campsmount (A Co-Operative Academy) (1)

### 3f. Pupil Absence

The table below shows a 5 year trend for authorised and unauthorised absences by Primary and Secondary.

Primary															
	2016/17			2015/16			2014/15			2013/14			2012/13		
	Auth	Unauth	Total	Auth	Unauth	Total	Auth	Unauth	Total	Auth	Unauth	Total	Auth	Unauth	Total
Highwoods Primary	2.6	0.7	3.3	4.1	0.4	4.5	3.5	1.0	4.5	3.9	0.6	4.5	4.7	0.3	5.0
Mexborough New Pastures	2.9	1.6	4.5	3.5	1.2	4.7	3.1	1.4	4.4	3.5	1.5	5.0	4.6	1.2	5.8
Mexborough St John the Baptist	3.2	1.1	4.3	4.3	1.1	5.4	3.1	1.1	4.2	2.4	1.0	3.4	2.8	1.3	4.1
Montagu Academy	3.1	2.1	5.2	2.5	1.7	4.2	2.8	1.8	4.6	3.1	1.4	4.5	3.8	1.7	5.5
Windhill Primary	3.4	0.9	4.3	3.5	0.7	4.1	2.0	0.3	2.4	2.3	0.6	2.9	3.4	0.5	3.8
<b>Mexborough</b>	<b>3.1%</b>	<b>1.4%</b>	<b>4.5%</b>	<b>3.4%</b>	<b>1.1%</b>	<b>4.5%</b>	<b>2.9%</b>	<b>1.2%</b>	<b>4.1%</b>	<b>3.1%</b>	<b>1.0%</b>	<b>4.1%</b>	<b>3.8%</b>	<b>1.1%</b>	<b>4.9%</b>
<b>Doncaster</b>	<b>3.0%</b>	<b>1.2%</b>	<b>4.2%</b>	<b>3.0%</b>	<b>1.1%</b>	<b>4.1%</b>	<b>3.0%</b>	<b>1.1%</b>	<b>4.1%</b>	<b>3.1%</b>	<b>0.9%</b>	<b>4.0%</b>	<b>4.2%</b>	<b>1.0%</b>	<b>5.1%</b>
<b>National</b>	<b>3.1%</b>	<b>0.9%</b>	<b>4.0%</b>	<b>3.2%</b>	<b>0.8%</b>	<b>3.9%</b>	<b>3.3%</b>	<b>0.7%</b>	<b>4.0%</b>	<b>3.20%</b>	<b>0.7%</b>	<b>3.9%</b>	<b>4.1%</b>	<b>0.7%</b>	<b>4.8%</b>

Secondary															
	2016/17			2015/16			2014/15			2013/14			2012/13		
	Auth	Unauth	Total	Auth	Unauth	Total	Auth	Unauth	Total	Auth	Unauth	Total	Auth	Unauth	Total
<b>Mexborough</b>	<b>5.6%</b>	<b>5.1%</b>	<b>10.7%</b>	<b>5.8%</b>	<b>3.3%</b>	<b>9.1%</b>	<b>5.9%</b>	<b>3.5%</b>	<b>9.5%</b>	<b>3.7%</b>	<b>3.1%</b>	<b>6.8%</b>	<b>5.5%</b>	<b>4.1%</b>	<b>9.7%</b>
<b>Doncaster</b>	<b>4.1%</b>	<b>2.5%</b>	<b>6.6%</b>	<b>3.8%</b>	<b>2.1%</b>	<b>5.9%</b>	<b>3.6%</b>	<b>2.0%</b>	<b>5.7%</b>	<b>3.7%</b>	<b>1.9%</b>	<b>5.6%</b>	<b>4.6%</b>	<b>1.9%</b>	<b>6.5%</b>
<b>National</b>	<b>3.8%</b>	<b>1.3%</b>	<b>5.2%</b>	<b>3.8%</b>	<b>1.2%</b>	<b>5.0%</b>	<b>4.0%</b>	<b>1.2%</b>	<b>5.2%</b>	<b>3.9%</b>	<b>1.2%</b>	<b>5.1%</b>	<b>4.6%</b>	<b>1.2%</b>	<b>5.8%</b>

The data shows that absences overall are above the Doncaster average.

### 3g. Exclusions

This data summarises the number of permanent exclusions.

<b>School Name</b>	<b>Number of Permanent Exclusions 2017 / 18</b>
Mexborough Academy	3
Pyramid Total	3
<b>Doncaster Primary Total</b>	<b>71</b>

## 4. Pupil Place Planning

### 4a. Housing Growth and S106 Contributions

The annual SCAP return requires each local authority to aggregate birth and housing growth data into pupil yields and pupil projections alongside actual pupil numbers. The birth and housing data can, for interested parties, be shown separately. The following represents this combined data for the Mexborough area from the 2017 SCAP return to DfE.

The housing element projects the number of additional children from the proposed developments using this formula:

- 4 to 10 year old children (Year groups R to 6) = 21 children (3 per year group) per 100 planned dwellings
- 11 to 16 year old children (Year groups 7 to 11) = 15 children (3 per year group) per 100 planned dwellings

### Current applications contributing to housing growth in the Mexborough Pyramid (as at Sept 17)

#### Highwoods Primary School

Application Decision	Development	Proposal	No. of Dwellings Proposed
Granted	Land adjacent 166 Wath Road	Erection of residential development comprising of 10	10
<b>School Total</b>			<b>10</b>

#### Montagu Academy

Application Decision	Development	Proposal	No. of Dwellings Proposed
Granted subject to S106	Red Lion Hotel, 41 Bank Street	6 Dwellings	16

Granted	The Embankment, Leach Lane Industrial Estate	Erection of 24 Dwellings, 17 houses & 7 Apartments	24
Granted	Land to the North of Orchard Close	Erection of 33 residential units	33
<b>School Total</b>			<b>73</b>

### Mexborough St Johns The Baptist C of E Primary School

<b>Application Decision</b>	<b>Development</b>	<b>Proposal</b>	<b>No. of Dwellings Proposed</b>
Awaiting Decision	Poplar Farm, Manor Lane, Adwick on Dearne	Conversion and extension of two existing barns to form total of 3 dwellings & erection of 7 new build dwellings, erection of garages, alterations to access and boundary walls and associated works.	10
<b>School Total</b>			<b>10</b>

## Mexborough New Pastures Primary School

Application Decision	Development	Proposal	No. of Dwellings Proposed
Granted	Sewage Works, Pastures Road	Approval of layout, scale and appearance for 42 houses	42
Granted	Land at Hall Gate	Erection of 16 affordable dwellings	16
Granted	Land at former Sewage Works, Pastures Road	100 Dwellings	100
Granted	Land off Pastures Road	Approval of layout, scale and appearance of 55 houses	55
Granted	Former Power Station Comelybank Drive	215 Dwellings	215
Granted	Land on the North West side of Pastures Road	147 Dwellings	147
Granted	Land on the North Side of Pastures Road	Phase 3 Ben Baileys homes	147
<b>School Total</b>			<b>722</b>

Source: School Organisation Team - Projected Housing Growth (inc. SCAP 2017)

## Pyramid Grand Totals

	Number of Proposed Developments
Pyramid Total	815

## Final Overview of Status

Catchment Primary Schools	Application Decision
4 Schools affected	<ul style="list-style-type: none"><li>• 10 Granted</li><li>• 1 Granted Subject to S106</li><li>• 1 Awaiting Decision</li></ul>



## 5. School Capacity (SCAP)

Below are the projected school places which were submitted in the 2018 SCAP survey. Primary Places are projected for 5 years including the current year due to the children starting school at 5 years, and secondary places are projected beyond this point due to the age of the children. The row titled CAP shows the capacity within each year group. Where cells are highlighted red, this is due to the projected capacity exceeding the actual places available.

### 5a. Primary School Projections

YEAR	PAN	CAP	R	PAN-NOR	1	PAN-NOR	2	PAN-NOR	3	PAN-NOR	4	PAN-NOR	5	PAN-NOR	6	PAN-NOR	SUB	BAL
<b>New Pastures</b>																		
2018/19	40	280	36	4	40	0	40	0	38	2	40	0	39	1	26	14	259	21
2019/20	40	280	50	-10	37	3	41	-1	41	-1	39	1	41	-1	40	0	289	-9
2020/21	40	280	43	-3	50	-10	37	3	41	-1	41	-1	39	1	41	-1	292	-12
2021/22	40	280	42	-2	43	-3	50	-10	37	3	41	-1	41	-1	39	1	293	-13
2022/23	40	280	26	14	42	-2	43	-3	50	-10	37	3	41	-1	41	-1	280	0
<b>Mexborough Montagu Primary</b>																		
2018/19	75	525	39	36	59	16	56	19	63	12	71	4	46	29	55	20	389	136
2019/20	75	525	78	-3	39	36	59	16	56	19	63	12	71	4	46	29	412	113
2020/21	75	525	60	15	78	-3	39	36	59	16	56	19	63	12	71	4	426	99
2021/22	75	525	65	10	60	15	78	-3	39	36	59	16	56	19	63	12	420	105
2022/23	75	525	63	12	65	10	60	15	78	-3	39	36	59	16	56	19	420	105
<b>Mexborough Highwoods Primary School</b>																		
2018/19	30	210	27	3	30	0	28	2	29	1	29	1	26	4	27	3	196	14
2019/20	30	210	34	-4	27	3	30	0	28	2	29	1	29	1	26	4	203	7
2020/21	30	210	22	8	34	-4	27	3	30	0	28	2	29	1	29	1	199	11
2021/22	30	210	26	4	22	8	34	-4	27	3	30	0	28	2	29	1	196	14
2022/23	30	210	24	6	26	4	22	8	34	-4	27	3	30	0	28	2	191	19

YEAR	PAN	CAP	R	PAN-NOR	1	PAN-NOR	2	PAN-NOR	3	PAN-NOR	4	PAN-NOR	5	PAN-NOR	6	PAN-NOR	SUB	BAL
<b>Mexborough St John The Baptist Church of England Primary School</b>																		
2018/19	30	210	30	0	30	0	30	0	30	0	27	3	23	7	30	0	200	10
2019/20	30	210	29	1	30	0	30	0	30	0	30	0	27	3	23	7	199	11
2020/21	30	210	7	23	29	1	30	0	30	0	30	0	30	0	27	3	183	27
2021/22	30	210	29	1	7	23	29	1	30	0	30	0	30	0	30	0	185	25
2022/23	30	210	22	8	29	1	7	23	29	1	30	0	30	0	30	0	177	33
<b>Windhill Primary School</b>																		
2018/19	40	280	26	14	35	5	33	7	39	1	36	4	41	-1	39	1	249	31
2019/20	40	280	32	8	26	14	35	5	33	7	39	1	36	4	41	-1	242	38
2020/21	40	280	26	14	32	8	26	14	35	5	33	7	39	1	36	4	227	53
2021/22	40	280	22	18	26	14	32	8	26	14	35	5	33	7	39	1	213	67
2022/23	40	280	22	18	29	11	7	33	29	11	30	10	30	10	30	10	177	103

### 5b. Primary Summary

YEAR	PAN	CAP	R	PAN-NOR	1	PAN-NOR	2	PAN-NOR	3	PAN-NOR	4	PAN-NOR	5	PAN-NOR	6	PAN-NOR	SUB	BAL
2018/19	215	1505	158	57	194	21	187	28	199	16	203	12	175	40	177	38	1293	212
2019/20	215	1505	223	-8	159	56	195	20	188	27	200	15	204	11	176	39	1345	160
2020/21	215	1505	158	57	223	-8	159	56	195	20	188	27	200	15	204	11	1327	178
2021/22	215	1505	184	31	158	57	223	-8	159	56	195	20	188	27	200	15	1307	198
2022/23	215	1505	157	58	191	24	139	76	220	-5	163	52	190	25	185	30	1245	260

### Primary Overview

We have identified certain shortfalls within clusters and in the primary sector in general. We will continue to monitor the situation closely and work with the schools affected.

**5c. Secondary School Projections**  
**Mexborough Academy**

YEAR	PAN	CAP	7	PAN-NOR	8	PAN-NOR	9	PAN-NOR	10	PAN-NOR	11	PAN-NOR	SUB	BAL	12	13	14	6TH
2018/19	224	1120	131	93	124	100	132	92	137	87	155	69	679	441	-	-	-	-
2019/20	224	1120	143	81	133	91	126	98	134	90	139	85	675	445	-	-	-	-
2020/21	224	1120	139	85	143	81	133	91	126	98	134	90	675	445	-	-	-	-
2021/22	224	1120	162	62	139	85	143	81	133	91	126	98	703	417	-	-	-	-
2022/23	224	1120	159	65	162	62	139	85	143	81	133	91	736	384	-	-	-	-
2023/24	224	1120	149	75	159	65	162	62	139	85	143	81	752	368	-	-	-	-
2024/25	224	1120	155	69	149	75	159	65	162	62	139	85	764	356	-	-	-	-
2025/26	224	1120	155	69	155	69	149	75	159	65	162	62	780	340	-	-	-	-

**5d. Contributing Factors**

**De Warenne Academy**

YEAR	PAN	CAP	7	PAN-NOR	8	PAN-NOR	9	PAN-NOR	10	PAN-NOR	11	PAN-NOR	SUB	BAL	12	13	14	6TH
2018/19	150	750	151	-1	134	16	151	-1	145	5	132	18	713	37	35	24	-	59
2019/20	150	750	145	5	151	-1	134	16	151	-1	145	5	726	24	44	25	-	69
2020/21	150	750	144	6	145	5	151	-1	134	16	151	-1	725	25	48	32	-	80
2021/22	150	750	172	-22	144	6	145	5	151	-1	134	16	746	4	50	35	-	85
2022/23	150	750	145	5	172	-22	144	6	145	5	151	-1	757	-7	44	36	-	80
2023/24	150	750	173	-23	145	5	172	-22	144	6	145	5	779	-29	50	32	-	82
2024/25	150	750	173	-23	173	-23	145	5	172	-22	144	6	807	-57	48	36	-	84

## Cluster Secondary Total

YEAR	PAN	CAP	7	PAN-NOR	8	PAN-NOR	9	PAN-NOR	10	PAN-NOR	11	PAN-NOR	SUB	BAL	12	13	14	6TH
2018/19	374	1870	282	92	258	116	283	91	282	92	287	87	1392	478	35	24	-	59
2019/20	374	1870	288	86	284	90	260	114	285	89	284	90	1401	469	44	25	-	69
2020/21	374	1870	283	91	288	86	284	90	260	114	285	89	1400	470	48	32	-	80
2021/22	374	1870	334	40	283	91	288	86	284	90	260	114	1449	421	50	35	-	85
2022/23	374	1870	304	70	334	40	283	91	288	86	284	90	1493	377	44	36	-	80
2023/24	374	1870	322	52	304	70	334	40	283	91	288	86	1531	339	50	32	-	82
2024/25	374	1870	328	46	322	52	304	70	334	40	283	91	1571	299	48	36	-	84

## Secondary Overview

Secondary data shows no shortfalls within Mexborough pyramid there is an impact with neighbouring De Warren Academy projections showing shortfalls, however this is absorbed within Mexborough capacity. This will need to be monitored as part of our review of secondary places.

## 5e. Childcare Places & Availability

The table below shows the occupancy levels and the availability of childcare provision for the Summer Term 2018.

School, PVI and Childminder Provision	0 to 1 Yrs			2 Yrs			3 & 4 Yrs			5 to 10 Yrs			11 to 14 Yrs			Total			VACANCY RATE	Availability					
	PLACES	NOR (FTE)	BALANCE	PLACES	NOR (FTE)	BALANCE	PLACES	NOR (FTE)	BALANCE	PLACES	NOR (FTE)	BALANCE	PLACES	NOR (FTE)	BALANCE	PLACES	NOR (FTE)	BALANCE		Annual	Before 8am	8am to 6pm	After 6pm	Weekends	Shift Pattern
Highwoods Academy							13	13	1							13	13	1	8%	TT		1			
Mexborough St John the Baptist C of E Primary							13	20	-7							13	20	-7	-54%	TT		1			
Montagu Academy							39	24	16							39	24	16	41%	TT		1			
New Pastures Primary School							26	23	3							26	23	3	12%	TT		1			
Windhill Primary							26	19	8							26	19	8	31%	TT		1			
<b>School Totals</b>							<b>117</b>	<b>99</b>	<b>21</b>							<b>117</b>	<b>99</b>	<b>21</b>	<b>18%</b>	-	<b>0</b>	<b>5</b>	<b>0</b>	<b>0</b>	<b>0</b>
Daisy Chain Nursery (Mexborough Resource Cent	0	0	0	4	1	3	12	12	0							16	13	3	19%	TT					1
Mexborough day nursery	12	11	1	16	13	3	38	26	12							66	50	16	24%	AY		1			1
Daisy Chain Nursery (Mexborough St. Johns)				48	24	24	0	0	0							48	24	24	50%	TT		1			
Highwoods Early Years Centre				42	24	18	48	20	28							90	44	46	51%	TT		1			
Pollywiggles Day Nursery (Mex. Children's Centre)				32	13	19	28	24	4							60	37	23	38%	TT		1			
<b>PVI Totals</b>	<b>12</b>	<b>11</b>	<b>1</b>	<b>142</b>	<b>75</b>	<b>67</b>	<b>126</b>	<b>82</b>	<b>44</b>							<b>280</b>	<b>168</b>	<b>112</b>	<b>40%</b>	-	<b>0</b>	<b>4</b>	<b>0</b>	<b>0</b>	<b>2</b>
<b>10 x Childminder</b>	<b>13</b>	<b>9</b>	<b>4</b>	<b>14</b>	<b>12</b>	<b>2</b>	<b>13</b>	<b>10</b>	<b>3</b>	<b>41</b>	<b>26</b>	<b>15</b>	<b>5</b>	<b>1</b>	<b>4</b>	<b>86</b>	<b>58</b>	<b>28</b>	<b>33%</b>	-	<b>10</b>	<b>7</b>	<b>1</b>	<b>0</b>	<b>1</b>
<b>All Sector Total</b>	<b>25</b>	<b>20</b>	<b>5</b>	<b>156</b>	<b>87</b>	<b>69</b>	<b>256</b>	<b>191</b>	<b>68</b>	<b>129</b>	<b>87</b>	<b>42</b>	<b>26</b>	<b>14</b>	<b>12</b>	<b>483</b>	<b>325</b>	<b>161</b>	<b>33%</b>	-	<b>10</b>	<b>16</b>	<b>1</b>	<b>0</b>	<b>3</b>

AY (All Year), TT (Term Time Only), SH (School Holidays Only).

The data shows that 33% of the vacancies overall remain vacant. The data also shows that there are vacancies available for every age group, however there is no provision that operates weekends and limited availability after 6pm.

## School based and PVI Sector Breakfast Childcare Provision

School & PVI Breakfast Provision	0 to 1 Yrs			2 Yrs			3 & 4 Yrs			5 to 10 Yrs			11 to 14 Yrs			Total			VACANCY RATE	Availability					
	PLACES	NOR (FTE)	BALANCE	PLACES	NOR (FTE)	BALANCE	PLACES	NOR (FTE)	BALANCE	PLACES	NOR (FTE)	BALANCE	PLACES	NOR (FTE)	BALANCE	PLACES	NOR (FTE)	BALANCE		Annual	Before 8am	8am to 6pm	After 6pm	Weekends	Shift Patter
Highwoods Academy							10	10	0	50	50	0	0	0	0	60	60	0	0%	TT		1			
Mexborough Academy							0	0	0	0	0	0	661	150	511	661	150	511	77%	TT		1			
Montagu Academy							30	30	0	20	20	0	0	0	0	50	50	0	0%	TT		1			
New Pastures Primary School - Lower							10	10	0	50	50	0	0	0	0	60	60	0	0%	TT		1			
New Pastures Primary School - Upper Site							0	0	0	35	26	9	0	0	0	35	26	9	26%	TT		1			
St John the Baptist C of E Primary School							2	2	0	22	22	0	0	0	0	24	24	0	0%	TT	1	1			
Windhill Primary School							6	6	0	29	25	4	0	0	0	35	31	4	11%	TT		1			
<b>School Totals</b>							<b>58</b>	<b>58</b>	<b>0</b>	<b>206</b>	<b>193</b>	<b>13</b>	<b>661</b>	<b>150</b>	<b>511</b>	<b>925</b>	<b>401</b>	<b>524</b>	<b>57%</b>	-	<b>1</b>	<b>7</b>	<b>0</b>	<b>0</b>	<b>0</b>
<b>PVI Sector Totals</b>																									
<b>All Sector Totals</b>							<b>58</b>	<b>58</b>	<b>0</b>	<b>206</b>	<b>193</b>	<b>13</b>	<b>661</b>	<b>150</b>	<b>511</b>	<b>925</b>	<b>401</b>	<b>524</b>	<b>57%</b>						

AY (All Year), TT (Term Time Only), SH (School Holidays Only).

The data shows that after school provision is only available in schools with 57% of vacancies vacant, allowing for any increase in requirements.

### School based and PVI Sector After School Childcare Provision

School & PVI After School Provision	0 to 1 Yrs			2 Yrs			3 & 4 Yrs			5 to 10 Yrs			11 to 14 Yrs			Total			VACANCY RATE	Availability					
	PLACES	NOR (FTE)	BALANCE	PLACES	NOR (FTE)	BALANCE	PLACES	NOR (FTE)	BALANCE	PLACES	NOR (FTE)	BALANCE	PLACES	NOR (FTE)	BALANCE	PLACES	NOR (FTE)	BALANCE		Annual	Before 8am	8am to 6pm	After 6pm	Weekends	Shift Patterns
Highwoods Academy							5	5	0	20	20	0	0	0	0	0	0	0%	TT		1				
Mexborough Academy							0	0	0	0	0	0	110	50	60	110	50	60	55%	TT		1			
Montagu Academy							0	0	0	72	72	0	0	0	0	72	72	0	0%	TT		1			
New Pastures Primary School - Lower							0	0	0	40	40	0	0	0	0	40	40	0	0%	TT		1			
New Pastures Primary School (Upper Site)							0	0	0	25	20	5	0	0	0	25	20	5	20%	TT		1			
Windhill Primary School							2	2	0	10	10	0	0	0	0	12	12	0	0%	TT		1			
<b>School Totals</b>							<b>7</b>	<b>7</b>	<b>0</b>	<b>167</b>	<b>162</b>	<b>5</b>	<b>110</b>	<b>50</b>	<b>60</b>	<b>284</b>	<b>219</b>	<b>65</b>	<b>23%</b>	-	<b>0</b>	<b>6</b>	<b>0</b>	<b>0</b>	<b>0</b>
<b>PVI Sector Totals</b>																									
<b>All Sector Totals</b>							<b>7</b>	<b>7</b>	<b>0</b>	<b>167</b>	<b>162</b>	<b>5</b>	<b>110</b>	<b>50</b>	<b>60</b>	<b>284</b>	<b>219</b>	<b>65</b>	<b>23%</b>						

AY (All Year), TT (Term Time Only), SH (School Holidays Only).

The data shows that after school provision is only available in schools with 23% of vacancies vacant.

### School based and PVI Sector Holiday Childcare Provision

School & PVI Holiday Provision	0 to 1 Yrs			2 Yrs			3 & 4 Yrs			5 to 10 Yrs			11 to 14 Yrs			Total			VACANCY RATE	Availability				
	PLACES	NOR (FTE)	BALANCE	PLACES	NOR (FTE)	BALANCE	PLACES	NOR (FTE)	BALANCE	PLACES	NOR (FTE)	BALANCE	PLACES	NOR (FTE)	BALANCE	PLACES	NOR (FTE)	BALANCE		Annual	Before 8am	8am to 6pm	After 6pm	Weekends
<b>School Totals</b>	<b>No Provision In This Area</b>																							
<b>PVI Sector Totals</b>																								
<b>All Sector Totals</b>																								

## 5f. Childcare Projections

This table below measures the birth rates of children to anticipate the future projected need for childcare places within this pyramid. This data shows the anticipated projected place requirements for the spring and summer 2018 terms. This information is displayed using a red, amber green (RAG rating).

- **Green** depicts sufficient available places
- **Amber** depicts the potential for a shortfall of places if demand increases
- **Red** shows an identified need where supply does not meet local demand.

### Summary of Projected Places Spring 2018

Spring Term 2018	0 and 1 Years	2 Years	3 and 4 Years	5 to 10 Years	11 to 14 Years
Mexborough Pyramid					
<b>Doncaster Total</b>					

Mexborough projections show that there is a potential for a shortfall of places for children aged between 0 to 1 years. We will continue to monitor this over the coming terms.

On a boroughwide basis early indications of birth vs previous occupancy rates show that there are a sufficient number of places available for all ages in Spring 2018.

### Summary of Projected Places Summer 2018

Summer Term 2018	0 and 1 Years	2 Years	3 and 4 Years	5 to 10 Years	11 to 14 Years
Mexborough Pyramid					
<b>Doncaster Total</b>					

Mexborough projections show that there is a potential for a shortfall of places for children aged between 0 to 11 years. We will continue to monitor this over the coming terms. On a borough wide basis, early indications of birth vs. previous occupancy rates show that there are a sufficient number of places available for all ages in summer 2018.



## 5g. Capital Projects

There are currently no capital projects in place for the Mexborough Pyramid

Safeguarding and Access Projects		
School / Academy	Description of Project	Status
Windhill Primary School	Lighting Improvements (Round 3)	Approved
Mexborough St John The Baptist C of E Primary School	Safe and Secure Fencing	Approved

## 5h. SEND Provision

This data shows the number of pupils identified as SEND per school, what proportion of the total cohort this represents and their SEND status.

School Name	Number of SEND Pupils	% of Total Cohort	Education, Health and Care Plan	SEN Support	Statement of Special Needs
Highwoods Primary School	42	19	1	41	0
Mexborough New Pastures Primary School	17	6	0	17	0
Mexborough St John the Baptist CofE Primary School	29	13	0	29	0
Montagu Academy	58	13	0	55	3
Windhill Primary School	43	14	2	41	0
Mexborough Academy	121	18	6	115	0
<b>Pyramid Total</b>	<b>310</b>	<b>15%</b>	<b>9</b>	<b>298</b>	<b>3</b>
<b>Doncaster Total</b>	<b>6668</b>	<b>16%</b>	<b>816</b>	<b>5486</b>	<b>366</b>

- There were a total of 1247 children / young people living in Doncaster with a special educational need or disability aged 0 to 19 years old registered with Together Information Exchange (TIE), at September 2017. This shows an increase of 158 children / young people since 2015.
- At October 2017, there were a total of 131 children known to the Pre-School Inclusion Team living in Doncaster with a special educational need or disability aged 0 to 5 years old.
- At Summer 2017 there were 71 Ofsted registered group childcare providers and 213 childminders on the Local Authority Directory registered to provide the free early years entitlement. All have to meet the requirements of the SEN Code of Practice and Disability Discrimination Act requirements. Three Ofsted registered group providers are designated as “enhanced provisions”, these are within Wheatley, Intake & Belle Vue and Adwick.
- A specialist provision for pre-school children with SEND is based within the Central Children’s Centre. The setting is registered with Ofsted and offers sessions for funded 2, 3 & 4 year old children.
- There were a total of 513 children educated within schools that accessed support through an Education, Health & Care Plan. An additional 5762 children had SEN support or a statement, as reported at the May Schools Census 2017.
- There are five special schools within Doncaster. In the Summer Term 2017 School Childcare data collection, the following information was provided regarding extended services outside of the school day.

<b>Pyramid</b>	<b>Name of School</b>	<b>Age range</b>	<b>Type of provision offered</b>
Adwick	Northridge Community School	3 to 19	Breakfast and After school
Ridgewood	Stone Hill School	7 to 16	Breakfast
Conisbrough	Pennine View School	7 to 16	No provision
Hatfield	Coppice School	3 to 19	After school
Danum	Heatherwood School	3 to 19	No provision

A new special school for communication and interaction special educational needs is to be established in Doncaster.

The school will primarily be for children and young people with Autism Spectrum Disorder, specifically high functioning ASD and Asperger’s. This cohort may also have social, emotional and mental health needs and specific learning difficulties.

Working with the Department for Education, the new school is envisaged to be on the Hungerhill Enterprise Park site. This school would have places for 100 children and young people, 80 of which would be filled by the council, with the remaining 20 offered to neighbouring authorities.

The school will be closely associated with another secondary school to enable pupils to access a mainstream curriculum where this is appropriate. The development will take place as part of the programme creating 1,600 new special free school places across England, made up of a total of 19 new schools.

## 5i. Childcare Costs

The average costs are indicated across the different Ofsted registered childcare types in the table below. As the opening times for day nurseries and childminders can vary, the weekly costs are based on average opening hours of 8am to 6pm. Breakfast and after-school are grouped within 'out of school' costs in line with the Yorkshire and Humber format to allow an easy comparison. This table shows the average costs of childcare for this pyramid in comparison to boroughwide and Yorkshire and Humber averages.

<b>Pyramid</b>	<b>Childminder Per Day</b>	<b>Full Daycare Per Week</b>	<b>Sessional Care Per Session</b>	<b>Breakfast Club Per Session</b>	<b>After School Club Per Session</b>	<b>Holiday Playscheme Per Day</b>
Mexborough Pyramid	£30.73	£157.50	£14.25	Not known	Not known	–
<b>Doncaster Average</b>	<b>£32.06</b>	<b>£178.34</b>	<b>£13.27</b>	<b>£5.64</b>	<b>£8.50</b>	<b>£26.56</b>
<b>Yorks &amp; Humber Average</b>	<b>£39.80</b>	<b>£196.53</b>	<b>Not Known</b>	<b>Not Known</b>	<b>£10.06</b>	<b>£25.14</b>

Average childcare costs across the Mexborough pyramid area indicate:

- Childminders costs are lower than the average for Doncaster and Yorkshire & Humber.
- Day nurseries (Full Daycare) costs are lower than the average for Doncaster and significantly lower compared to the Yorkshire & Humber average.
- Sessional care costs for Mexborough are slightly higher than the Doncaster average. There are no Yorkshire and Humber costs to compare with.
- Out of school childcare for before school and after school care costs are not known for this area.
- There are no holiday playschemes run in the Mexborough pyramid at the moment.

School childcare costs - The range of costs submitted by the schools in this area can vary a great deal therefore we cannot calculate an average cost as this may not be a true reflection. It is recommended to ascertain the service and actual cost for a particular school, contact the Doncaster Families Information Service or the school directly.

## 6. Early Education Funding

### 6a. 2 Year Old Early Education

#### Eligibility Criteria

The provision of early education for up to 15 hours per week for eligible 2 year olds starting the term after their 2<sup>nd</sup> birthday. Families must be in receipt of one or more of the following:

- Income Support
- Income-based Jobseeker's Allowance (JSA)
- Income-related Employment and Support Allowance (ESA)
- Support through Part 6 of the Immigration and Asylum Act
- Have an annual household income under £16,190 and claim Child Tax Credit and / or Working Tax Credit
- Guaranteed Element of State Pension Credit
- The Working Tax Credit 4-week run on (the payment you get when you stop qualifying for Working Tax Credit)
- Universal Credit

Children are also entitled to a place if:

- Your child is looked after by the local council
- Your child has a current statement of special educational needs (SEN) or an education, health and care plan
- Your family is in receipt of Disability Living Allowance for the child
- A child who has left care through special guardianship order, child arrangement order or adoption order

#### 2 Year Old (Boroughwide)

Autumn 2017	Spring 2018	Summer 2018
80%	75%	80%

### **6b. 3 and 4 Year Old Early Education (Universal)**

#### **Eligibility Criteria**

This is an entitlement for all children starting the term following their third birthday for up to 15 hours per week.

#### **3 and 4 Year Old Universal (Boroughwide)**

<b>Autumn 2017</b>	<b>Spring 2018</b>	<b>Summer 2018</b>
<b>92%</b>	<b>98%</b>	<b>98%</b>

## 6c. 30 Hours Free Childcare for Eligible 3 and 4 Year Olds

### Eligibility Criteria

Eligibility for working parents includes: employed, self-employed and workers on a zero hour's contract. To take up the 30 hours of free childcare families need to meet all the following criteria:

- Each parent earns less than £100,000 per year
- Both parents are working and in a lone parent family the sole parent must work
- Each parent works a minimum of 16 hours a week or earns on average a weekly minimum amount that is equivalent to 16 hours a week at either the National Minimum Wage or National Living Wage, for example, £120 a week based on National Living Wage

There are exceptions to both parents having to work. Families where one parent does not work (or neither parent works) will not usually be entitled to the 15 hours extended entitlement; however, they will be eligible where:

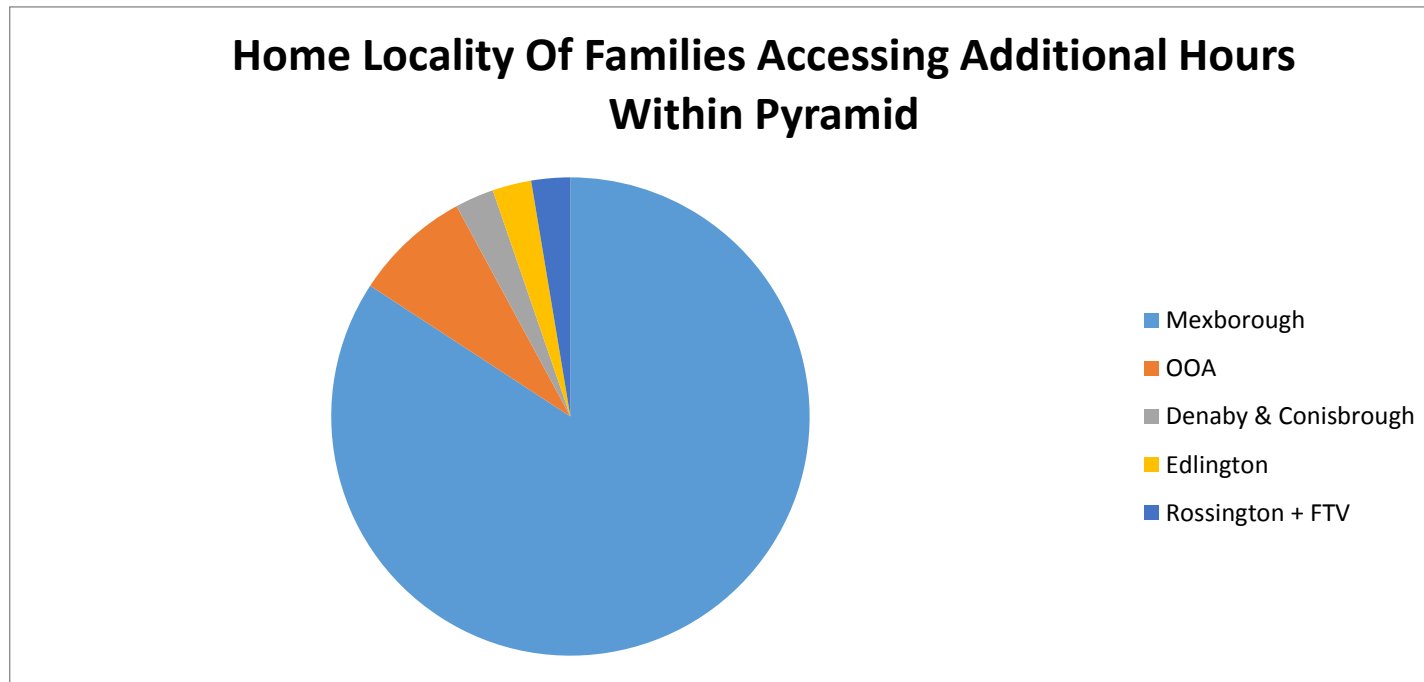
- both parents are employed but one (or both parents) is temporarily away from the workplace on: parental, maternity or paternity leave; adoption leave; or on statutory sick pay
- one parent is employed and one parent:
  - has substantial caring responsibilities based on specific benefits received for caring
  - is disabled or incapacitated based on receipt of specific benefits

### 30 Hours (Boroughwide)

Autumn 2017	Spring 2018	Summer 2018
78%	79%	76%

We have assessed where families who access their additional hours and their home locality, the data can be seen below

<b>Mexborough</b>	<b>School</b>	<b>PVI</b>	<b>Total</b>	<b>%</b>
<b>Mexborough</b>	<b>13</b>	<b>19</b>	<b>32</b>	<b>84</b>
<b>OOA</b>	<b>0</b>	<b>3</b>	<b>3</b>	<b>8</b>
<b>Denaby &amp; Conisbrough</b>	<b>0</b>	<b>1</b>	<b>1</b>	<b>3</b>
<b>Edlington</b>	<b>0</b>	<b>1</b>	<b>1</b>	<b>3</b>
<b>Rossington + FTV</b>	<b>1</b>	<b>0</b>	<b>1</b>	<b>3</b>
<b>TOTAL</b>	<b>14</b>	<b>24</b>	<b>38</b>	<b>100</b>





## 6d. Future Plans

We anticipate an increase in take up over the coming terms. As part of our sufficiency strategy we have applied a methodology to predict future place needs. The following table shows the pyramid demand by term with potential maximum vs. minimum take up and any potential shortfall of places. This data is based on the combined need for places for both 30 hours and universal entitlement.

This information is displayed using a red, amber green (RAG rating)

- **Green** depicts sufficient available places
- **Amber** depicts the potential for a shortfall of places if demand increases
- **Red** shows an identified need where supply does not meet local demand.

Sub Locality Area	Spring 18		Summer 18	
	MAX (100% Take Up)	MIN (Current Universal Take Up)	MAX (100% Take Up)	MIN (Current Universal Take Up)
Mexborough				
Doncaster Total				

This data shows that sufficient places remain available for the coming two terms, we will continue to monitor this term on term.

## 7. Parent Feedback

The annual Parent Demand survey collects key data from a cross sector of the Doncaster population and informs the planning undertaken by the local authority around managing the childcare market. The data below summarises the key information for the pyramid.

Number of pyramid respondents 

75
----

Percentage of the Overall Response 

4%
----

### Ages of children

0 to 1 Years	40
2 Years	23
3 and 4 Years	18
5 to 7 Years	12
8 to 10 Years	8
11+ Years	7

### Main reasons using childcare

Work	29
Child development	3
Training	1
Early education funding	4

### Main reasons not using childcare

Childcare not currently required	21
Location not accessible	1
Session times	2
Costs	10
SEND	0
Informal childcare	9



**For more information contact:**

Write to: Learning Provision Organisation Service  
Doncaster Council  
Civic Office  
Waterdale  
Doncaster  
DN1 3BU

Email: [Lp.org@doncaster.gov.uk](mailto:Lp.org@doncaster.gov.uk)

Website: [www.doncaster.gov.uk/schoolorganisation](http://www.doncaster.gov.uk/schoolorganisation)

**Civic Office**

Waterdale, Doncaster, South Yorkshire, DN1 3BU

Information can be made available in other formats such as Braille or Audio Tape on request. If you know someone who may need this service, please contact a member of staff for more information or if you need any other help or advice.

**[www.doncaster.gov.uk](http://www.doncaster.gov.uk)**