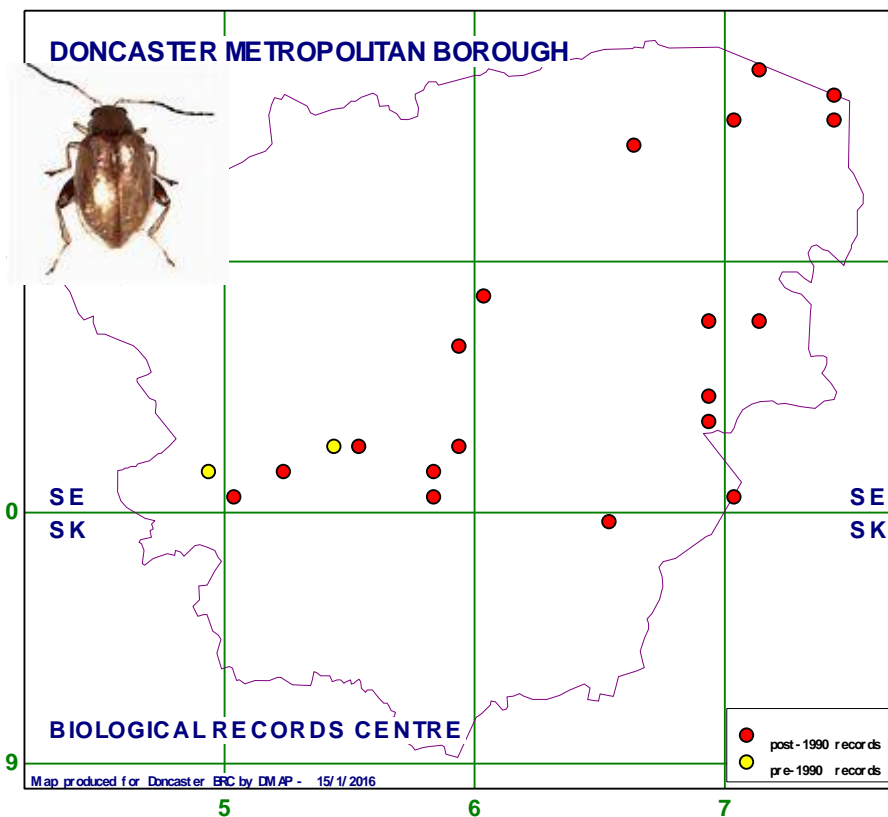


Doncaster Local Records Centre

Longitarsus jacobaeae (Waterhouse, G.R., 1858)



Annual Review 2015/2016

Doncaster Metropolitan Borough Council
Civic Office
Waterdale
Doncaster DN1 3BU



Doncaster MBC Local Records Centre

Annual Report for the period 1 April 2015 – 31 March 2016

Report contents

Steering Group membership.....	3
Summary of key activities.....	3
Staffing and contact details.....	4
Data handling.....	4
Data supply.....	5
Data receipt.....	6
Data holdings.....	7
Database maintenance.....	8
Database technical support.....	8
LWS resurvey programmes.....	8
ALERC accreditation.....	9

This Annual Report focuses on the main issues and activities with which the Local Records Centre has been involved during the period 1/4/2015 to 31/3/2016. The Annual Report is now included in the LRC webpages.



Steering Group membership and organisations represented.

Jane Stimpson – DMBC Planning Officer/LRC Manager/budget holder
Bob Marsh – DMBC Biological Records Officer
Melissa Massarella – DMBC Biodiversity Officer
Helen McCluskie – DMBC Geodiversity Officer
Carolyn Dalton – Doncaster Museum
Ken Dorning – Sheffield Area Geology Trust/Sorby Natural History Society
Derek Whiteley – Sorby Natural History Society
Phillip Whelpdale – Yorkshire Wildlife Trust
Louise Hill – Doncaster Naturalists' Society
Pip Seccombe – Doncaster Naturalists' Society
Colin Howes – Independent member
Simon Pickles – temp for Yorkshire and Humber Environmental Data Network
Helen Kirk – Thorne and Hatfield Moors Conservation Forum
Tim Kohler – Natural England

I thank Melissa Massarella for again dealing with the preparation of the 2015 Steering Group Meeting minutes.

Summary of key activities for 1/4/15 to 31/3/16

1. The Local Records Centre (LRC) responded to 80 enquiries for biodiversity information during the period 1 April 2015 to 10 March 2016, all within five working days of the information request form. All enquiries were completed within ten working days of receipt.
2. Of these 80 enquiries 72 were from commercial organisations, 7 from education establishments, Government sponsored bodies or Wildlife Trusts/specialist conservation groups and 1 enquiry from within DMBC.
3. Data input for financial year included 13673 species records from 155 recording individuals and organisations (to 31 March 2016).
4. Continuation of the input of historical site data as time permitted.
5. Input data from the 2015 Local Wildlife Sites (LWS) resurvey project. There were 3837 records resulting from this survey of 28 sites.
6. Pursuance of Association of Local Environmental Records Centres (ALERC) accreditation, in which we were successful in October 2015.
7. Preparation for the Local Wildlife Sites resurvey programme for 2016 in conjunction with Biodiversity Officer and Biological Records Officer.

Staffing and contact details

Role	Staff	Tasks	Email
LRC manager	Jane Stimpson	Overall LRC manager and budget holder	Jane.stimpson@doncaster.gov.uk
Biodiversity Officer	Melissa Massarella	Survey programme	Melissa.massarella@doncaster.gov.uk
Biological Records Officer	Bob Marsh	Data requests	brc@doncaster.gov.uk
Biological Records Officer	Bob Marsh	Species data – collation and validation	brc@doncaster.gov.uk
Biological Records Officer	Bob Marsh	Habitat data – validation	brc@doncaster.gov.uk
Biological Records Officer	Bob Marsh	Database maintenance	brc@doncaster.gov.uk

The LRC employs one part-time staff member (the Biological Records Officer) on a three-days-per-week basis, who maintains the database, deals with data enquiries and the business of the LRC, and assists with biological recording aspects of the work carried out by members of Doncaster Metropolitan Borough Council's Planning section.

Data handling summary and general statement

The charging structure for data enquiries that has been in place since April 2014 continues to form the basis of the LRC's income. In the period 1/4/15 to 31/3/2016 the LRC received 72 chargeable data enquiries (of a total of 80) and received income of £11200 **including** VAT, all very similar figures to last year, and representing a marginal increase of only a 1% rise over 2014/15. It is intended that this money is made available to offset the cost of the 2016 LWS resurvey programme.

Data supply

Data requests for the financial year 1 April 2015 - 31 March 2016.

Data requests summary:-

Total no. of enquiries	80
Total chargeable enquiries	72
Total income 1/4/2015 to 31/3/2016	£11200 including VAT

Data requests allocated to clients:-

Absolute Ecology	1
Access Ecology	4
AECOM	3
Amec Foster Wheeler	1
AMEY	1
ARUP	2
Aspect Ecology Ltd	2
Atkins Global	2
Avian Ecology	1
Bagshaw Ecology Ltd	1
Bowland Ecology	1
Brindle and Green	1
Brooks Ecological	5
Capita	1
Clear Environmental Consultants	1
Cristie Breen	1
DMBC	1
Dunelm Ecology	1
Ecology Solutions East	1
ECUS	4
Envirotech	2
Enzygo	1
Estrada Ecology	1
FPCR Environmental & Design Ltd	3
Innovation Group	1
Living Ecosystems	1
MAB Environment	1
Mammal Society	1
Marine Biological Association	1
Middlemarch Environmental	4

Middleton Ecological Consultancy	2
Milner Ecology	3
Mott MacDonald Ltd	3
MRB Ecology and Environment	3
Natural England	1
Opus International	1
Ramboll Environ	1
Rhodes Ecology	1
RSK	1
Scarborough Nixon Associates	1
Sheffield BRC	2
The Ecology Practice	1
The Environment Partnership Ltd	1
Wardell Armstrong LLP	3
Wharnccliffe Trees and Woodland Consultancy	1
Whitcher Wildlife	1
Wold Ecology	2
YWT	1

Data requests by type of enquirer:-

Type of enquirer	No. of enquiries
Consultancy/Developer	72
Recording group/Individual/YWT	6
Local Authority	1
Researcher/Student/College/Univ	1
Total	80

Data receipt

During the financial year to 31 March 2016 the LRC received data from a number of sources. These included the following contributors:-

Yorkshire Wildlife Trust - Potteric Carr Reserve
Yorkshire Wildlife Trust - Thorpe Marsh Reserve
Yorkshire Naturalists' Union – various individual members
Doncaster Naturalists' Society as a body (and various individual members)
Estrada Ecology (data from bats surveys)
MRB Ecology (data from various surveys)

ECUS (data from bat surveys)
 DMBC staff
 Canal and River Trust
 Access Ecology Ltd
 Natural England
 Amey plc

During this review period an estimated 70% of all our records have come from individuals and natural history groups and 30% from contracted survey work. In the period 1/4/2015 to 31/3/2016 we received very little from ecological consultancies either in the form of reports or of individual biological records, but those who did are listed above and are thanked for their input. Thanks are due to all who contributed records during the year.

Data holdings, data entry and validation

Number of records entered 1/4/15 to 31/3/16 was 13789

Total species data holdings:-

Database	Total no. of species at (31/3/15) 31/3/16	Total no. of records at (31/3/15) 31/3/16
Recorder 6	(11188) 11342	(377884) 391673

Data holdings by taxon group at 31/3/15 – R6 database:-

Taxonomic group	Total no. of records	Total number of records of notable or protected species
Amphibians and Reptiles	2061	2061
Birds	37012	33568
Fish	568	75
Fungi	5163	83
Vascular plants	221308	49290
Coleoptera	37613	2418
Hymenoptera	6229	909
Diptera	17398	770
Lepidoptera	25671	2860
Mammalia	4277	2902
Heteroptera	5346	41
Bryophytes	7916	300
Spiders	3462	0
Smaller insect Orders, other invertebrates and miscellaneous	17600	Not available

During the year the data validation/verification policy document was modified to include a clause on data verification and included in the LRC webpage.

A metadata statement and a table of LRC data holdings have been produced and are included in the LRC webpages. These will be updated periodically.

Database maintenance

The Recorder 6 software was upgraded to version 6.24.0.280 in November 2015. Further dictionary updates have been applied to the database culminating in version “3B” in January 2016. All details of past and latest software and dictionary upgrades/updates may be found on the Recorder 6 website at <http://jncc.defra.gov.uk/recorder>

Technical support for Recorder 6 database

A Recorder 6 support team (two advanced users and one software specialist), continues to provide excellent technical support and advice to Recorder users nationwide via the NBN Forum. Members of this team are currently funded by JNCC, and it is hoped that this funding will continue in 2016/17. (See the note in the Annual report for 2013/2014 regarding future funding of Recorder development and technical support).

Local Wildlife Sites 2015 resurvey programme

Our Local Wildlife Site (LWS) resurvey programmes are an important aspect of the life of the LRC. Data on LWSs need to be kept up to date with contemporary information. To this end we continued with the 2015 LWS resurvey programme which was carried out very competently by MRB Ecology, the survey specialising in botany, and begun in April 2015, running until the end of September 2015. 28 Local Wildlife Sites were resurveyed and results were based on habitat mapping of each site by the surveyor. The surveyor tendered survey results based on habitat type within each LWS boundary, and the survey concentrated on botany for all sites, whilst a few sites were surveyed for invertebrates by a member of LRC staff. The survey results were entered onto the LRC’s Recorder 6 database. Within Recorder 6, Local Wildlife Sites were split into subsites depending on habitat type using standard Phase 1 nomenclature. 3837 records were entered from the survey results. The surveyor also tendered marked-up site maps for our GIS information, as well as target notes and photographs.

Local Wildlife Sites 2016 resurvey programme

This programme will continue our policy of a rolling annual resurvey of Doncaster's Local Wildlife Sites. As in previous years it is proposed that about 30 sites (about 10% of our total) including full Local Wildlife Sites and Candidate Sites will be surveyed or resurveyed. The list of sites has not yet, at the time of writing of this report, been finalised.

ALERC (Association of Local Environmental Records Centres)

The Accreditation Submission Document which the LRC had been working on for some time (see comments in 2014/2015 Annual Report) was tendered to ALERC and their representative visited the LRC in September 2015. Following examination of our procedures and documentation, the LRC was awarded accreditation in October 2015.

Membership of ALERC enables the LRC to call upon technical and procedural assistance and advice, and the organisation represents all member LRCs nationally. Membership is reviewed every five years.

==+=+=+=+=+=+=+=+=+=+=+=

This completes the Annual report for the year 2015/2016. Please see our LRC webpages at

<http://www.doncaster.gov.uk/services/planning/local-record-centre>

for all policy documentation and links to the Biological Request Form.

R J Marsh
Biological Records Officer, Doncaster MBC Local Records Centre,
DMBC – Civic Office,
Waterdale,
Doncaster DN1 3BU

01302-734891
brc@doncaster.gov.uk

31 March 2016