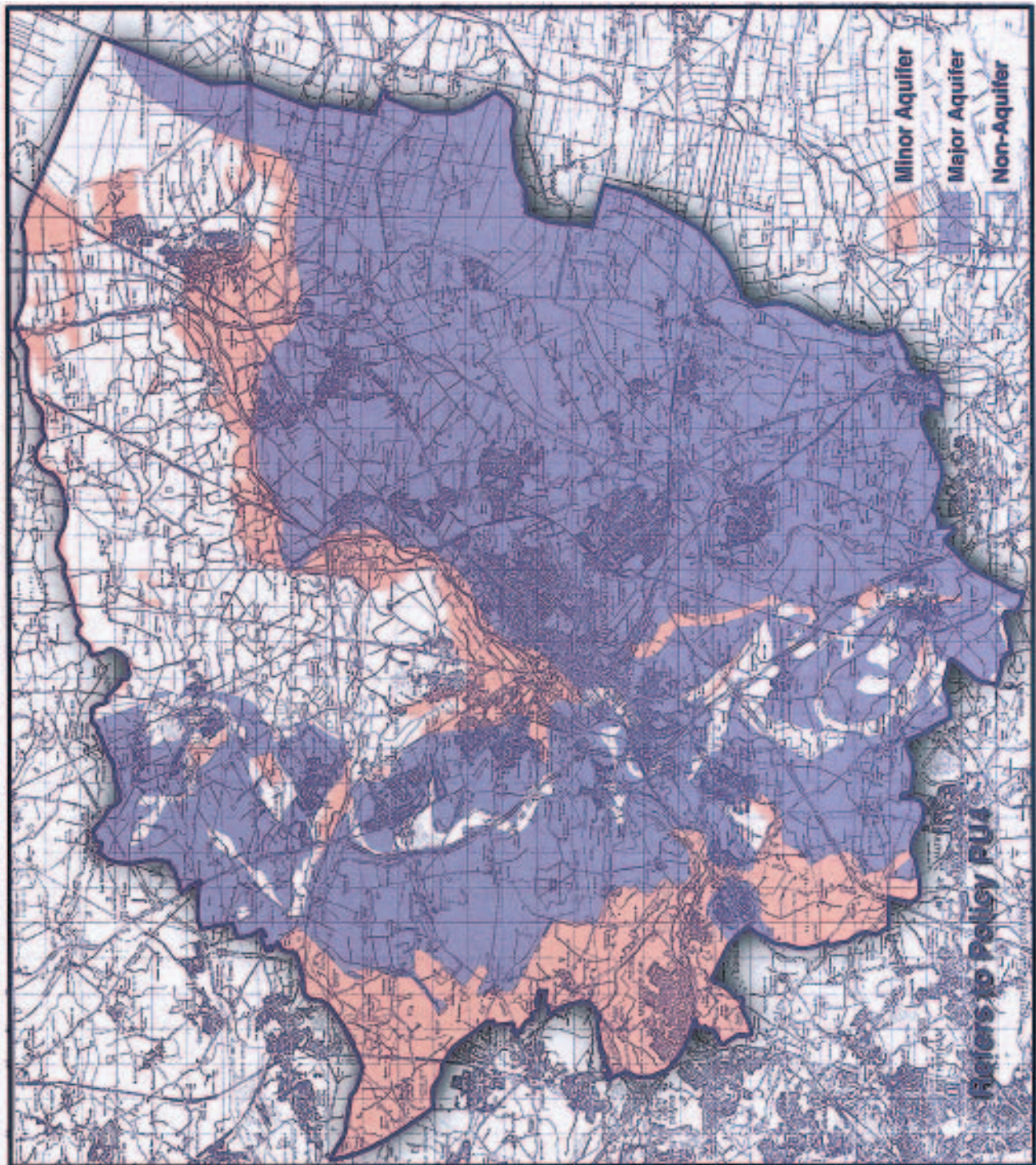


Appendix 14 Public Utilities

APPENDIX 12.1

AREAS OF GROUNDWATER VULNERABILITY



This plan has been prepared using information contained on the Groundwater Vulnerability maps published by the Environment Agency. For further detailed information on groundwater issues, it is advised that contact is made with the Environment Agency at the following address:

*THE ENVIRONMENT AGENCY
Phoenix House,
Global Avenue,
LEEDS LS11 8PG*

